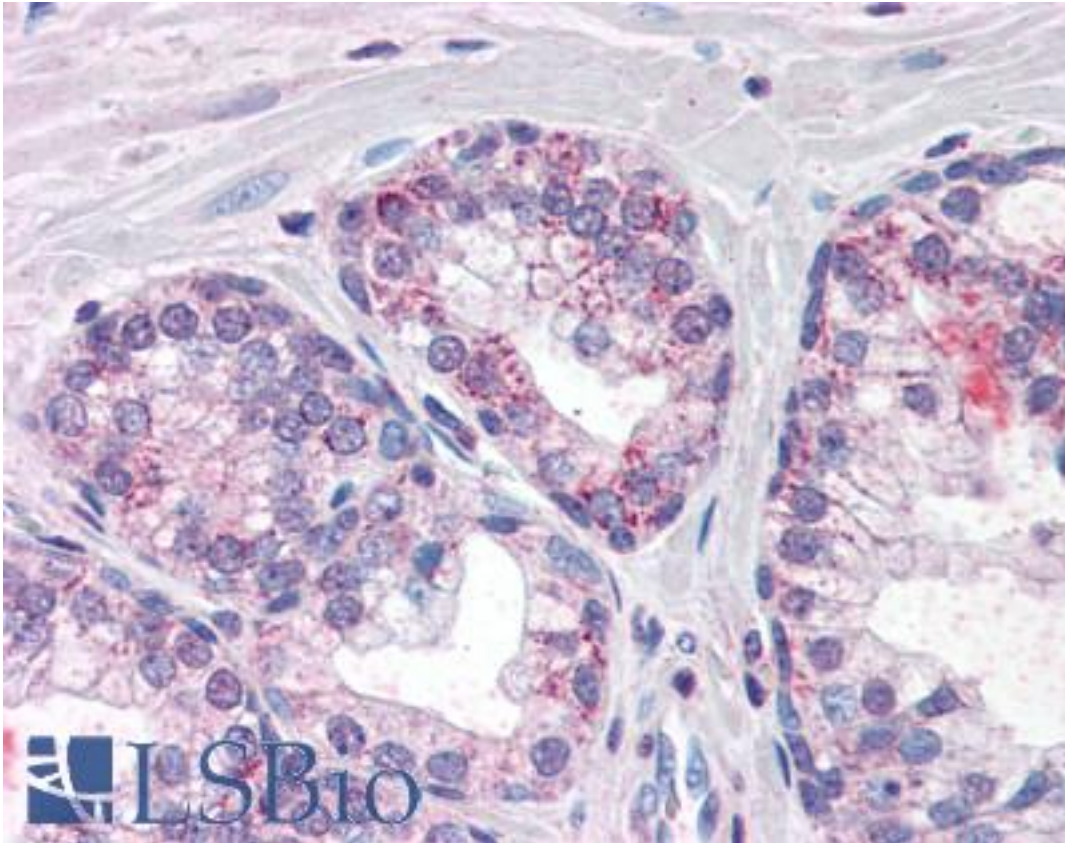


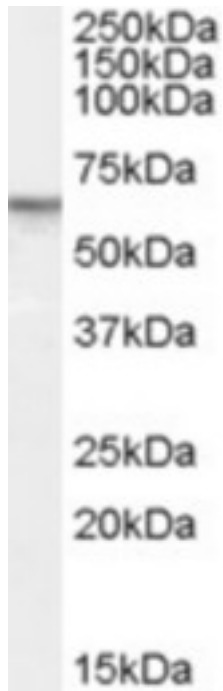
PDE11A Goat anti-Human Polyclonal (Internal) Antibody - LS-B2676 - LSBio	
<b>CatalogID:</b>	LS-B2676
<b>Validation:</b>	This antibody replaces catalog number LS-C55249. It has been validated for use in the following assays: IHC-P.
<b>Target:</b>	phosphodiesterase 11A (PDE11A)
<b>Synonyms:</b>	PDE11A Antibody, Pde11 Antibody, PDE11A4 Antibody, PDE11A1 Antibody, PPNAD2 Antibody, PDE11A2 Antibody, PDE11A3 Antibody, Phosphodiesterase 11A Antibody
<b>Family / Subfamily:</b>	Phosphodiesterase / PDE - cAMP/cGMP dual-specific
<b>Host</b>	PDE11A antibody was produced in Goat
<b>Clonality:</b>	Polyclonal
<b>Immunogen Species:</b>	PDE11A antibody was raised against Human
<b>Antigen Type:</b>	Synthetic peptide
<b>Immunogen:</b>	PDE11A antibody was raised against synthetic peptide C-NSFKESMEKSSYSD from an internal region of human PDE11A (NP_058649.3 ; NP_001070665.1 ; NP_001070826.1 ; NP_001070664.1). Percent identity by BLAST analysis: Human, Gorilla, Gibbon, Monkey, Marmoset, Elephant, Panda, Bovine, Dog, Bat, Pig (100%); Mouse, Rat, Hamster, Horse, Rabbit, Opossum (93%); Xenopus, Stickleback, Pufferfish, Zebrafish (86%).
<b>Specificity:</b>	Human PDE11A. This antibody is expected to recognise all four reported isoforms (NP_058649.3 ; NP_001070665.1 ; NP_001070826.1 ; NP_001070664.1).
<b>Epitope:</b>	Internal
<b>Reactivity:</b>	Human, Gorilla, Gibbon, Monkey, Bat, Bovine, Dog, Pig
<b>Predicted Reactivity:</b>	Mouse, Rat, Hamster, Horse, Rabbit
<b>Purification:</b>	Immunoaffinity purified
<b>Presentation:</b>	Tris-buffered saline, pH 7.3, 0.5% BSA, 0.02% sodium azide
<b>Recommended Storage:</b>	Store at -20°C. Minimize freezing and thawing.
<b>Usage Summary:</b>	Immunohistochemistry: LS-B2676 was validated for use in immunohistochemistry on a panel of 21 formalin-fixed, paraffin-embedded (FFPE) human tissues after heat induced antigen retrieval in pH 6.0 citrate buffer. After incubation with the primary antibody, slides were incubated with biotinylated secondary antibody, followed by alkaline phosphatase-streptavidin and chromogen. The stained slides were evaluated by a pathologist to confirm staining specificity. The optimal working concentration for LS-B2676 was determined to be 10 ug/ml.
<b>Uses:</b>	IHC - Paraffin (10 µg/ml), Western blot (0.5 - 1.5 µg/ml), ELISA (1:2000) (Optimal dilution to be determined by the researcher)
<b>Size:</b>	50 µg
<b>Concentration:</b>	0.5 mg/ml

**Immunohistochemistry Image:**



Anti-PDE11A antibody IHC of human prostate. Immunohistochemistry of formalin-fixed, paraffin-embedded tissue after heat-induced antigen retrieval. Antibody LS-B2676 concentration 10 ug/ml.

**Western Blot Image:**



Antibody (1 ug/ml) staining of Human Prostate lysate (35 ug protein in RIPA buffer). Primary incubation was 1 hour. Detected by chemiluminescence.

**Requested From:**

Japan

Laboratory Reagent For In Vitro Research Use Only

Not for resale without prior written consent from LifeSpan BioSciences, Inc.

Created on 9/23/2014

© 2014 LifeSpan BioSciences