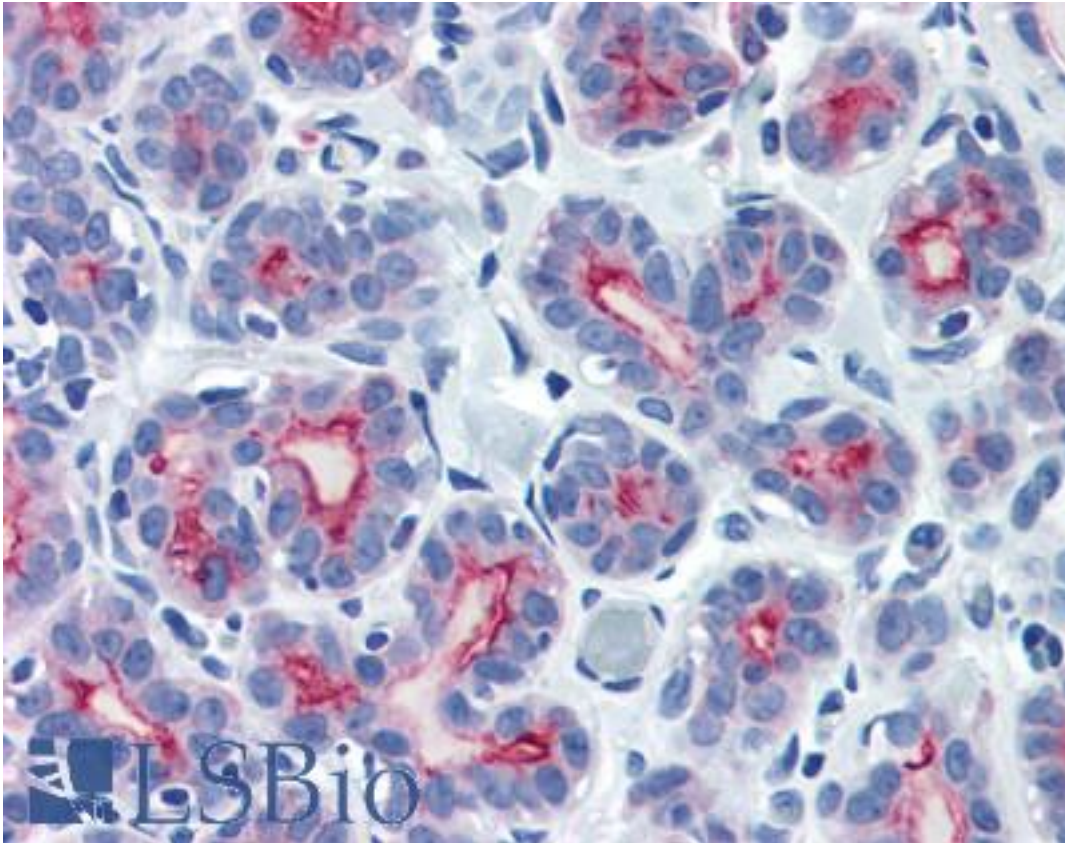


EMA / MUC1 Rabbit anti-Human Polyclonal (C-Terminus) Antibody - LS-B2666 - LSBio	
CatalogID:	LS-B2666
Validation:	This antibody replaces catalog number LS-C83695. It has been validated for use in the following assays: IHC-P.
Target:	mucin 1, cell surface associated (MUC1)
Synonyms:	MUC1 Antibody, CA15-3 Antibody, CD227 Antibody, Carcinoma-associated mucin Antibody, CD227 antigen Antibody, DF3 antigen Antibody, Episialin Antibody, Epithelial membrane antigen Antibody, H23 antigen Antibody, H23AG Antibody, Krebs von den Lungen-6 Antibody, MAM6 Antibody, MUC1/ZD Antibody, MUC-1/SEC Antibody, Mucin-1 Antibody, Pem Antibody, KL-6 Antibody, MUC-1/X Antibody, Tumor-associated mucin Antibody, Peanut-reactive urinary mucin Antibody, Polymorphic epithelial mucin Antibody, PUM Antibody, EMA Antibody, MUC-1 Antibody, Mucin 1, transmembrane Antibody
Family / Subfamily:	Mucin / not assigned-Mucin
Host	MUC1 antibody was produced in Rabbit
Clonality:	Polyclonal
Immunogen Species:	EMA / MUC1 antibody was raised against Human
Immunogen:	EMA / MUC1 antibody was raised against peptide derived from C-terminal sequence of human Mucin-1.
Epitope:	C-Terminus
Reactivity:	Human
Purification:	Purified
Presentation:	20 mM Tris-HCl, pH 8.0, 20 mg/ml BSA, 0.05% sodium azide
Recommended Storage:	Store at -20°C. Aliquot to avoid freeze/thaw cycles.
Usage Summary:	Immunohistochemistry: LS-B2666 was validated for use in immunohistochemistry on a panel of 21 formalin-fixed, paraffin-embedded (FFPE) human tissues after heat induced antigen retrieval in pH 6.0 citrate buffer. After incubation with the primary antibody, slides were incubated with biotinylated secondary antibody, followed by alkaline phosphatase-streptavidin and chromogen. The stained slides were evaluated by a pathologist to confirm staining specificity. The optimal working concentration for LS-B2666 was determined to be 10 ug/ml.
Uses:	IHC - Paraffin (10 µg/ml), IHC - Frozen (1:400 - 1:600) (Optimal dilution to be determined by the researcher)
Size:	50 µl
Concentration:	0.5 mg/ml

Immunohistochemistry Image:



Anti-MUC1 antibody IHC of human breast. Immunohistochemistry of formalin-fixed, paraffin-embedded tissue after heat-induced antigen retrieval. Antibody LS-B2666 concentration 10 ug/ml.

Requested From:

Japan

Laboratory Reagent For In Vitro Research Use Only

Not for resale without prior written consent from LifeSpan BioSciences, Inc.

Created on 9/23/2014

© 2014 LifeSpan BioSciences