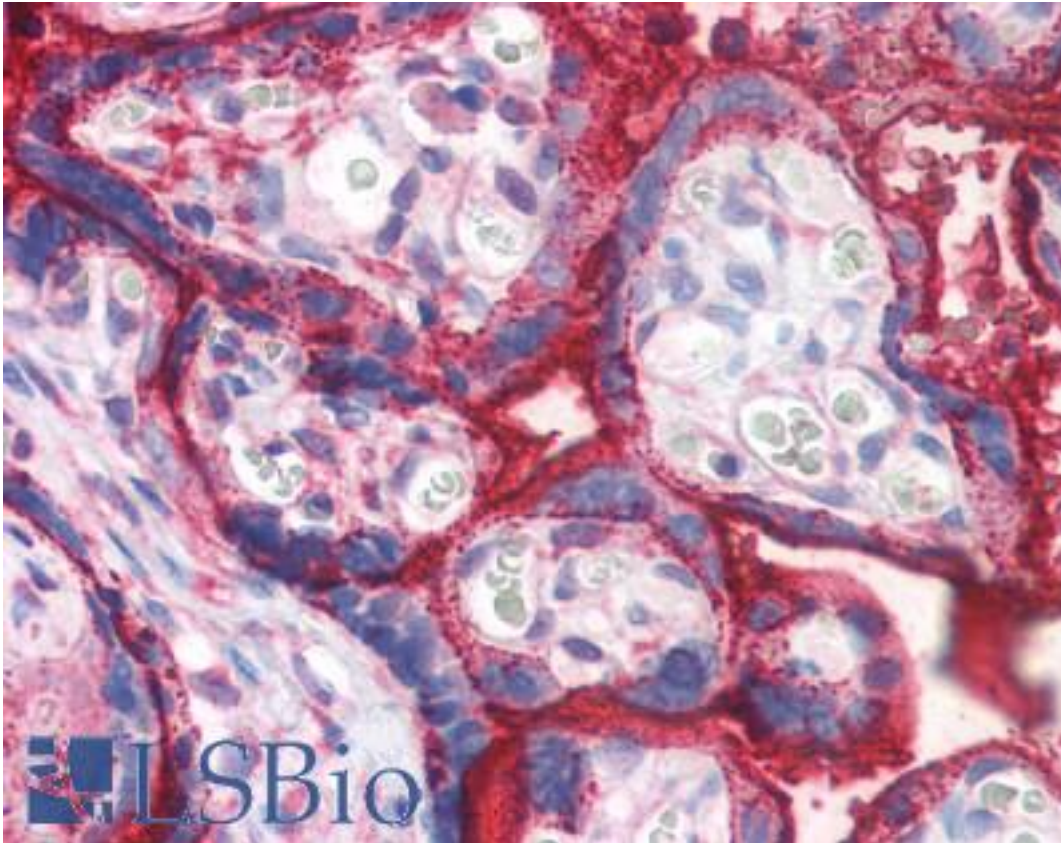


**ALPP / PLAP / ALP Rabbit anti-Human Polyclonal (Internal) Antibody - LS-B2663 - LSBio**

<b>CatalogID:</b>	LS-B2663
<b>Validation:</b>	This antibody replaces catalog number LS-C83694. It has been validated for use in the following assays: IHC-P.
<b>Target:</b>	alkaline phosphatase, placental (ALPP)
<b>Synonyms:</b>	ALPP Antibody, ALP Antibody, Alkaline phosphomonoesterase Antibody, Glycerophosphatase Antibody, PALP Antibody, PLAP Antibody, PLAP-1 Antibody, Alp1 Antibody, Germ-cell alkaline phosphatase Antibody, Nagao isozyme Antibody, Regan isozyme Antibody
<b>Host</b>	ALPP antibody was produced in Rabbit
<b>Clonality:</b>	Polyclonal
<b>Immunogen Species:</b>	ALPP / PLAP / ALP antibody was raised against Human
<b>Immunogen:</b>	ALPP / PLAP / ALP antibody was raised against peptide derived from the middle portion of human PLAP sequence.
<b>Epitope:</b>	Internal
<b>Reactivity:</b>	Human
<b>Purification:</b>	Purified
<b>Presentation:</b>	20 mM Tris-HCl, pH 8.0, 20 mg/ml BSA, 0.05% sodium azide
<b>Recommended Storage:</b>	Store at -20°C. Aliquot to avoid freeze/thaw cycles.
<b>Usage Summary:</b>	Immunohistochemistry: LS-B2663 was validated for use in immunohistochemistry on a panel of 21 formalin-fixed, paraffin-embedded (FFPE) human tissues after heat induced antigen retrieval in pH 6.0 citrate buffer. After incubation with the primary antibody, slides were incubated with biotinylated secondary antibody, followed by alkaline phosphatase-streptavidin and chromogen. The stained slides were evaluated by a pathologist to confirm staining specificity. The optimal working concentration for LS-B2663 was determined to be 10 ug/ml.
<b>Uses:</b>	IHC - Paraffin (10 µg/ml) (Optimal dilution to be determined by the researcher)
<b>Size:</b>	125 µl
<b>Concentration:</b>	0.7 mg/ml

**Immunohistochemistry Image:**



Anti-ALPP antibody IHC of human placenta. Immunohistochemistry of formalin-fixed, paraffin-embedded tissue after heat-induced antigen retrieval. Antibody LS-B2663 concentration 10 ug/ml.

**Requested From:**

Japan

Laboratory Reagent For In Vitro Research Use Only

Not for resale without prior written consent from LifeSpan BioSciences, Inc.

Created on 9/23/2014

© 2014 LifeSpan BioSciences