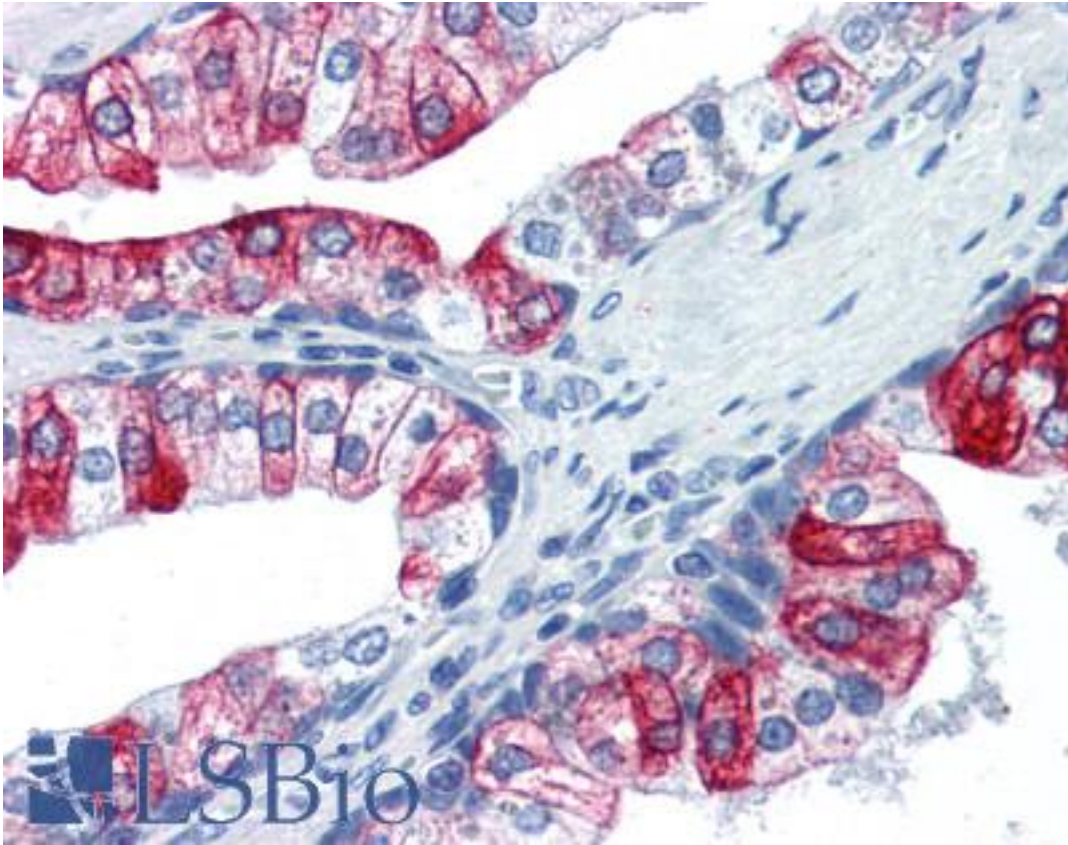


PMEL / SILV / gp100 Rabbit anti-Human Polyclonal (C-Terminus) Antibody - LS-B2662 - LSBio	
CatalogID:	LS-B2662
Validation:	This antibody replaces catalog number LS-C83696. It has been validated for use in the following assays: IHC-P.
Target:	premelanosome protein (PMEL)
Synonyms:	PMEL Antibody, gp100 Antibody, Melanocyte protein PMEL Antibody, Me20m/me20s Antibody, p100 Antibody, PMEL17 Antibody, Premelanosome protein Antibody, SIL Antibody, Silver homolog (mouse) Antibody, Silver, mouse, homolog of Antibody, Silver locus protein homolog Antibody, ME20-M Antibody, Me20-m/me20-s Antibody, ME20M Antibody, Melanocyte protein mel 17 Antibody, Melanocyte protein Pmel 17 Antibody, Silver (mouse homolog) like Antibody, D12S53E Antibody, ME20 Antibody, Melanosomal matrix protein17 Antibody, SILV Antibody
Host	PMEL antibody was produced in Rabbit
Clonality:	Polyclonal
Immunogen Species:	PMEL / SILV / gp100 antibody was raised against Human
Immunogen:	PMEL / SILV / gp100 antibody was raised against peptide derived from C-terminal sequence of human melanosome/gp100.
Epitope:	C-Terminus
Reactivity:	Human
Purification:	Purified
Presentation:	20 mM Tris-HCl, pH 8.0, 20 mg/ml BSA, 0.05% sodium azide
Recommended Storage:	Store at -20°C. Aliquot to avoid freeze/thaw cycles.
Usage Summary:	Immunohistochemistry: LS-B2662 was validated for use in immunohistochemistry on a panel of 21 formalin-fixed, paraffin-embedded (FFPE) human tissues after heat induced antigen retrieval in pH 6.0 citrate buffer. After incubation with the primary antibody, slides were incubated with biotinylated secondary antibody, followed by alkaline phosphatase-streptavidin and chromogen. The stained slides were evaluated by a pathologist to confirm staining specificity. The optimal working concentration for LS-B2662 was determined to be 5 µg/ml.
Uses:	IHC - Paraffin (5 µg/ml) (Optimal dilution to be determined by the researcher)
Size:	100 µl
Concentration:	0.7 mg/ml

Immunohistochemistry Image:



Anti-PMEL / SILV antibody IHC of human prostate. Immunohistochemistry of formalin-fixed, paraffin-embedded tissue after heat-induced antigen retrieval. Antibody LS-B2662 concentration 5 ug/ml.

Requested From:

Japan

Laboratory Reagent For In Vitro Research Use Only

Not for resale without prior written consent from LifeSpan BioSciences, Inc.

Created on 9/23/2014

© 2014 LifeSpan BioSciences