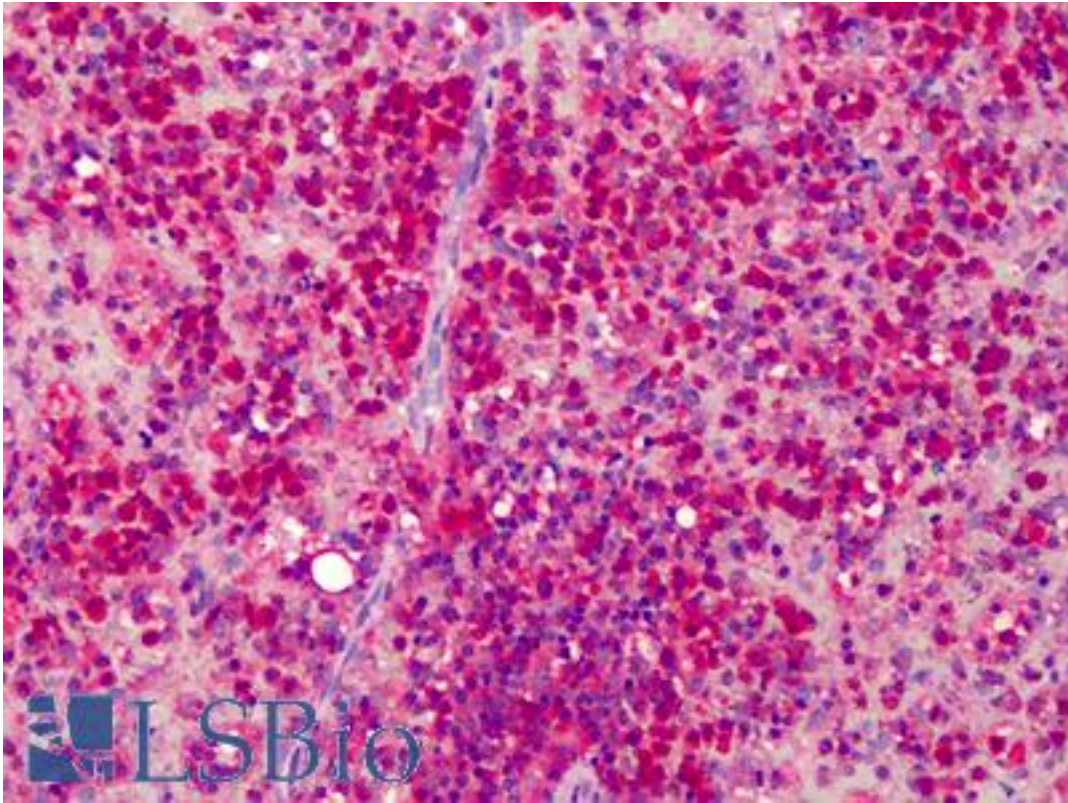


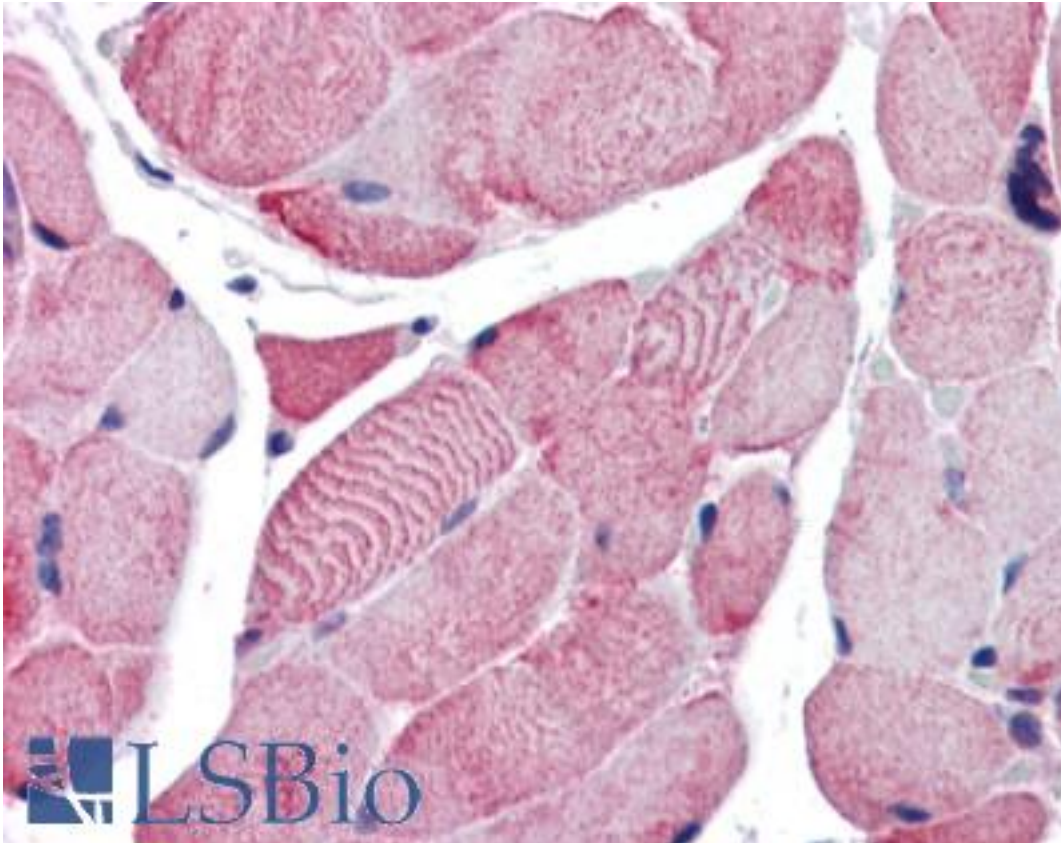
ACTB / Beta Actin Rabbit anti-Human Polyclonal (C-Terminus) Antibody - LS-B2656 - LSBio	
CatalogID:	LS-B2656
Validation:	This antibody replaces catalog number LS-C83660. It has been validated for use in the following assays: IHC-P.
Target:	actin, beta (ACTB)
Synonyms:	ACTB Antibody, Actin, cytoplasmic 1 Antibody, Beta-actin Antibody, Beta actin Antibody, BRWS1 Antibody, Actin, beta Antibody, Beta cytoskeletal actin Antibody, PS1TP5-binding protein 1 Antibody, PS1TP5BP1 Antibody
Host	ACTB antibody was produced in Rabbit
Clonality:	Polyclonal
Immunogen Species:	ACTB / Beta Actin antibody was raised against Human
Immunogen:	ACTB / Beta Actin antibody was raised against peptide derived from C-terminal sequence of human beta-actin.
Epitope:	C-Terminus
Reactivity:	Human
Purification:	Purified
Presentation:	20 mM Tris-HCl, pH 8.0, 20 mg/ml BSA, 0.05% sodium azide
Recommended Storage:	Store at -20°C. Aliquot to avoid freeze/thaw cycles.
Usage Summary:	Immunohistochemistry: LS-B2656 was validated for use in immunohistochemistry on a panel of 21 formalin-fixed, paraffin-embedded (FFPE) human tissues after heat induced antigen retrieval in pH 6.0 citrate buffer. After incubation with the primary antibody, slides were incubated with biotinylated secondary antibody, followed by alkaline phosphatase-streptavidin and chromogen. The stained slides were evaluated by a pathologist to confirm staining specificity. The optimal working concentration for LS-B2656 was determined to be 10 ug/ml.
Uses:	IHC - Paraffin (10 µg/ml) (Optimal dilution to be determined by the researcher)
Size:	50 µl
Concentration:	1.15 mg/ml

Immunohistochemistry Image:



Anti-Beta Actin antibody IHC of human spleen. Immunohistochemistry of formalin-fixed, paraffin-embedded tissue after heat-induced antigen retrieval. Antibody LS-B2656 concentration 10 ug/ml.

Immunohistochemistry Image:



Anti-Beta Actin antibody IHC of human skeletal muscle. Immunohistochemistry of formalin-fixed, paraffin-embedded tissue after heat-induced antigen retrieval. Antibody LS-B2656 concentration 10 ug/ml.

Requested From:

Japan

Laboratory Reagent For In Vitro Research Use Only

Not for resale without prior written consent from LifeSpan BioSciences, Inc.

Created on 9/23/2014

© 2014 LifeSpan BioSciences