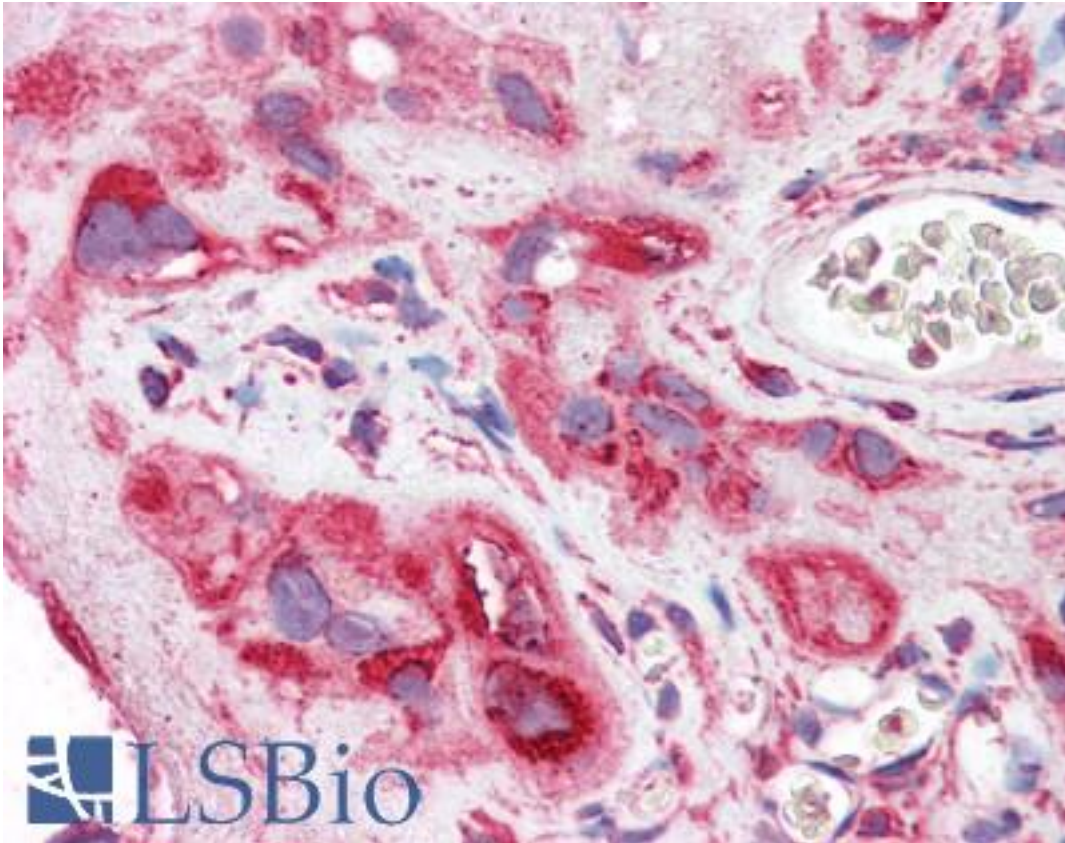


C5AR1 / CD88 / C5a Receptor Mouse anti-Human Monoclonal Antibody - LS-B2653 - LSBio	
<b>CatalogID:</b>	LS-B2653
<b>Validation:</b>	This antibody replaces catalog number LS-C5672. It has been validated for use in the following assays: IHC-P.
<b>Target:</b>	complement component 5a receptor 1 (C5AR1)
<b>Synonyms:</b>	C5AR1 Antibody, C5A Antibody, C5a-R Antibody, C5a ligand Antibody, C5a receptor Antibody, CD88 Antibody, C5a anaphylatoxin receptor Antibody, C5AR Antibody, C5R1 Antibody, CD88 antigen Antibody
<b>Family / Subfamily:</b>	GPCR / Anaphylatoxin
<b>Host</b>	C5AR1 antibody was produced in Mouse
<b>Clonality:</b>	Monoclonal
<b>Isotype:</b>	IgG2a
<b>Immunogen Species:</b>	C5AR1 / CD88 / C5a Receptor antibody was raised against Human
<b>Antigen Type:</b>	Synthetic peptide
<b>Immunogen:</b>	C5AR1 / CD88 / C5a Receptor antibody was raised against c5aR - peptide: Met1 - Asn31.
<b>Specificity:</b>	Recognizes the C5a receptor (C5aR) CD88, which is predominantly expressed on cells of the myeloid lineage. Clone 3H1738 was raised against a synthetic peptide Met1 -Asn31 and has recently been shown to recognize the heptameric peptide (D15DKDTLD21). Clone 3H1738 inhibits C5a binding to its receptor. Species cross-reactivity: Rabbit.
<b>Reactivity:</b>	Human, Rabbit
<b>Purification:</b>	Ion exchange chromatography
<b>Presentation:</b>	PBS, pH 7.4, 40% glycerol. No preservative added.
<b>Recommended Storage:</b>	Long term: -20°C; Short term: +4°C. Avoid repeat freeze-thaw cycles.
<b>Usage Summary:</b>	Immunohistochemistry: LS-B2653 was validated for use in immunohistochemistry on a panel of 21 formalin-fixed, paraffin-embedded (FFPE) human tissues after heat induced antigen retrieval in pH 6.0 citrate buffer. After incubation with the primary antibody, slides were incubated with biotinylated secondary antibody, followed by alkaline phosphatase-streptavidin and chromogen. The stained slides were evaluated by a pathologist to confirm staining specificity. The optimal working concentration for LS-B2653 was determined to be 10 ug/ml. Flow Cytometry: 1:50. Use 20 ul to label 5x10 <sup>5</sup> cells in 100 ul.
<b>Uses:</b>	IHC - Paraffin (10 µg/ml), Flow Cytometry (1:50), Functional Assay, Neutralization (Optimal dilution to be determined by the researcher)
<b>Size:</b>	50 µg
<b>Concentration:</b>	0.5 mg/ml

**Immunohistochemistry Image:**



Anti-C5AR1 / CD88 antibody IHC of human placenta. Immunohistochemistry of formalin-fixed, paraffin-embedded tissue after heat-induced antigen retrieval. Antibody LS-B2653 concentration 10 ug/ml.

**Requested From:**

Japan

Laboratory Reagent For In Vitro Research Use Only

Not for resale without prior written consent from LifeSpan BioSciences, Inc.

Created on 9/23/2014

© 2014 LifeSpan BioSciences