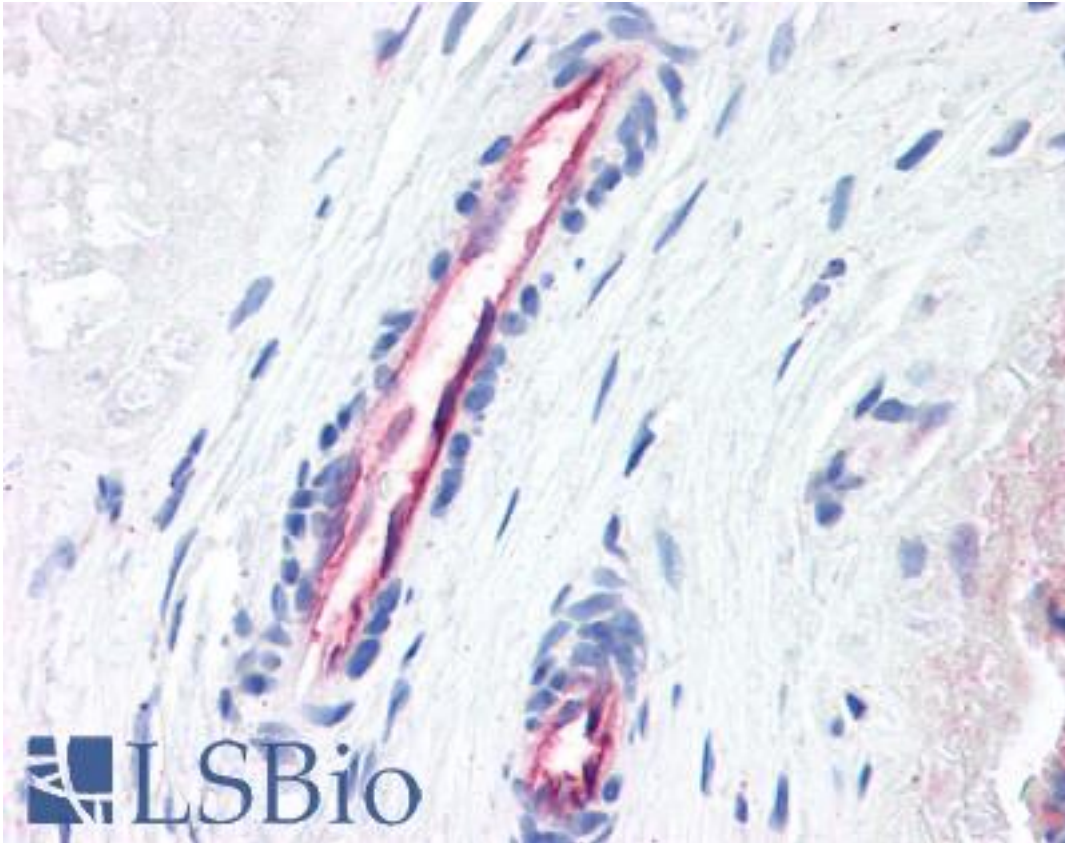


F2R / Thrombin Receptor / PAR1 Mouse anti-Human Monoclonal (N-Terminus) (ATAP2) Antibody - LS-B2651 - LSBio	
CatalogID:	LS-B2651
Validation:	This antibody replaces catalog number LS-C38062. It has been validated for use in the following assays: IHC-P.
Target:	coagulation factor II (thrombin) receptor (F2R)
Synonyms:	F2R Antibody, CF2R Antibody, Coagulation factor II receptor Antibody, PAR1 Antibody, PAR-1 Antibody, Thrombin receptor Antibody, TR Antibody, HTR Antibody, Protease-activated receptor 1 Antibody
Family / Subfamily:	GPCR / Proteinase-activated
Host	F2R antibody was produced in Mouse
Clonality:	Monoclonal
Isotype:	IgG1
Clone Name:	ATAP2
Immunogen Species:	F2R / Thrombin Receptor / PAR1 antibody was raised against Human
Antigen Type:	Synthetic peptide
Immunogen:	F2R / Thrombin Receptor / PAR1 antibody was raised against a synthetic peptide corresponding to the N-terminal region of the human thrombin receptor PAR1.
Specificity:	Recognizes the cleaved and intact forms of human thrombin receptor PAR1, N-terminus. Does not cross-react with PAR2.
Epitope:	N-Terminus
Reactivity:	Human
Purification:	Protein A purified
Presentation:	PBS, pH 7.4, 0.1% sodium azide
Recommended Storage:	Long term: -20°C; Short term: +4°C. Avoid repeat freeze-thaw cycles.
Usage Summary:	Immunohistochemistry: LS-B2651 was validated for use in immunohistochemistry on a panel of 21 formalin-fixed, paraffin-embedded (FFPE) human tissues after heat induced antigen retrieval in pH 6.0 citrate buffer. After incubation with the primary antibody, slides were incubated with biotinylated secondary antibody, followed by alkaline phosphatase-streptavidin and chromogen. The stained slides were evaluated by a pathologist to confirm staining specificity. The optimal working concentration for LS-B2651 was determined to be 10 ug/ml. Immunofluorescence (Methanol or acetone fixed CHRF cells): 1-3 ug/ml. Flow Cytometry (Methanol or acetone fixed CHRF cells): 10-20 ug/ml. ELISA: 0.1-1.0 ug/ml.
Uses:	IHC - Paraffin (10 ug/ml), Immunofluorescence (1 - 3 ug/ml), Flow Cytometry (10 - 20 ug/ml), ELISA (0.1 - 1 ug/ml) (Optimal dilution to be determined by the researcher)
Uses Not Recommended:	Western blot
Size:	50 ug
Concentration:	0.5 mg/ml

Immunohistochemistry Image:



Anti-Thrombin Receptor antibody IHC of human placenta, vessels. Immunohistochemistry of formalin-fixed, paraffin-embedded tissue after heat-induced antigen retrieval. Antibody LS-B2651 concentration 10 ug/ml.

Requested From:

Japan

Laboratory Reagent For In Vitro Research Use Only

Not for resale without prior written consent from LifeSpan BioSciences, Inc.

Created on 9/23/2014

© 2014 LifeSpan BioSciences