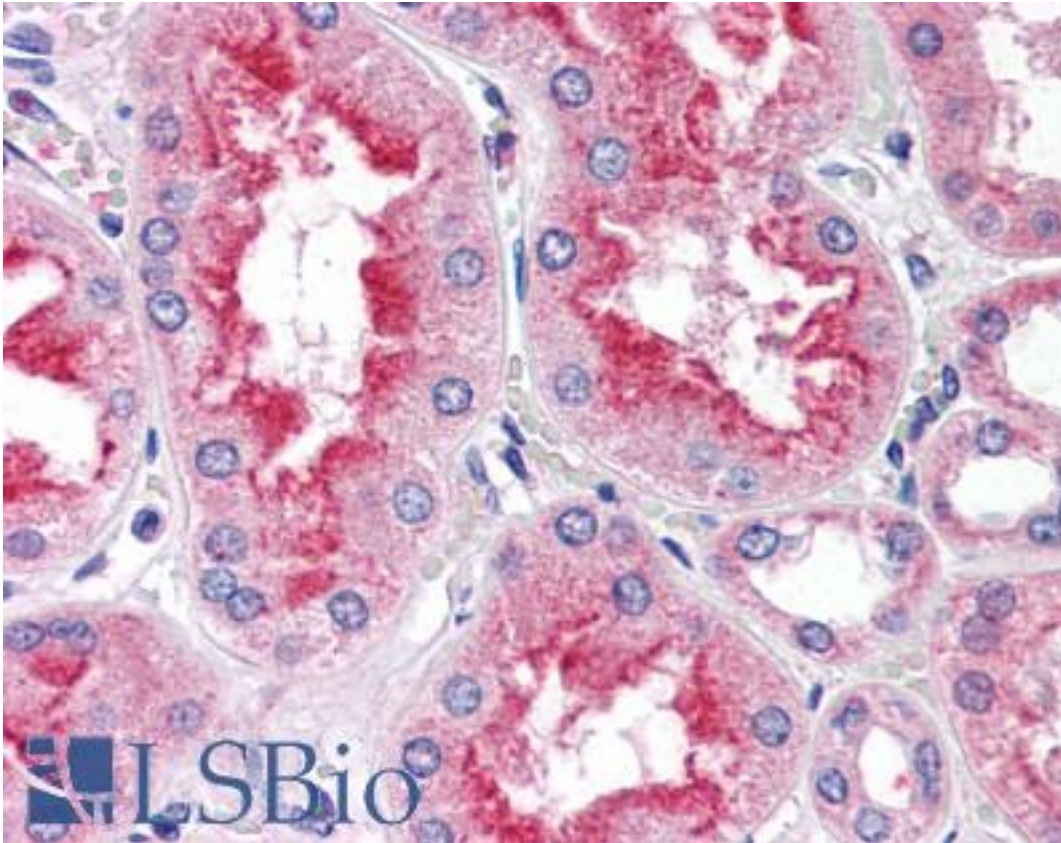


SMAD9 Goat anti-Human Polyclonal (Internal) Antibody - LS-B2646 - LSBio	
<b>CatalogID:</b>	LS-B2646
<b>Validation:</b>	This antibody replaces catalog number LS-C55483. It has been validated for use in the following assays: IHC-P.
<b>Target:</b>	SMAD family member 9 (SMAD9)
<b>Synonyms:</b>	SMAD9 Antibody, MAD homolog 9 Antibody, SMAD 9 Antibody, SMAD8A Antibody, SMAD8 Antibody, Smad9 Antibody, MADH9 Antibody, SMAD8B Antibody, MADH6 Antibody, Mothers against DPP homolog 9 Antibody, SMAD family member 9 Antibody
<b>Host</b>	SMAD9 antibody was produced in Goat
<b>Clonality:</b>	Polyclonal
<b>Immunogen Species:</b>	SMAD9 antibody was raised against Human
<b>Antigen Type:</b>	Synthetic peptide
<b>Immunogen:</b>	SMAD9 antibody was raised against synthetic peptide C-HSEPLMPHNATYPD from an internal region of human SMAD9 (NP_005896.1). Percent identity by BLAST analysis: Human, Gorilla, Gibbon, Monkey, Mouse, Rat, Hamster, Elephant, Panda, Bovine, Dog, Bat, Horse, Rabbit, Pig, Turkey, Chicken (100%); Opossum, Platypus, Lizard (93%); Stickleback (86%).
<b>Specificity:</b>	Human SMAD9. This antibody is not expected to cross-react with SMAD1 and SMAD5.
<b>Epitope:</b>	Internal
<b>Reactivity:</b>	Human, Gorilla, Gibbon, Monkey, Mouse, Rat, Bat, Bovine, Dog, Hamster, Horse, Pig, Rabbit, Chicken
<b>Purification:</b>	Immunoaffinity purified
<b>Presentation:</b>	Tris-buffered saline, pH 7.3, 0.5% BSA, 0.02% sodium azide
<b>Recommended Storage:</b>	Store at -20°C. Minimize freezing and thawing.
<b>Usage Summary:</b>	Immunohistochemistry: LS-B2646 was validated for use in immunohistochemistry on a panel of 21 formalin-fixed, paraffin-embedded (FFPE) human tissues after heat induced antigen retrieval in pH 6.0 citrate buffer. After incubation with the primary antibody, slides were incubated with biotinylated secondary antibody, followed by alkaline phosphatase-streptavidin and chromogen. The stained slides were evaluated by a pathologist to confirm staining specificity. The optimal working concentration for LS-B2646 was determined to be 5 ug/ml.
<b>Uses:</b>	IHC - Paraffin (5 µg/ml), Western blot (0.3 - 1 µg/ml), ELISA (1:64000) (Optimal dilution to be determined by the researcher)
<b>Size:</b>	50 µg
<b>Concentration:</b>	0.5 mg/ml

**Immunohistochemistry Image:**



Anti-SMAD9 antibody IHC of human kidney. Immunohistochemistry of formalin-fixed, paraffin-embedded tissue after heat-induced antigen retrieval. Antibody LS-B2646 concentration 5 ug/ml.

**Western Blot Image:**



Antibody (0.3 ug/ml) staining of Human Skin lysate (35 ug protein in RIPA buffer). Primary incubation was 1 hour. Detected by chemiluminescence.

<b>Requested From:</b>	Japan
Laboratory Reagent For In Vitro Research Use Only	
Not for resale without prior written consent from LifeSpan BioSciences, Inc.	
Created on 9/23/2014	
© 2014 LifeSpan BioSciences	