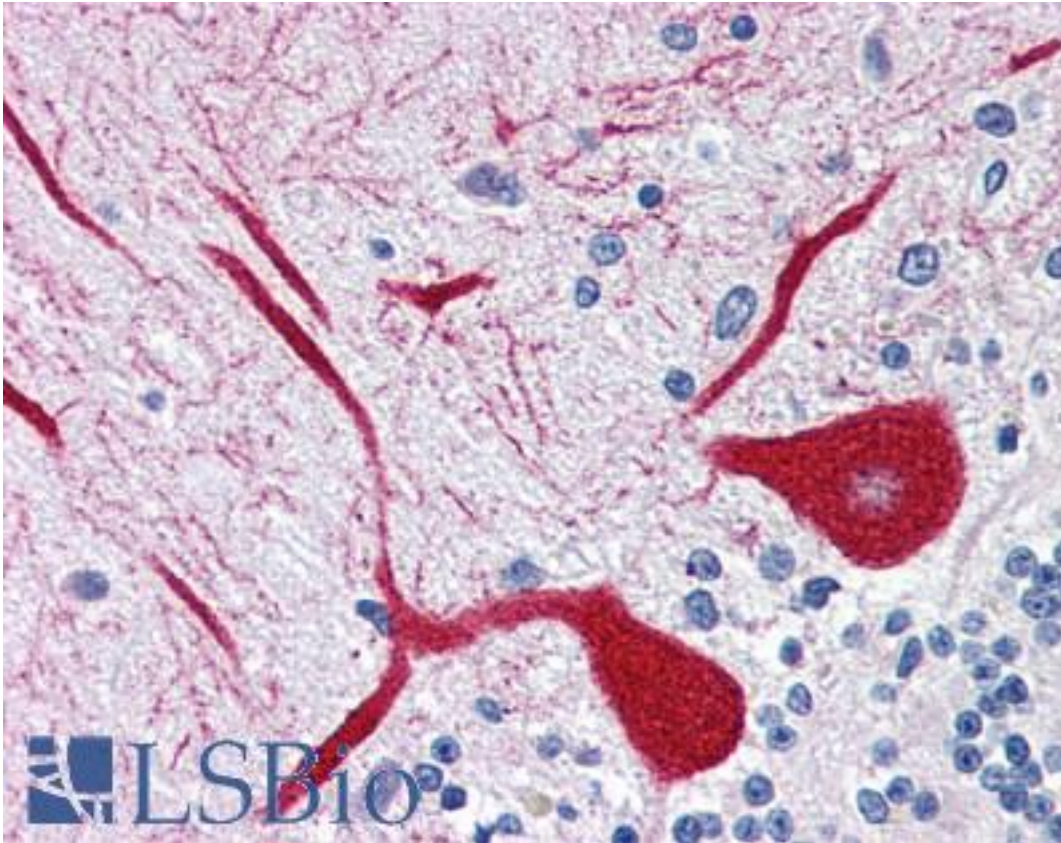


IP3R1 / IP3R Rabbit anti-Human Polyclonal (aa1892-1911) Antibody - LS-B2640 - LSBio	
CatalogID:	LS-B2640
Validation:	This antibody replaces catalog number LS-C8244. It has been validated for use in the following assays: IHC-P.
Target:	inositol 1,4,5-trisphosphate receptor, type 1 (ITPR1)
Synonyms:	ITPR1 Antibody, InsP3R-I Antibody, IP3R1 Antibody, InsP3R Antibody, InsP3R type I Antibody, INSP3R1 Antibody, IP3R Antibody, Opisthotonus Antibody, Pcp1 Antibody, IP3 receptor Antibody, IP3 receptor isoform 1 Antibody, SCA15 Antibody, Spinocerebellar ataxia 15 Antibody, Spinocerebellar ataxia 16 Antibody, I145TR Antibody, IP3R 1 Antibody, SCA16 Antibody, Type 1 InsP3 receptor Antibody
Family / Subfamily:	Ion Channel / Inositol 1,4,5-triphosphate receptor
Host	ITPR1 antibody was produced in Rabbit
Clonality:	Polyclonal
Isotype:	IgG
Immunogen Species:	IP3R1 / IP3R antibody was raised against Human
Antigen Type:	Synthetic peptide
Immunogen:	IP3R1 / IP3R antibody was raised against synthetic peptide corresponding to aa 1892-1911 (N1892KKKKDDEVDRDAPSRKKAKE1911) of the cytoplasmic C-terminal domain of human IP3R-I (inositol 1,4,5-triphosphate receptor (type-I)). Percent identity by BLAST analysis: Human, Gorilla, Gibbon, Monkey, Marmoset, Mouse, Rat, Bovine (100%); Hamster, Elephant, Panda, Horse (95%); Opossum (85%).
Specificity:	Recognizes human IP3R-I. Detects a band of ~240kD by Western Blot. Species cross-reactivity: mouse, rat and canine.
Epitope:	aa1892-1911
Reactivity:	Human, Gorilla, Gibbon, Monkey, Mouse, Rat, Bovine
Predicted Reactivity:	Hamster, Horse
Purification:	Affinity purified
Presentation:	PBS, 1 mg/ml BSA, 0.05% sodium azide.
Recommended Storage:	+4°C or -20°C, Avoid repeated freezing and thawing.
Usage Summary:	Immunohistochemistry: LS-B2640 was validated for use in immunohistochemistry on a panel of 21 formalin-fixed, paraffin-embedded (FFPE) human tissues after heat induced antigen retrieval in pH 6.0 citrate buffer. After incubation with the primary antibody, slides were incubated with biotinylated secondary antibody, followed by alkaline phosphatase-streptavidin and chromogen. The stained slides were evaluated by a pathologist to confirm staining specificity. The optimal working concentration for LS-B2640 was determined to be 5 µg/ml.
Uses:	IHC - Paraffin (5 µg/ml), IHC - Frozen (1:125), ICC, Western blot (1:500), Immunoprecipitation (Optimal dilution to be determined by the researcher)
Size:	50 µl
Concentration:	1.3 mg/ml

Immunohistochemistry Image:



Anti-ITPR1 antibody IHC of human brain, cerebellum. Immunohistochemistry of formalin-fixed, paraffin-embedded tissue after heat-induced antigen retrieval. Antibody LS-B2640 concentration 5 ug/ml.

Requested From:

Japan

Laboratory Reagent For In Vitro Research Use Only

Not for resale without prior written consent from LifeSpan BioSciences, Inc.

Created on 9/23/2014

© 2014 LifeSpan BioSciences