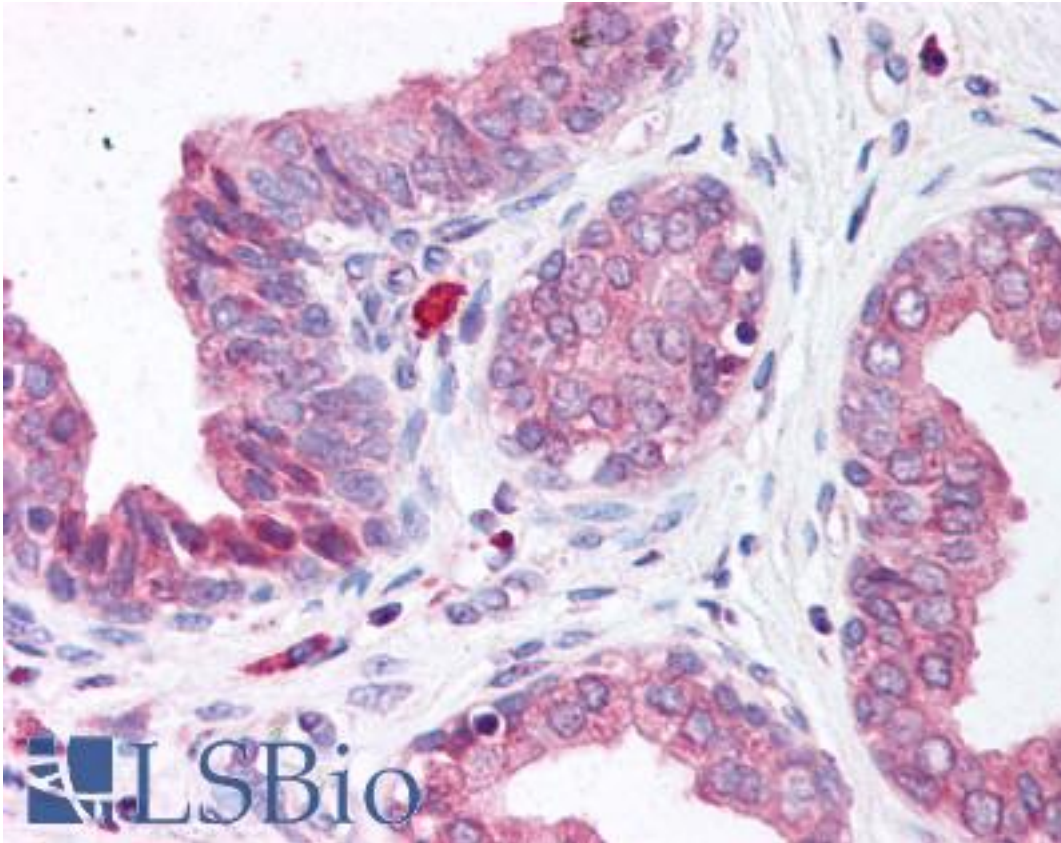


NUDT1 / MTH1 Rabbit anti-Human Polyclonal (C-Terminus) Antibody - LS-B264 - LSBio	
<b>CatalogID:</b>	LS-B264
<b>Validation:</b>	This antibody replaces catalog number LS-C2713. It has been validated for use in the following assays: IHC.
<b>Target:</b>	nudix (nucleoside diphosphate linked moiety X)-type motif 1 (NUDT1)
<b>Synonyms:</b>	NUDT1 Antibody, 8-oxo-dGTPase Antibody, 2-hydroxy-dATP diphosphatase Antibody, MutT human homolog 1 Antibody, Nudix motif 1 Antibody, MTH1 Antibody
<b>Host</b>	NUDT1 antibody was produced in Rabbit
<b>Clonality:</b>	Polyclonal
<b>Immunogen Species:</b>	NUDT1 / MTH1 antibody was raised against Human
<b>Immunogen:</b>	NUDT1 / MTH1 antibody was raised against a c-terminal peptide derived from the human MTH1 conjugated to KLH. Percent identity by BLAST analysis: Mouse, Rat (91%).
<b>Specificity:</b>	NB100-109 is specific for MTH1.
<b>Epitope:</b>	C-Terminus
<b>Reactivity:</b>	Human
<b>Predicted Reactivity:</b>	Mouse, Rat
<b>Purification:</b>	Immunoaffinity purified
<b>Presentation:</b>	PBS, 0.05% sodium azide.
<b>Recommended Storage:</b>	+4°C or -20°C, Avoid repeated freezing and thawing.
<b>Usage Summary:</b>	Immunohistochemistry: LS-B264 was validated for use in immunohistochemistry on a panel of 21 formalin-fixed, paraffin-embedded (FFPE) human tissues after heat induced antigen retrieval in pH 6.0 citrate buffer. After incubation with the primary antibody, slides were incubated with biotinylated secondary antibody, followed by alkaline phosphatase-streptavidin and chromogen. The stained slides were evaluated by a pathologist to confirm staining specificity. The optimal working concentration for LS-B264 was determined to be 5 ug/ml.
<b>Uses:</b>	IHC - Paraffin (5 µg/ml), IHC - Frozen, Western blot (1:500), Immunoprecipitation (Optimal dilution to be determined by the researcher)
<b>Size:</b>	50 µl

**Immunohistochemistry Image:**



Anti-NUDT1 / MTH1 antibody IHC of human prostate. Immunohistochemistry of formalin-fixed, paraffin-embedded tissue after heat-induced antigen retrieval. Antibody LS-B264 concentration 5 ug/ml.

**Requested From:**

Japan

Laboratory Reagent For In Vitro Research Use Only

Not for resale without prior written consent from LifeSpan BioSciences, Inc.

Created on 9/23/2014

© 2014 LifeSpan BioSciences