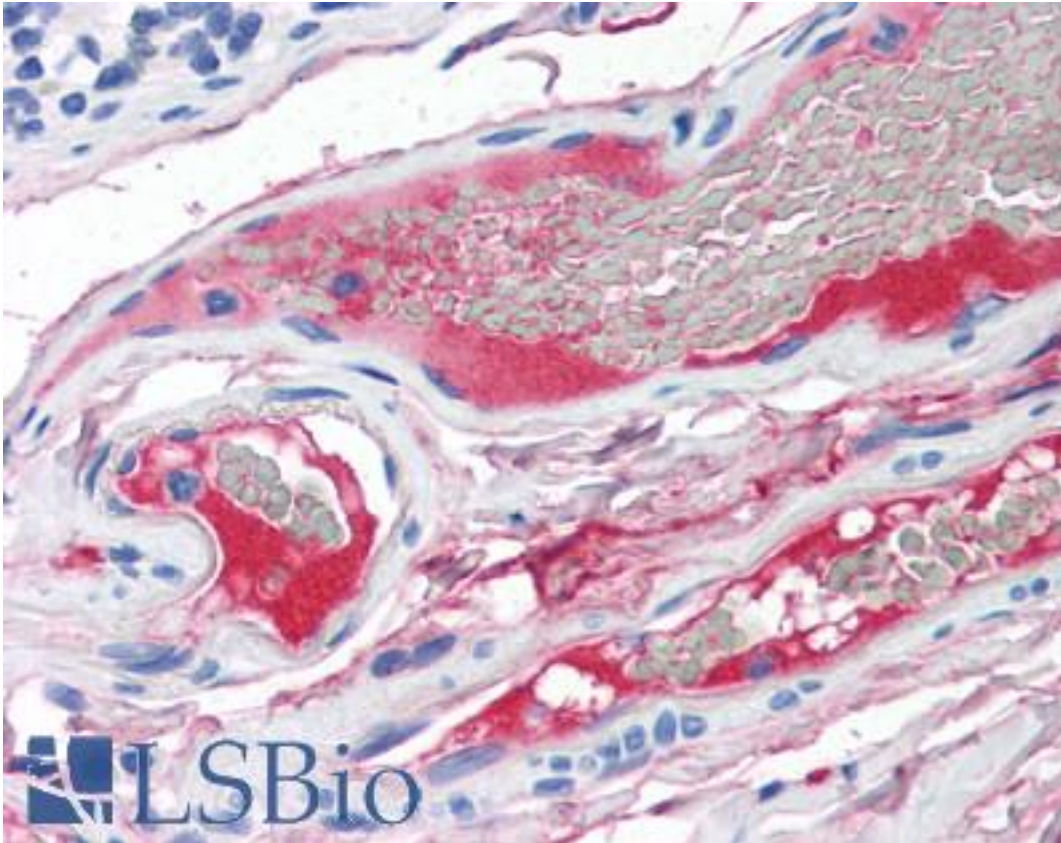


Complement C2 Mouse anti-Human Monoclonal Antibody - LS-B2639 - LSBio	
CatalogID:	LS-B2639
Validation:	This antibody replaces catalog number LS-C22279. It has been validated for use in the following assays: IHC-P.
Target:	complement component 2 (C2)
Synonyms:	C2 Antibody, C2b Antibody, C3/C5 convertase Antibody, Complement component C2 Antibody, Complement C2 Antibody, Complement component 2 Antibody, CO2 Antibody
Family / Subfamily:	Protease / Serine S1
Host	C2 antibody was produced in Mouse
Clonality:	Monoclonal
Isotype:	IgG1,k
Immunogen Species:	Complement C2 antibody was raised against Human
Antigen Type:	Purified protein
Immunogen:	Complement C2 antibody was raised against complement component C2 isolated from human plasma.
Specificity:	Recognizes C2 from human plasma/serum. Epitope specificity differs from that of LS-C22277 and LS-C22278 as determined by inhibition ELISA. Reacts strongly with C2. Strong reaction is seen with human serum/plasma and no reaction is seen with serum from patients deficient in C2, when tested in sandwich ELISA with a polyclonal antibody against C2. In ELISA, reaction is also seen with C2 directly coated onto the microtiter well.
Reactivity:	Human
Purification:	Protein A/G purified
Presentation:	PBS, pH 7.4, 15 mM sodium azide
Recommended Storage:	+4°C or -20°C, Avoid repeated freezing and thawing.
Usage Summary:	Immunohistochemistry: LS-B2639 was validated for use in immunohistochemistry on a panel of 21 formalin-fixed, paraffin-embedded (FFPE) human tissues after heat induced antigen retrieval in pH 6.0 citrate buffer. After incubation with the primary antibody, slides were incubated with biotinylated secondary antibody, followed by alkaline phosphatase-streptavidin and chromogen. The stained slides were evaluated by a pathologist to confirm staining specificity. The optimal working concentration for LS-B2639 was determined to be 10 ug/ml. Western Blot: After SDS-PAGE, this antibody reacts with C2 and a subfraction of C2 believed to be C2b, both under reducing and non-reducing conditions.
Uses:	IHC - Paraffin (10 µg/ml), Western blot (1:125), ELISA (1:2000) (Optimal dilution to be determined by the researcher)
Size:	50 µl
Concentration:	1 mg/ml

Immunohistochemistry Image:



Anti-C2 / Complement C2 antibody IHC of human small intestine, vessels.
Immunohistochemistry of formalin-fixed, paraffin-embedded tissue after heat-induced antigen retrieval. Antibody LS-B2639 concentration 10 ug/ml.

Requested From:

Japan

Laboratory Reagent For In Vitro Research Use Only

Not for resale without prior written consent from LifeSpan BioSciences, Inc.

Created on 9/23/2014

© 2014 LifeSpan BioSciences