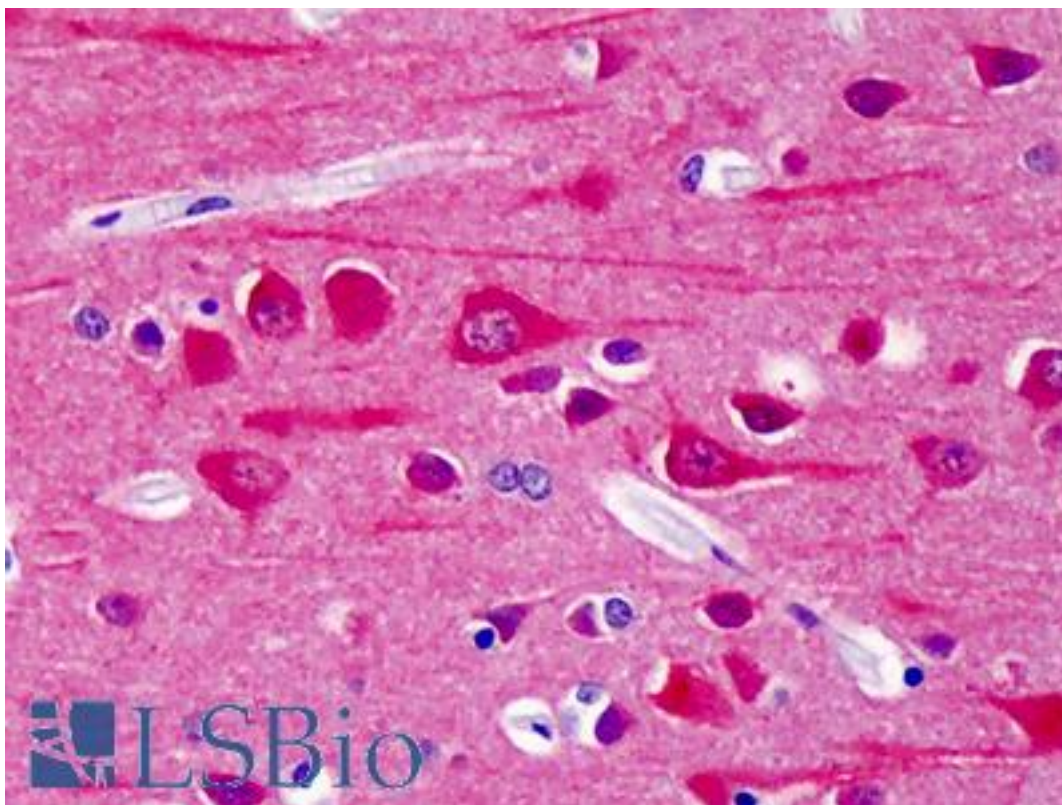


CAMK2 / CAMKII Rabbit anti-Rat Polyclonal (pThr286) Antibody - LS-B2637 - LSBio

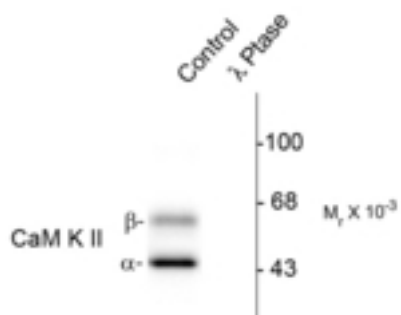
CatalogID:	LS-B2637
Validation:	This antibody replaces catalog number LS-C246. It has been validated for use in the following assays: IHC-P.
Target:	Calcium/Calmodulin-dependent Protein Kinase Type II (CAMK2)
Host	Calcium/Calmodulin-dependent Protein Kinase Type II (CAMK2) antibody was produced in Rabbit
Clonality:	Polyclonal
Immunogen Species:	CAMK2 / CAMKII antibody was raised against Rat
Immunogen:	CAMK2 / CAMKII antibody was raised against phosphopeptide corresponding to amino acid residues surrounding the phosphoThr286 found in rat brain CaM Kinase II.
Specificity:	Specific for the ~50k a-CaM Kinase II and the ~60k R-CaM Kinase II proteins phosphorylated at Thr286. Immunolabeling is blocked by the X-phosphatase treatment
Epitope:	pThr286
Reactivity:	Rat, Human, Mouse, Xenopus
Purification:	Immunoaffinity purified
Presentation:	10 mM HEPES (pH 7.5), 150 mM NaCl, 100 ug per ml BSA, 50% glycerol
Recommended Storage:	+4°C or -20°C, Avoid repeated freezing and thawing.
Usage Summary:	Immunohistochemistry: LS-B2637 was validated for use in immunohistochemistry on a panel of 21 formalin-fixed, paraffin-embedded (FFPE) human tissues after heat induced antigen retrieval in pH 6.0 citrate buffer. After incubation with the primary antibody, slides were incubated with biotinylated secondary antibody, followed by alkaline phosphatase-streptavidin and chromogen. The stained slides were evaluated by a pathologist to confirm staining specificity. The optimal working concentration for LS-B2637 was determined to be 1:200.
Uses:	IHC - Paraffin (1:200), Western blot (1:1000) (Optimal dilution to be determined by the researcher)
Size:	50 µl

Immunohistochemistry Image:



Anti-CAMK2 antibody IHC of human brain, cortex. Immunohistochemistry of formalin-fixed, paraffin-embedded tissue after heat-induced antigen retrieval. Antibody LS-B2637 dilution 1:200.

Western Blot Image:



Western blot of rat brain lysate showing specific immunolabeling of the ~50k α- and the ~60k β-CaM Kinase II phosphorylated at Thr286 (Control). The phosphospecificity of this labeling is shown in the second lane (lambda-phosphatase: I-Ptase). The blot is identical to the control except that it was incubated in I-Ptase (1200 units for 30 min) before being exposed to the Anti-Thr286 CaM Kinase II. The immunolabeling is completely eliminated by treatment with I-Ptase.

Laboratory Reagent For In Vitro Research Use Only

Not for resale without prior written consent from LifeSpan BioSciences, Inc.

Created on 9/23/2014

© 2014 LifeSpan BioSciences