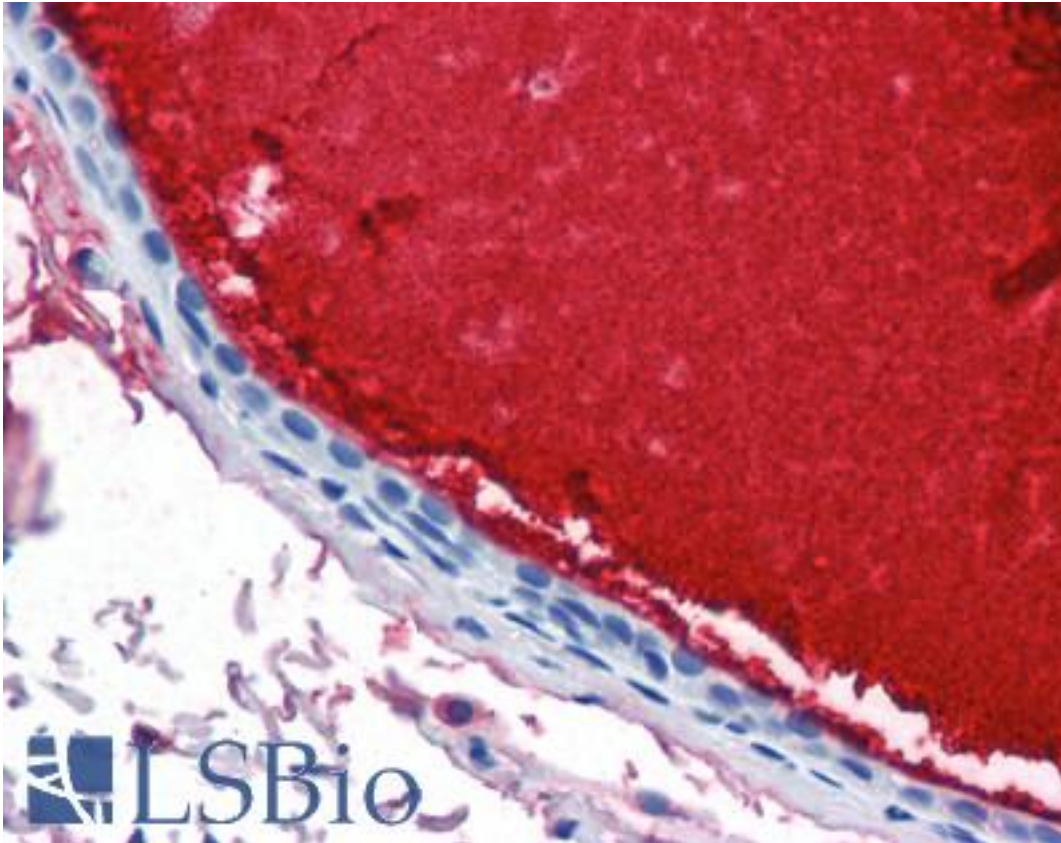


LF / LTF / Lactoferrin Mouse anti-Human Monoclonal (1A1) Antibody - LS-B2636 - LSBio	
<b>CatalogID:</b>	LS-B2636
<b>Validation:</b>	This antibody replaces catalog number LS-C58300. It has been validated for use in the following assays: IHC-P.
<b>Target:</b>	lactotransferrin (LTF)
<b>Synonyms:</b>	LTF Antibody, GIG12 Antibody, Growth-inhibiting protein 12 Antibody, HLF2 Antibody, Lactotransferrin Antibody, Lactoferrin Antibody, LF Antibody, Neutrophil lactoferrin Antibody, Talalactoferrin Antibody
<b>Host</b>	LTF antibody was produced in Mouse
<b>Clonality:</b>	Monoclonal
<b>Isotype:</b>	IgG1
<b>Clone Name:</b>	1A1
<b>Immunogen Species:</b>	LF / LTF / Lactoferrin antibody was raised against Human
<b>Antigen Type:</b>	Purified protein
<b>Immunogen:</b>	LF / LTF / Lactoferrin antibody was raised against purified lactoferrin from human milk.
<b>Specificity:</b>	Recognizes human lactoferrin, a 78kD globular protein found in body secretions such as milk and saliva and is a member of the transferrin family proteins. Transferrins control the level of free iron in the body, by binding and transporting iron. Lactoferrin does not appear to have a transporting function, instead it has antimicrobial activity, by keeping the levels of iron in body fluids low and thus preventing microbes from acquiring iron. Removing free iron from body fluids and inflamed areas also serve to protect against the damaging effects of free radicals. Lactoferrin is used as a therapeutic and prophylactic treatment of various illnesses, such as cancers and intestinal illnesses. May be used to detect lactoferrin in ELISA assays.
<b>Reactivity:</b>	Human
<b>Purification:</b>	Affinity purified
<b>Presentation:</b>	PBS, pH 7.4, 0.09% sodium azide.
<b>Recommended Storage:</b>	+4°C or -20°C, Avoid repeated freezing and thawing.
<b>Usage Summary:</b>	Immunohistochemistry: LS-B2636 was validated for use in immunohistochemistry on a panel of 21 formalin-fixed, paraffin-embedded (FFPE) human tissues after heat induced antigen retrieval in pH 6.0 citrate buffer. After incubation with the primary antibody, slides were incubated with biotinylated secondary antibody, followed by alkaline phosphatase-streptavidin and chromogen. The stained slides were evaluated by a pathologist to confirm staining specificity. The optimal working concentration for LS-B2636 was determined to be 10 ug/ml. ELISA: May be used in an indirect ELISA or as a detection antibody in a sandwich ELISA together with LS-C58299 as a capture agent.
<b>Uses:</b>	IHC - Paraffin (10 µg/ml), Western blot, ELISA (Optimal dilution to be determined by the researcher)
<b>Size:</b>	50 µg
<b>Concentration:</b>	1 mg/ml

**Immunohistochemistry Image:**



Anti-LTF / Lactoferrin antibody IHC of human breast, ductal with secretion.  
Immunohistochemistry of formalin-fixed, paraffin-embedded tissue after heat-induced antigen retrieval. Antibody LS-B2636 concentration 10 ug/ml.

**Requested From:**

Japan

Laboratory Reagent For In Vitro Research Use Only

Not for resale without prior written consent from LifeSpan BioSciences, Inc.

Created on 9/23/2014

© 2014 LifeSpan BioSciences