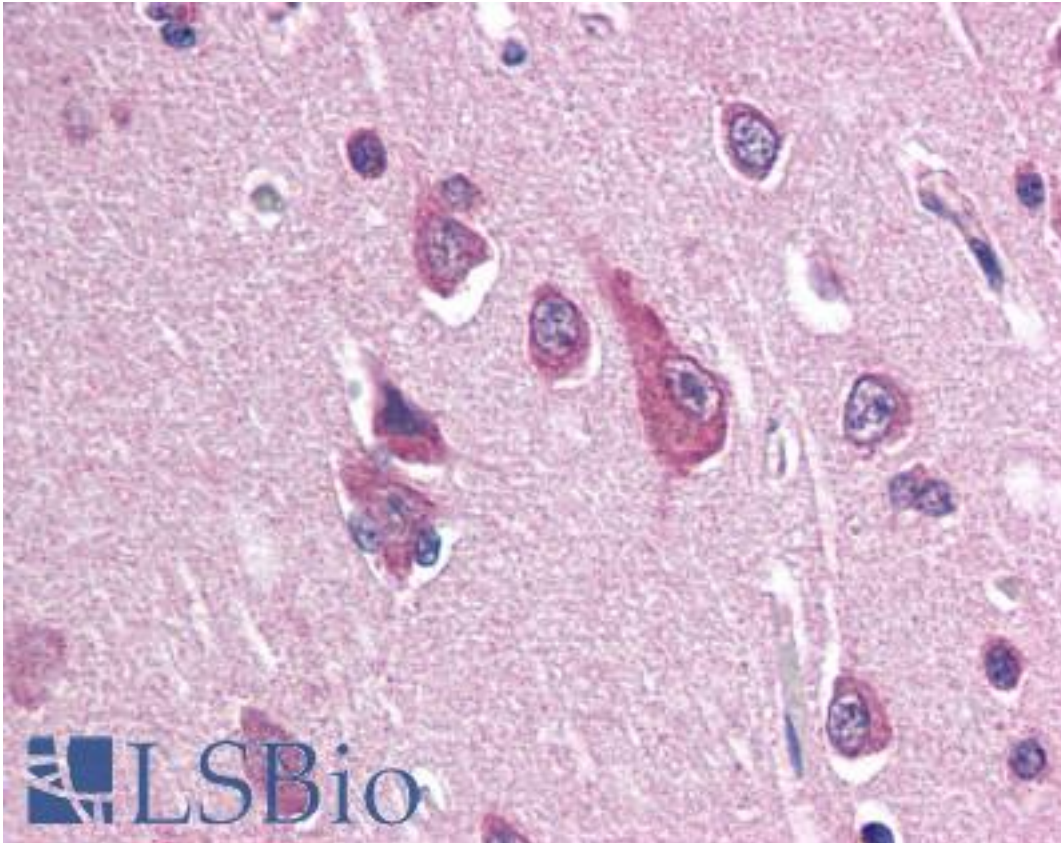


SCN2B Rabbit anti-Rat Polyclonal (N-Terminus) Antibody - LS-B2625 - LSBio	
CatalogID:	LS-B2625
Validation:	This antibody replaces catalog number LS-C46874. It has been validated for use in the following assays: IHC-P.
Target:	sodium channel, voltage-gated, type II, beta subunit (SCN2B)
Synonyms:	SCN2B Antibody, Nabeta2.1 Antibody, Navbeta2 Antibody, Sodium channel subunit beta-2 Antibody, Sodium channel beta 2 subunit Antibody
Family / Subfamily:	Ion Channel / Sodium channel - voltage-gated
Host	SCN2B antibody was produced in Rabbit
Clonality:	Polyclonal
Immunogen Species:	SCN2B antibody was raised against Rat
Antigen Type:	Synthetic peptide
Immunogen:	SCN2B antibody was raised against synthetic peptide from rat SCN2B.
Specificity:	synthetic peptide corresponding to N-terminal residues of rat Scn2b (Sodium channel beta-2 subunit)
Epitope:	N-Terminus
Reactivity:	Rat, Human
Purification:	Immunoaffinity purified
Presentation:	PBS, 0.01% sodium azide, 50% glycerol.
Recommended Storage:	+4°C or -20°C, Avoid repeated freezing and thawing.
Usage Summary:	Immunohistochemistry: LS-B2625 was validated for use in immunohistochemistry on a panel of 21 formalin-fixed, paraffin-embedded (FFPE) human tissues after heat induced antigen retrieval in pH 6.0 citrate buffer. After incubation with the primary antibody, slides were incubated with biotinylated secondary antibody, followed by alkaline phosphatase-streptavidin and chromogen. The stained slides were evaluated by a pathologist to confirm staining specificity. The optimal working concentration for LS-B2625 was determined to be 10-20 ug/ml.
Uses:	IHC - Paraffin (10 - 20 µg/ml), Western blot (1 µg/ml), ELISA (Optimal dilution to be determined by the researcher)
Size:	50 µg
Concentration:	0.5 mg/ml

Immunohistochemistry Image:



Anti-SCN2B antibody IHC of human brain, cortex. Immunohistochemistry of formalin-fixed, paraffin-embedded tissue after heat-induced antigen retrieval. Antibody LS-B2625 concentration 20 ug/ml.

Requested From:

Japan

Laboratory Reagent For In Vitro Research Use Only

Not for resale without prior written consent from LifeSpan BioSciences, Inc.

Created on 9/23/2014

© 2014 LifeSpan BioSciences