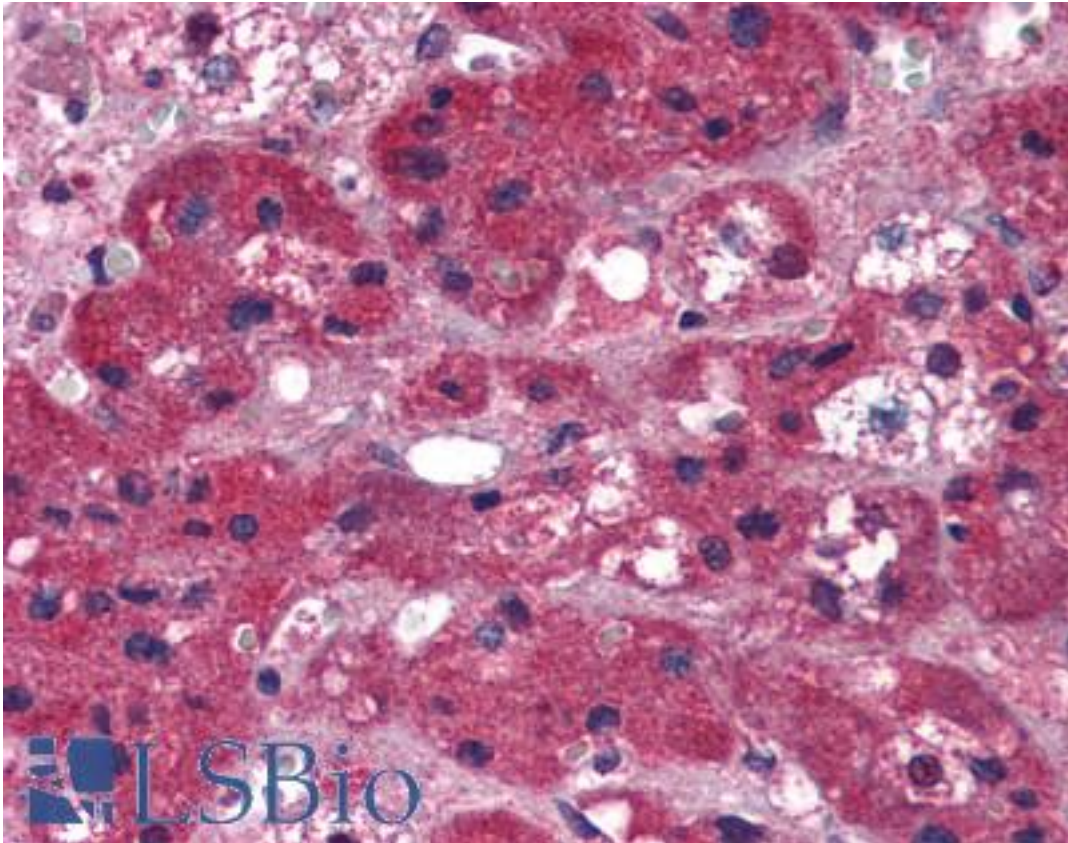


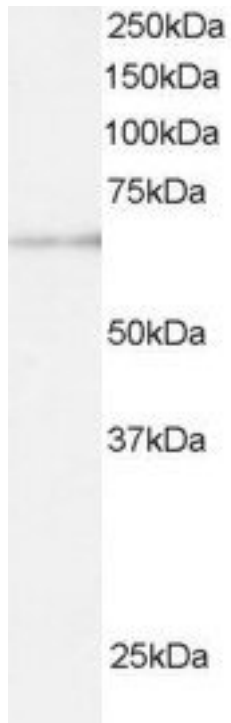
ARIH1 Goat anti-Human Polyclonal (C-Terminus) Antibody - LS-B2620 - LSBio	
<b>CatalogID:</b>	LS-B2620
<b>Validation:</b>	This antibody replaces catalog number LS-C54533. It has been validated for use in the following assays: IHC-P.
<b>Target:</b>	ariadne RBR E3 ubiquitin protein ligase 1 (ARIH1)
<b>Synonyms:</b>	ARIH1 Antibody, ARI Antibody, HARI Antibody, Monocyte protein 6 Antibody, MOP-6 Antibody, Protein ariadne-1 homolog Antibody, Ubch7-binding protein Antibody, ARI-1 Antibody, UbcM4-interacting protein Antibody, H7-AP2 Antibody, HHARI Antibody, MOP6 Antibody, UBCH7BP Antibody
<b>Host</b>	ARIH1 antibody was produced in Goat
<b>Clonality:</b>	Polyclonal
<b>Immunogen Species:</b>	ARIH1 antibody was raised against Human
<b>Antigen Type:</b>	Synthetic peptide
<b>Immunogen:</b>	ARIH1 antibody was raised against synthetic peptide C-HEGYEKDLWEYIED from the C-terminus of human ARIH1 (NP_005735.2). Percent identity by BLAST analysis: Human, Gorilla, Gibbon, Marmoset, Mouse, Rat, Elephant, Panda, Dog, Bat, Bovine, Horse, Rabbit, Pig, Opossum, Turkey, Chicken, Platypus, Xenopus, Stickleback, Pufferfish, Zebrafish (100%).
<b>Specificity:</b>	Human ARIH1.
<b>Epitope:</b>	C-Terminus
<b>Reactivity:</b>	Human, Gorilla, Gibbon, Monkey, Mouse, Rat, Bat, Bovine, Dog, Horse, Pig, Rabbit, Chicken, Xenopus, Zebrafish
<b>Purification:</b>	Immunoaffinity purified
<b>Presentation:</b>	Tris-buffered saline, pH 7.3, 0.5% BSA, 0.02% sodium azide
<b>Recommended Storage:</b>	Store at -20°C. Minimize freezing and thawing.
<b>Usage Summary:</b>	Immunohistochemistry: LS-B2620 was validated for use in immunohistochemistry on a panel of 21 formalin-fixed, paraffin-embedded (FFPE) human tissues after heat induced antigen retrieval in pH 6.0 citrate buffer. After incubation with the primary antibody, slides were incubated with biotinylated secondary antibody, followed by alkaline phosphatase-streptavidin and chromogen. The stained slides were evaluated by a pathologist to confirm staining specificity. The optimal working concentration for LS-B2620 was determined to be 5 ug/ml.
<b>Uses:</b>	IHC - Paraffin (5 µg/ml), Western blot (0.2 - 1 µg/ml), ELISA (1:32000) (Optimal dilution to be determined by the researcher)
<b>Size:</b>	50 µg
<b>Concentration:</b>	0.5 mg/ml

**Immunohistochemistry Image:**



Anti-ARIH1 antibody IHC of human adrenal. Immunohistochemistry of formalin-fixed, paraffin-embedded tissue after heat-induced antigen retrieval. Antibody LS-B2620 concentration 5 ug/ml.

**Western Blot Image:**



Antibody staining (0.5 ug/ml) of U937 lysate (RIPA buffer, 30 ug total protein per lane).  
Primary incubated for 1 hour. Detected by Western blot of chemiluminescence.

**Requested From:**

Japan

Laboratory Reagent For In Vitro Research Use Only

Not for resale without prior written consent from LifeSpan BioSciences, Inc.

Created on 9/23/2014

© 2014 LifeSpan BioSciences