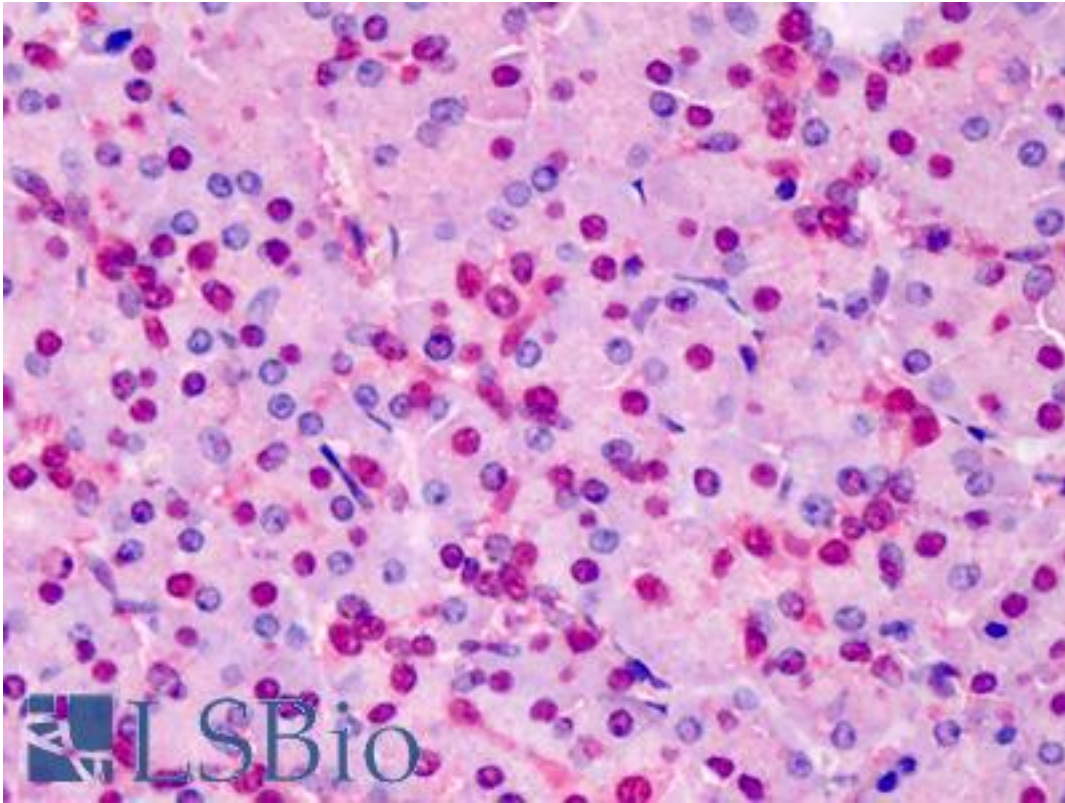


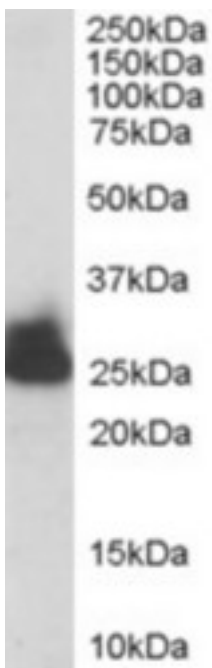
TPI1 / TPI Goat anti-Human Polyclonal (C-Terminus) Antibody - LS-B2611 - LSBio	
<b>CatalogID:</b>	LS-B2611
<b>Validation:</b>	This antibody replaces catalog number LS-C55629. It has been validated for use in the following assays: IHC-P.
<b>Target:</b>	triosephosphate isomerase 1 (TPI1)
<b>Synonyms:</b>	TPI1 Antibody, Triose-phosphate isomerase Antibody, Triosephosphate isomerase Antibody, TPI Antibody, Triosephosphate isomerase 1 Antibody, TIM Antibody
<b>Host</b>	TPI1 antibody was produced in Goat
<b>Clonality:</b>	Polyclonal
<b>Immunogen Species:</b>	TPI1 / TPI antibody was raised against Human
<b>Antigen Type:</b>	Synthetic peptide
<b>Immunogen:</b>	TPI1 / TPI antibody was raised against synthetic peptide C-LKPEFVDIINAKQ from the C-terminus of human TPI1 (NP_000356.1; NP_001152759.1). Percent identity by BLAST analysis: Human, Chimpanzee, Gorilla, Orangutan, Gibbon, Monkey, Marmoset, Mouse, Rat, Hamster, Elephant, Panda, Bat, Bovine, Dog, Horse, Rabbit, Salmon, Pike (100%); Pig, Chicken, Xenopus, Smelt, Pufferfish, Drosophila (92%); Catfish, Stickleback, Zebrafish, Neurospora, Beetle, Sordaria, Tick, Chaetomium, Thielavia (85%).
<b>Specificity:</b>	Human TPI1. This antibody is expected to recognise both reported isoforms.
<b>Epitope:</b>	C-Terminus
<b>Reactivity:</b>	Human, Chimpanzee, Gorilla, Orangutan, Gibbon, Monkey, Mouse, Rat, Bat, Bovine, Dog, Hamster, Horse, Rabbit
<b>Predicted Reactivity:</b>	Pig, Chicken, Xenopus, Drosophila
<b>Purification:</b>	Immunoaffinity purified
<b>Presentation:</b>	Tris-buffered saline, pH 7.3, 0.5% BSA, 0.02% sodium azide
<b>Recommended Storage:</b>	Store at -20°C. Minimize freezing and thawing.
<b>Usage Summary:</b>	Immunohistochemistry: LS-B2611 was validated for use in immunohistochemistry on a panel of 21 formalin-fixed, paraffin-embedded (FFPE) human tissues after heat induced antigen retrieval in pH 6.0 citrate buffer. After incubation with the primary antibody, slides were incubated with biotinylated secondary antibody, followed by alkaline phosphatase-streptavidin and chromogen. The stained slides were evaluated by a pathologist to confirm staining specificity. The optimal working concentration for LS-B2611 was determined to be 5 µg/ml.
<b>Uses:</b>	IHC - Paraffin (5 µg/ml), Western blot (0.01 - 0.03 µg/ml), ELISA (1:16000) (Optimal dilution to be determined by the researcher)
<b>Size:</b>	50 µg
<b>Concentration:</b>	0.5 mg/ml

**Immunohistochemistry Image:**



Anti-TPI1 antibody IHC of human pancreas. Immunohistochemistry of formalin-fixed, paraffin-embedded tissue after heat-induced antigen retrieval. Antibody LS-B2611 concentration 5 ug/ml.

**Western Blot Image:**



Antibody staining (0.003 ug/ml) of human liver lysate (RIPA buffer, 30 ug total protein per lane). Primary incubated for 1 hour. Detected by Western blot of chemiluminescence.

<b>Requested From:</b>	Japan
Laboratory Reagent For In Vitro Research Use Only	
Not for resale without prior written consent from LifeSpan BioSciences, Inc.	
Created on 9/23/2014	
© 2014 LifeSpan BioSciences	