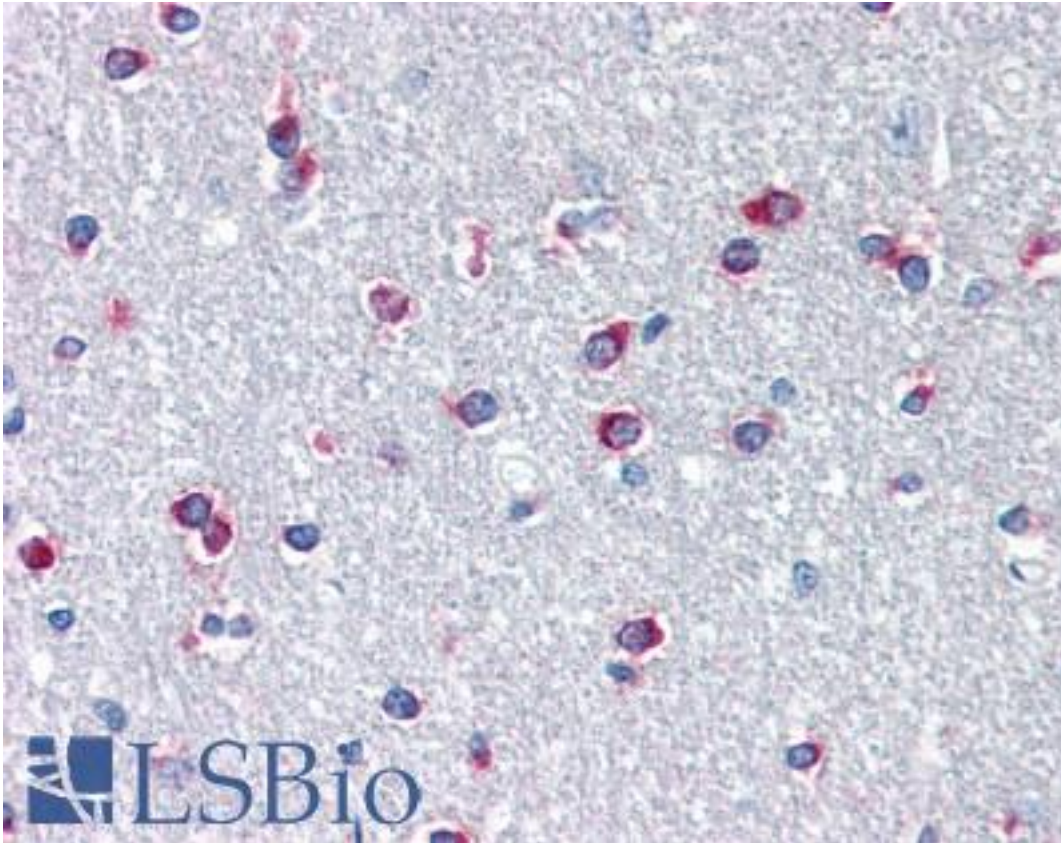


PITX3 / PTX3 Rabbit anti-Mouse Polyclonal (N-Terminus) Antibody - LS-B2606 - LSBio	
<b>CatalogID:</b>	LS-B2606
<b>Validation:</b>	This antibody replaces catalog number LS-C17510. It has been validated for use in the following assays: IHC-P.
<b>Target:</b>	paired-like homeodomain 3 (PITX3)
<b>Synonyms:</b>	PITX3 Antibody, CTPP4 Antibody, Homeobox protein PITX3 Antibody, Paired-like homeodomain 3 Antibody, Pituitary homeobox 3 Antibody
<b>Host</b>	PITX3 antibody was produced in Rabbit
<b>Clonality:</b>	Polyclonal
<b>Isotype:</b>	IgG
<b>Immunogen Species:</b>	PITX3 / PTX3 antibody was raised against Mouse
<b>Antigen Type:</b>	Synthetic peptide
<b>Immunogen:</b>	PITX3 / PTX3 antibody was raised against synthetic peptide derived from the N-terminal region of the mouse PiTX3 protein.
<b>Specificity:</b>	Recognizes mouse PiTX3 protein. Reactivity has been confirmed with fetal mouse brain homogenate.
<b>Epitope:</b>	N-Terminus
<b>Reactivity:</b>	Mouse, Human
<b>Purification:</b>	Immunoaffinity purified
<b>Presentation:</b>	PBS, pH 7.4, 0.1% sodium azide.
<b>Recommended Storage:</b>	+4°C or -20°C, Avoid repeated freezing and thawing.
<b>Usage Summary:</b>	Immunohistochemistry: LS-B2606 was validated for use in immunohistochemistry on a panel of 21 formalin-fixed, paraffin-embedded (FFPE) human tissues after heat induced antigen retrieval in pH 6.0 citrate buffer. After incubation with the primary antibody, slides were incubated with biotinylated secondary antibody, followed by alkaline phosphatase-streptavidin and chromogen. The stained slides were evaluated by a pathologist to confirm staining specificity. The optimal working concentration for LS-B2606 was determined to be 5 ug/ml. Western Blot: 1-3 ug/ml. Identifies a single band at ~32kD. Bands of unknown origin are observed at ~40 and 50kD.
<b>Uses:</b>	IHC - Paraffin (5 µg/ml), Immunofluorescence (0.7 - 2 µg/ml), Western blot (1 - 3 µg/ml) (Optimal dilution to be determined by the researcher)
<b>Size:</b>	25 µg
<b>Concentration:</b>	0.25 mg/ml

**Immunohistochemistry Image:**



Anti-PITX3 antibody IHC of human brain, cortex, white matter. Immunohistochemistry of formalin-fixed, paraffin-embedded tissue after heat-induced antigen retrieval. Antibody LS-B2606 concentration 5 ug/ml.

**Requested From:**

Japan

Laboratory Reagent For In Vitro Research Use Only

Not for resale without prior written consent from LifeSpan BioSciences, Inc.

Created on 9/23/2014

© 2014 LifeSpan BioSciences