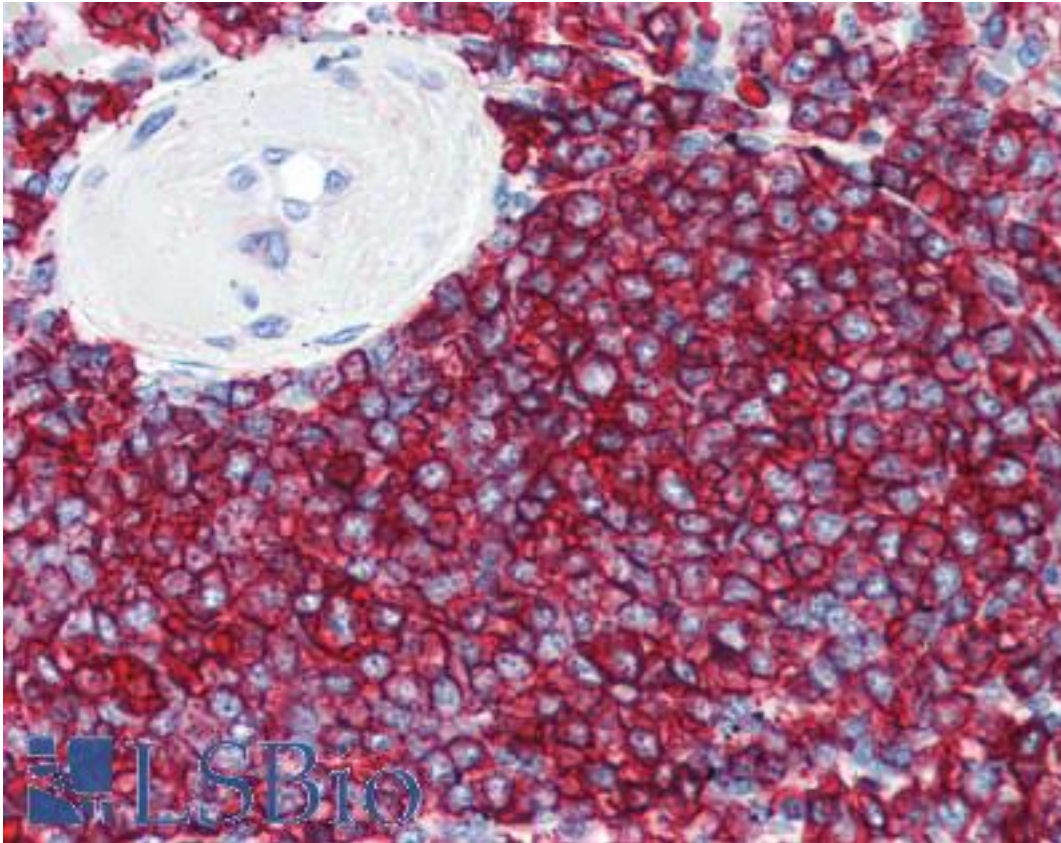


CD20 Rabbit anti-Human Polyclonal (C-Terminus) Antibody - LS-B2605 - LSBio	
<b>CatalogID:</b>	LS-B2605
<b>Validation:</b>	This antibody replaces catalog number LS-C13108. It has been validated for use in the following assays: IHC-P.
<b>Target:</b>	membrane-spanning 4-domains, subfamily A, member 1 (MS4A1)
<b>Synonyms:</b>	MS4A1 Antibody, B-lymphocyte antigen CD20 Antibody, B1 Antibody, Bp35 Antibody, CD20 Antibody, CD20 antigen Antibody, CD20 receptor Antibody, LEU-16 Antibody, CVID5 Antibody
<b>Host</b>	MS4A1 antibody was produced in Rabbit
<b>Clonality:</b>	Polyclonal
<b>Immunogen Species:</b>	CD20 antibody was raised against Human
<b>Antigen Type:</b>	Synthetic peptide
<b>Immunogen:</b>	CD20 antibody was raised against synthetic peptide derived from C-terminus of human CD20 protein.
<b>Specificity:</b>	Recognizes CD20. Species cross-reactivity: Human.
<b>Epitope:</b>	C-Terminus
<b>Reactivity:</b>	Human
<b>Purification:</b>	Immunoaffinity purified
<b>Presentation:</b>	PBS, pH 7.6, 1% BSA, 0.1% sodium azide
<b>Recommended Storage:</b>	Long term: -20°C; Short term: +4°C. Avoid repeat freeze-thaw cycles.
<b>Usage Summary:</b>	Immunohistochemistry: LS-B2605 was validated for use in immunohistochemistry on a panel of 21 formalin-fixed, paraffin-embedded (FFPE) human tissues after heat induced antigen retrieval in pH 6.0 citrate buffer. After incubation with the primary antibody, slides were incubated with biotinylated secondary antibody, followed by alkaline phosphatase-streptavidin and chromogen. The stained slides were evaluated by a pathologist to confirm staining specificity. The optimal working concentration for LS-B2605 was determined to be 1:100.
<b>Uses:</b>	IHC - Paraffin (1:100), Western blot, Immunoprecipitation (Optimal dilution to be determined by the researcher)
<b>Size:</b>	125 µl
<b>Concentration:</b>	0.2 mg/ml

**Immunohistochemistry Image:**



Anti-MS4A1 / CD20 antibody IHC of human spleen. Immunohistochemistry of formalin-fixed, paraffin-embedded tissue after heat-induced antigen retrieval. Antibody LS-B2605 dilution 1:100.

**Requested From:**

Japan

Laboratory Reagent For In Vitro Research Use Only

Not for resale without prior written consent from LifeSpan BioSciences, Inc.

Created on 9/23/2014

© 2014 LifeSpan BioSciences