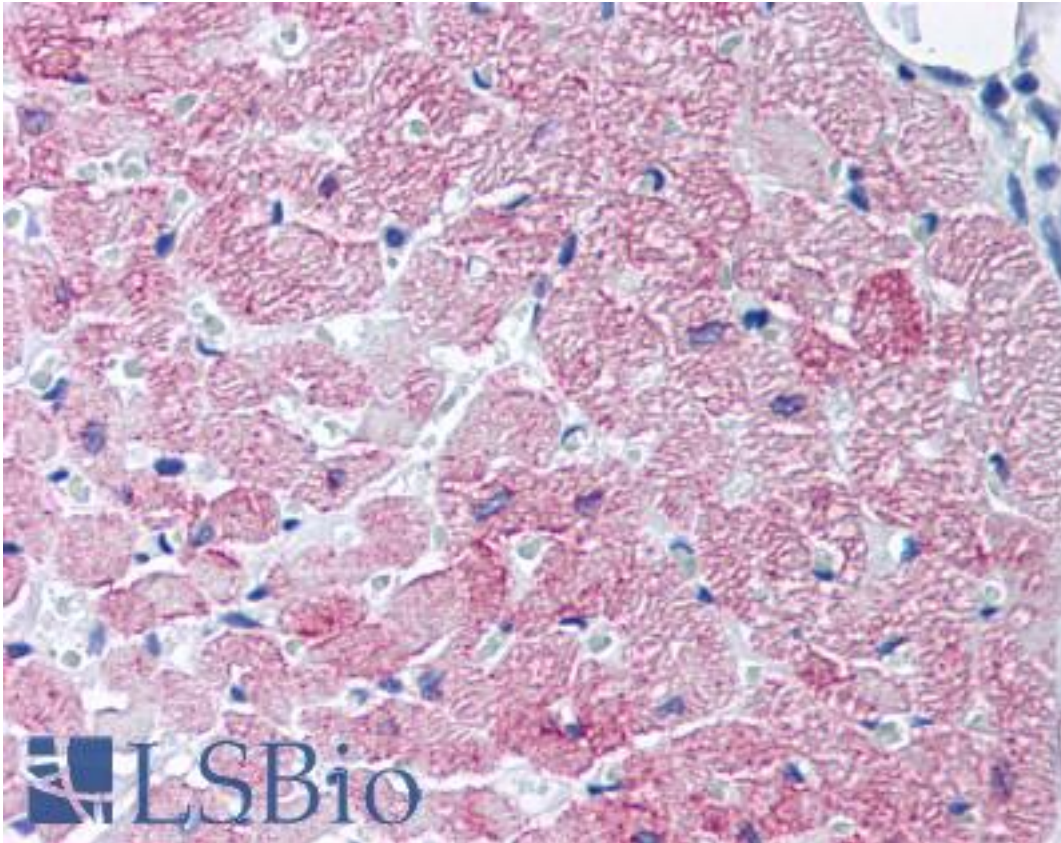


SLC2A4 / GLUT4 / GLUT-4 Rabbit anti-Human Polyclonal Antibody - LS-B26 - LSBio	
CatalogID:	LS-B26
Validation:	This antibody replaces catalog number LS-C11345. It has been validated for use in the following assays: IHC.
Target:	solute carrier family 2 (facilitated glucose transporter), member 4 (SLC2A4)
Synonyms:	SLC2A4 Antibody, Glucose transporter 4 Antibody, Glucose transporter GLUT4 Antibody, GLUT4 Antibody, GLUT-4 Antibody
Family / Subfamily:	Transporter / Sugar transporter
Host	SLC2A4 antibody was produced in Rabbit
Clonality:	Polyclonal
Immunogen Species:	SLC2A4 / GLUT4 / GLUT-4 antibody was raised against Human
Antigen Type:	Synthetic peptide - KLH conjugated
Immunogen:	SLC2A4 / GLUT4 / GLUT-4 antibody was raised against a 12 amino acid peptide corresponding to the carboxyl terminus of the insulin regulatable glucose transporter conjugated to keyhole limpet hemocyanin.
Reactivity:	Human, Monkey, Mouse, Rat, Pig
Purification:	Affinity purified
Presentation:	PBS, 0.09% sodium azide.
Recommended Storage:	+4°C or -20°C, Avoid repeated freezing and thawing.
Usage Summary:	Immunohistochemistry: LS-B26 was validated for use in immunohistochemistry on a panel of 21 formalin-fixed, paraffin-embedded (FFPE) human tissues after heat induced antigen retrieval in pH 6.0 citrate buffer. After incubation with the primary antibody, slides were incubated with biotinylated secondary antibody, followed by alkaline phosphatase-streptavidin and chromogen. The stained slides were evaluated by a pathologist to confirm staining specificity. The optimal working concentration for LS-B26 was determined to be 10-20 ug/ml.
Uses:	IHC - Paraffin (10 - 20 µg/ml), IHC - Frozen, Western blot, Immunoprecipitation (Optimal dilution to be determined by the researcher)
Size:	50 µl
Concentration:	5 mg/ml

Immunohistochemistry Image:



Anti-SLC2A4 / GLUT4 antibody IHC of human heart, cardiac myocytes.
Immunohistochemistry of formalin-fixed, paraffin-embedded tissue after heat-induced antigen retrieval. Antibody LS-B26 concentration 20 ug/ml.

Requested From:

Japan

Laboratory Reagent For In Vitro Research Use Only

Not for resale without prior written consent from LifeSpan BioSciences, Inc.

Created on 9/23/2014

© 2014 LifeSpan BioSciences