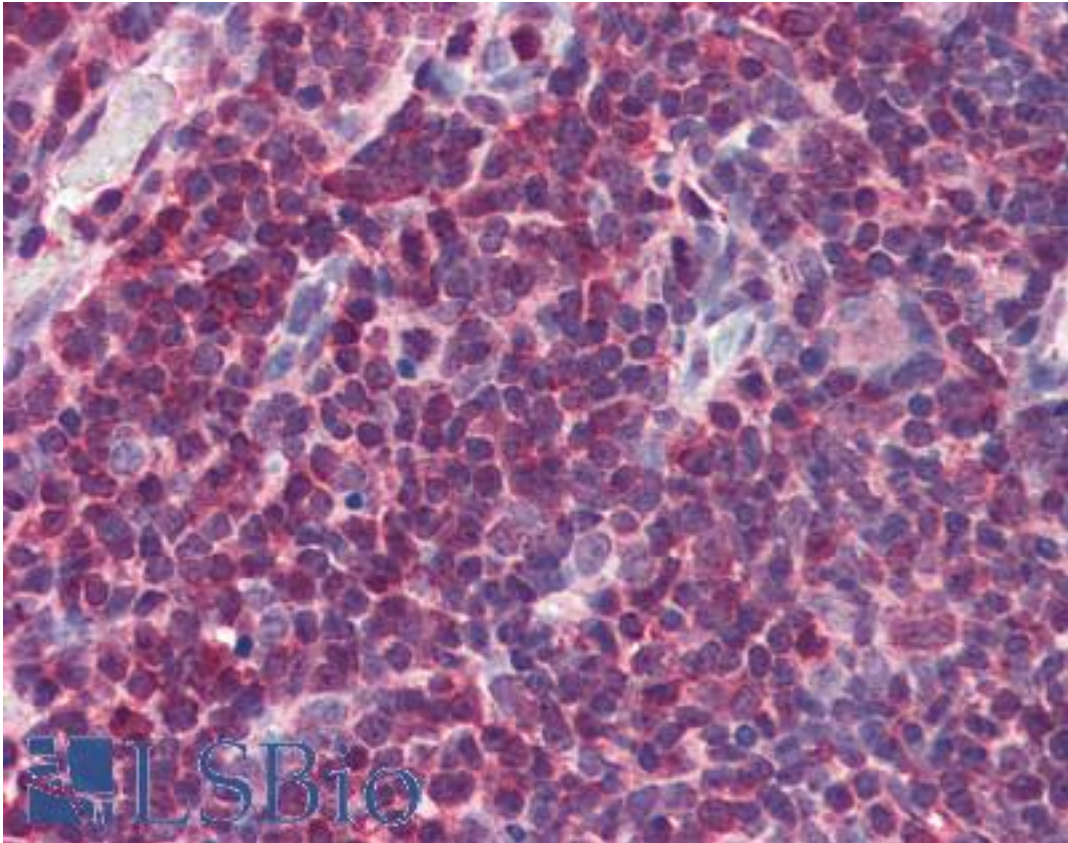


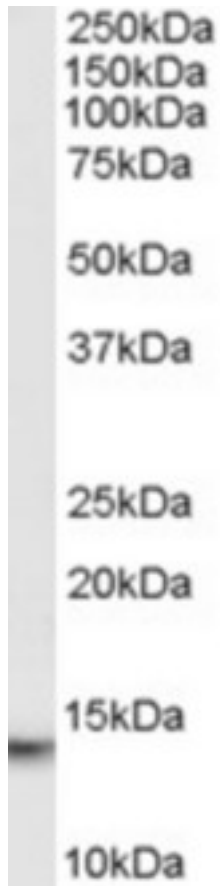
MIF Goat anti-Human Polyclonal (C-Terminus) Antibody - LS-B2586 - LSBio	
CatalogID:	LS-B2586
Validation:	This antibody replaces catalog number LS-C55108. It has been validated for use in the following assays: IHC-P.
Target:	macrophage migration inhibitory factor (glycosylation-inhibiting factor) (MIF)
Synonyms:	MIF Antibody, GLIF Antibody, L-dopachrome tautomerase Antibody, L-dopachrome isomerase Antibody, MMIF Antibody, Phenylpyruvate tautomerase Antibody
Host	MIF antibody was produced in Goat
Clonality:	Polyclonal
Immunogen Species:	MIF antibody was raised against Human
Antigen Type:	Synthetic peptide
Immunogen:	MIF antibody was raised against synthetic peptide C-NAANVGWNNSTFA from the C-terminus of human MIF (NP_002406.1). Percent identity by BLAST analysis: Human, Gorilla, Gibbon, Monkey (100%); Mouse, Rat, Sheep, Elephant, Bovine, Horse, Rabbit, Pig, Turkey, Chicken, Platypus, Xenopus (92%); Hamster (85%).
Specificity:	Human MIF.
Epitope:	C-Terminus
Reactivity:	Human, Gorilla, Gibbon, Monkey
Predicted Reactivity:	Mouse, Rat, Bovine, Horse, Pig, Rabbit, Sheep, Chicken, Xenopus
Purification:	Immunoaffinity purified
Presentation:	Tris-buffered saline, pH 7.3, 0.5% BSA, 0.02% sodium azide
Recommended Storage:	Store at -20°C. Minimize freezing and thawing.
Usage Summary:	Immunohistochemistry: LS-B2586 was validated for use in immunohistochemistry on a panel of 21 formalin-fixed, paraffin-embedded (FFPE) human tissues after heat induced antigen retrieval in pH 6.0 citrate buffer. After incubation with the primary antibody, slides were incubated with biotinylated secondary antibody, followed by alkaline phosphatase-streptavidin and chromogen. The stained slides were evaluated by a pathologist to confirm staining specificity. The optimal working concentration for LS-B2586 was determined to be 2.5 ug/ml.
Uses:	IHC - Paraffin (2.5 µg/ml), Western blot (0.01 - 0.03 µg/ml), ELISA (1:128000) (Optimal dilution to be determined by the researcher)
Size:	50 µg
Concentration:	0.5 mg/ml

Immunohistochemistry Image:



Anti-MIF antibody IHC of human thymus. Immunohistochemistry of formalin-fixed, paraffin-embedded tissue after heat-induced antigen retrieval. Antibody LS-B2586 concentration 5 ug/ml.

Western Blot Image:



Antibody (0.01 ug/ml) staining of Human Thymus lysate (35 ug protein in RIPA buffer). Primary incubation was 1 hour. Detected by chemiluminescence.

Requested From:

Japan

Laboratory Reagent For In Vitro Research Use Only

Not for resale without prior written consent from LifeSpan BioSciences, Inc.

Created on 9/23/2014

© 2014 LifeSpan BioSciences