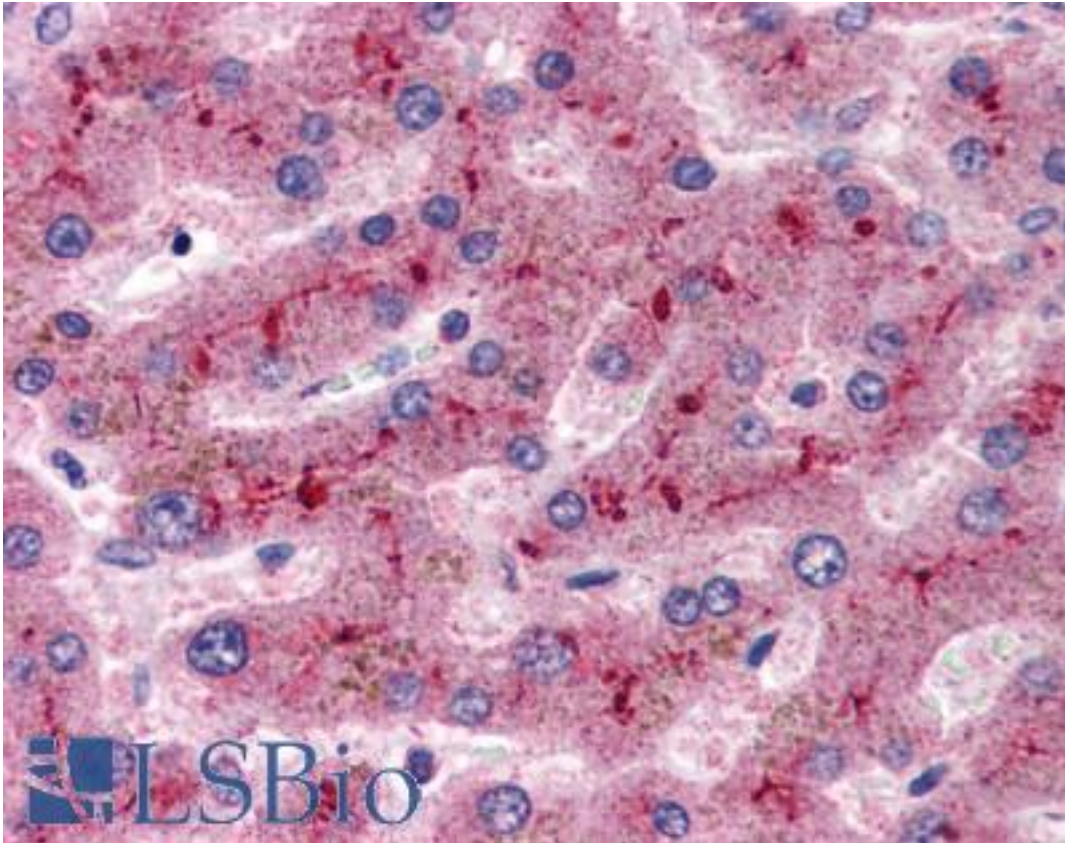


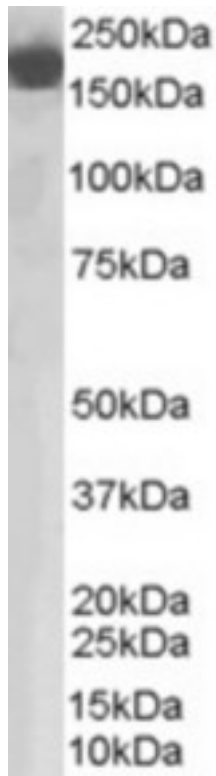
CFH / Complement Factor H Goat anti-Human Polyclonal (Internal) Antibody - LS-B2585 - LSBio	
<b>CatalogID:</b>	LS-B2585
<b>Validation:</b>	This antibody replaces catalog number LS-C54667. It has been validated for use in the following assays: IHC-P.
<b>Target:</b>	complement factor H (CFH)
<b>Synonyms:</b>	CFH Antibody, Adrenomedullin binding protein Antibody, AHUS1 Antibody, AMBP1 Antibody, ARMS1 Antibody, ARMD4 Antibody, Beta-1-H-globulin Antibody, Factor H Antibody, Factor H-like 1 Antibody, HF Antibody, HF2 Antibody, H factor 1 Antibody, H factor 2 (complement) Antibody, HUS Antibody, HF1 Antibody, Beta-1H Antibody, CFHL3 Antibody, Complement factor H Antibody, H factor 1 (complement) Antibody
<b>Host</b>	CFH antibody was produced in Goat
<b>Clonality:</b>	Polyclonal
<b>Immunogen Species:</b>	CFH / Complement Factor H antibody was raised against Human
<b>Antigen Type:</b>	Synthetic peptide
<b>Immunogen:</b>	CFH / Complement Factor H antibody was raised against synthetic peptide C-HLVPDRKKDQYK from an internal region of human CFH / Factor H (NP_000177.2). Percent identity by BLAST analysis: Human, Gorilla, Gibbon (100%).
<b>Specificity:</b>	Human CFH / Factor H. This antibody is expected to recognize isoform a (NP_000177.2) only.
<b>Epitope:</b>	Internal
<b>Reactivity:</b>	Human, Gorilla, Gibbon
<b>Purification:</b>	Immunoaffinity purified
<b>Presentation:</b>	Tris-buffered saline, pH 7.3, 0.5% BSA, 0.02% sodium azide
<b>Recommended Storage:</b>	Store at -20°C. Minimize freezing and thawing.
<b>Usage Summary:</b>	Immunohistochemistry: LS-B2585 was validated for use in immunohistochemistry on a panel of 21 formalin-fixed, paraffin-embedded (FFPE) human tissues after heat induced antigen retrieval in pH 6.0 citrate buffer. After incubation with the primary antibody, slides were incubated with biotinylated secondary antibody, followed by alkaline phosphatase-streptavidin and chromogen. The stained slides were evaluated by a pathologist to confirm staining specificity. The optimal working concentration for LS-B2585 was determined to be 2.5 µg/ml.
<b>Uses:</b>	IHC - Paraffin (2.5 µg/ml), Western blot (0.03 - 0.1 µg/ml), ELISA (1:32000) (Optimal dilution to be determined by the researcher)
<b>Size:</b>	50 µg
<b>Concentration:</b>	0.5 mg/ml

**Immunohistochemistry Image:**



Anti-Factor H antibody IHC of human liver. Immunohistochemistry of formalin-fixed, paraffin-embedded tissue after heat-induced antigen retrieval. Antibody LS-B2585 concentration 5 ug/ml.

**Western Blot Image:**



Antibody staining (0.03 ug/ml) of human lung lysate (RIPA buffer, 35 ug total protein per lane). Primary incubated for 1 hour. Detected by Western blot of chemiluminescence.

**Requested From:**

Japan

Laboratory Reagent For In Vitro Research Use Only

Not for resale without prior written consent from LifeSpan BioSciences, Inc.

Created on 9/23/2014

© 2014 LifeSpan BioSciences