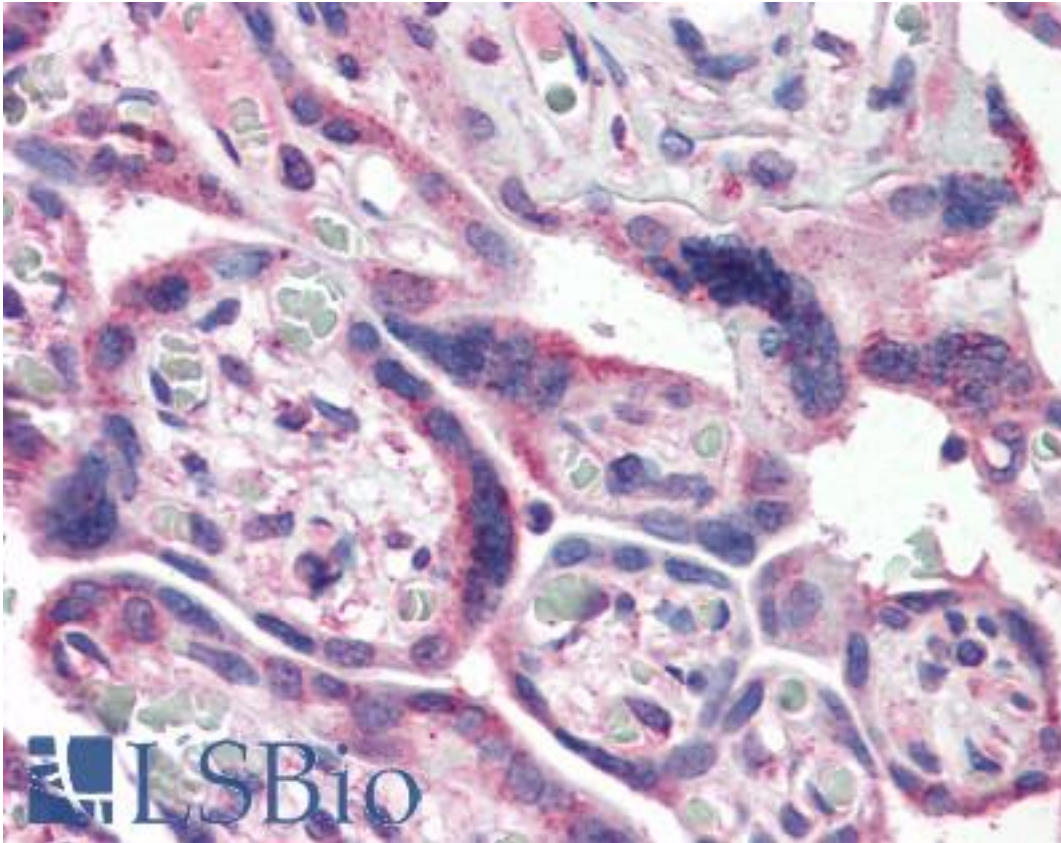


NFKB1 Rat anti-Human Monoclonal (aa1-15) Antibody - LS-B2582 - LSBio

CatalogID:	LS-B2582
Validation:	This antibody replaces catalog number LS-C9275. It has been validated for use in the following assays: IHC-P.
Target:	nuclear factor of kappa light polypeptide gene enhancer in B-cells 1 (NFKB1)
Synonyms:	NFKB1 Antibody, Ebp- 1 Antibody, EBP-1 Antibody, NF-KappaB p50 Antibody, NFkappaB Antibody, NFKB-p50 Antibody, KBF1 Antibody, NF-kappa-B Antibody, NF-kappaB Antibody, NF-kB1 Antibody, NFKB-p105 Antibody, p105 Antibody, p50 Antibody, DNA binding factor KBF1 Antibody, DNA-binding factor KBF1 Antibody, NF-kappabeta Antibody
Family / Subfamily:	Apoptosis / not assigned-Other
Host	NFKB1 antibody was produced in Rat
Clonality:	Monoclonal
Isotype:	IgG1
Immunogen Species:	NFKB1 antibody was raised against Human
Antigen Type:	Recombinant protein
Immunogen:	NFKB1 antibody was raised against recombinant human NF- B (p50 subunit).
Specificity:	Recognizes p50 subunit of human NF-kB (epitope in the region aa 1-15).
Epitope:	aa1-15
Reactivity:	Human
Purification:	Protein G purified
Presentation:	PBS, 0.1% sodium azide.
Recommended Storage:	Long term: Add glycerol (40-50%) -20°C; Short term: +4°C
Usage Summary:	Immunohistochemistry: LS-B2582 was validated for use in immunohistochemistry on a panel of 21 formalin-fixed, paraffin-embedded (FFPE) human tissues after heat induced antigen retrieval in pH 6.0 citrate buffer. After incubation with the primary antibody, slides were incubated with biotinylated secondary antibody, followed by alkaline phosphatase-streptavidin and chromogen. The stained slides were evaluated by a pathologist to confirm staining specificity. The optimal working concentration for LS-B2582 was determined to be 10 ug/ml.
Uses:	IHC - Paraffin (10 µg/ml), Western blot (Optimal dilution to be determined by the researcher)
Size:	50 µg

Immunohistochemistry Image:



Anti-NFKB1 antibody IHC of human placenta. Immunohistochemistry of formalin-fixed, paraffin-embedded tissue after heat-induced antigen retrieval. Antibody LS-B2582 concentration 10 ug/ml.

Requested From:

Japan

Laboratory Reagent For In Vitro Research Use Only

Not for resale without prior written consent from LifeSpan BioSciences, Inc.

Created on 9/23/2014

© 2014 LifeSpan BioSciences