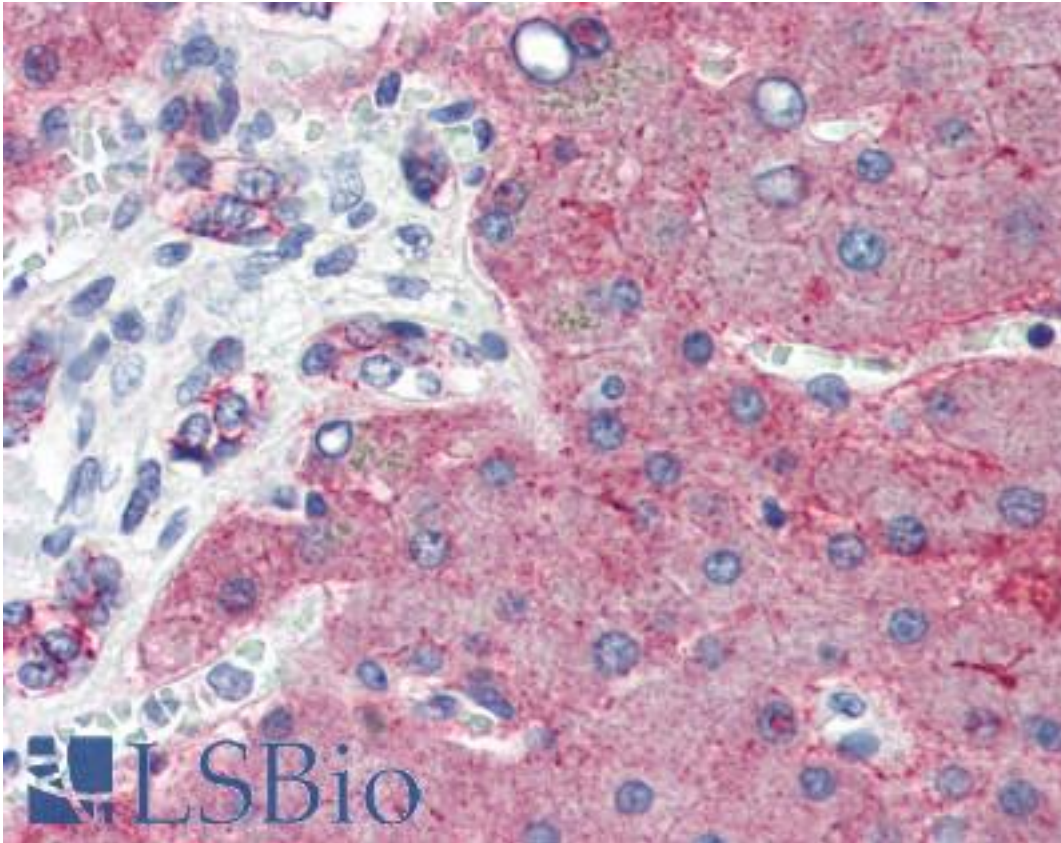


CLDN1 / Claudin 1 Rabbit anti-Human Polyclonal (C-Terminus) Antibody - LS-B2571 - LSBio	
<b>CatalogID:</b>	LS-B2571
<b>Validation:</b>	This antibody replaces catalog number LS-C6143. It has been validated for use in the following assays: IHC-P.
<b>Target:</b>	claudin 1 (CLDN1)
<b>Synonyms:</b>	CLDN1 Antibody, Claudin-1 Antibody, Claudin 1 Antibody, ILVASC Antibody, SEMP1 Antibody, CLD1 Antibody
<b>Family / Subfamily:</b>	Claudin / not assigned-Claudin
<b>Host</b>	CLDN1 antibody was produced in Rabbit
<b>Clonality:</b>	Polyclonal
<b>Immunogen Species:</b>	CLDN1 / Claudin 1 antibody was raised against Human
<b>Antigen Type:</b>	Synthetic peptide
<b>Immunogen:</b>	CLDN1 / Claudin 1 antibody was raised against a synthetic peptide derived from the C-terminus of human Claudin 1.
<b>Specificity:</b>	Recognizes Claudin 1. Species cross-reactivity: Human, Monkey, Mouse, Canine, and Rat.
<b>Epitope:</b>	C-Terminus
<b>Reactivity:</b>	Human, Monkey, Mouse, Rat, Dog
<b>Purification:</b>	Immunoaffinity purified
<b>Presentation:</b>	10 mM PBS, pH 7.6, 0.2% BSA, 15 mM sodium azide
<b>Recommended Storage:</b>	+4°C or -20°C, Avoid repeated freezing and thawing.
<b>Usage Summary:</b>	Immunohistochemistry: LS-B2571 was validated for use in immunohistochemistry on a panel of 21 formalin-fixed, paraffin-embedded (FFPE) human tissues after heat induced antigen retrieval in pH 6.0 citrate buffer. After incubation with the primary antibody, slides were incubated with biotinylated secondary antibody, followed by alkaline phosphatase-streptavidin and chromogen. The stained slides were evaluated by a pathologist to confirm staining specificity. The optimal working concentration for LS-B2571 was determined to be 5 ug/ml. Western Blot: 2-4 ug/ml for 2 hrs at RT. Positive control: T47D cells, Skin or Breast carcinoma.
<b>Uses:</b>	IHC - Paraffin (5 µg/ml), Western blot, ELISA (Optimal dilution to be determined by the researcher)
<b>Size:</b>	125 µl
<b>Concentration:</b>	0.2 mg/ml

**Immunohistochemistry Image:**



Anti-CLDN1 / Claudin 1 antibody IHC of human liver. Immunohistochemistry of formalin-fixed, paraffin-embedded tissue after heat-induced antigen retrieval. Antibody LS-B2571 concentration 5 ug/ml.

**Requested From:**

Japan

Laboratory Reagent For In Vitro Research Use Only

Not for resale without prior written consent from LifeSpan BioSciences, Inc.

Created on 9/23/2014

© 2014 LifeSpan BioSciences