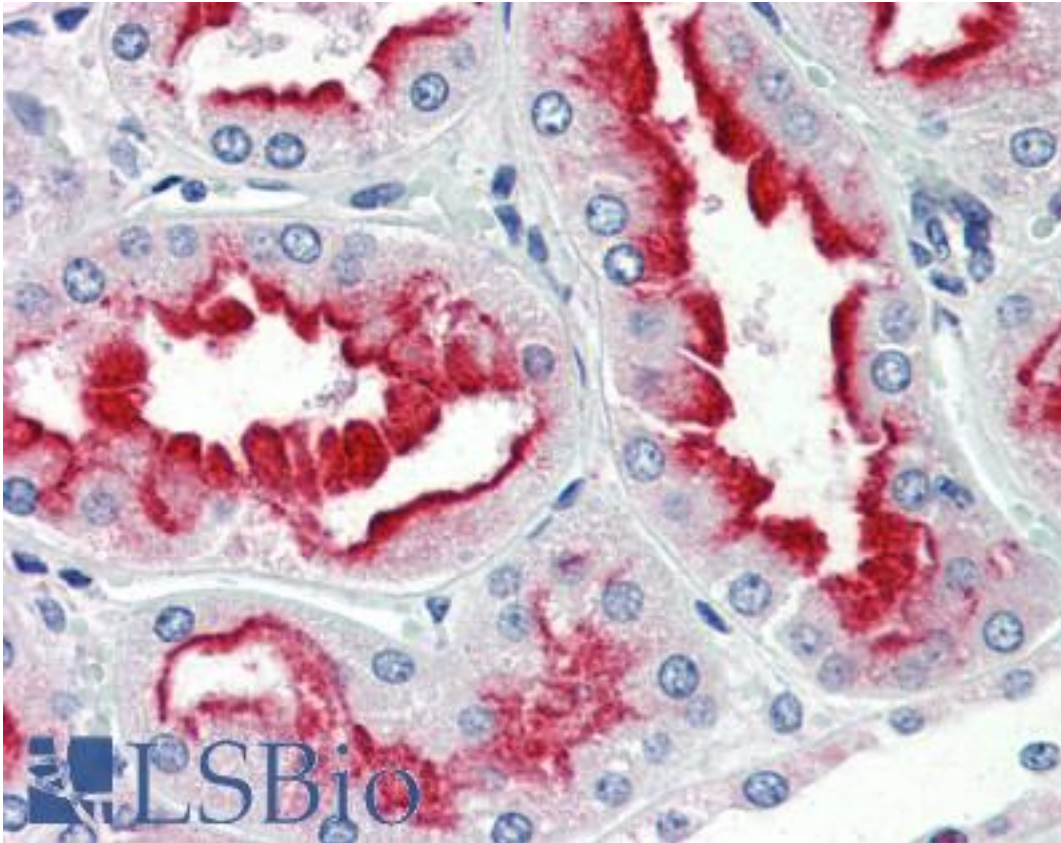


GJC1 / CX45 / Connexin 45 Mouse anti-Human Monoclonal (aa354-367) Antibody - LS-B2567 - LSBio	
CatalogID:	LS-B2567
Validation:	This antibody replaces catalog number LS-C14573. It has been validated for use in the following assays: IHC-P.
Target:	gap junction protein, gamma 1, 45kDa (GJC1)
Synonyms:	GJC1 Antibody, Connexin-45 Antibody, Connexin 45 Antibody, Gap junction alpha-7 protein Antibody, Gap junction gamma-1 protein Antibody, CX45 Antibody, Gap junction protein alpha-6 Antibody, GJA7 Antibody
Family / Subfamily:	Ion Channel / Connexin
Host	GJC1 antibody was produced in Mouse
Clonality:	Monoclonal
Isotype:	IgG1
Immunogen Species:	GJC1 / CX45 / Connexin 45 antibody was raised against Human
Antigen Type:	Synthetic peptide
Immunogen:	GJC1 / CX45 / Connexin 45 antibody was raised against synthetic peptide corresponding to aa354-367 of human connexin 45. (H-Gln-Ala-Tyr-Ser-His-Gln-Asn-Asn-Pro-His-Gly-Pro-Arg-Glu- Cys-OH) (KLH).
Specificity:	Recognizes human Connexin 45. Species cross-reactivity: rat. Species sequence homology: canine: 100% and mouse: 92%.
Epitope:	aa354-367
Reactivity:	Human, Mouse, Rat, Dog
Purification:	Protein A purified
Presentation:	PBS, pH 7.6, 0.1% sodium azide.
Recommended Storage:	Long term: -20°C; Short term: +4°C. Avoid repeat freeze-thaw cycles.
Usage Summary:	Immunohistochemistry: LS-B2567 was validated for use in immunohistochemistry on a panel of 21 formalin-fixed, paraffin-embedded (FFPE) human tissues after heat induced antigen retrieval in pH 6.0 citrate buffer. After incubation with the primary antibody, slides were incubated with biotinylated secondary antibody, followed by alkaline phosphatase-streptavidin and chromogen. The stained slides were evaluated by a pathologist to confirm staining specificity. The optimal working concentration for LS-B2567 was determined to be 10 ug/ml.
Uses:	IHC - Paraffin (10 µg/ml), ICC, Western blot (Optimal dilution to be determined by the researcher)
Size:	50 µg
Concentration:	1 mg/ml

Immunohistochemistry Image:



Anti-GJC1 / Connexin 45 antibody IHC of human kidney. Immunohistochemistry of formalin-fixed, paraffin-embedded tissue after heat-induced antigen retrieval. Antibody LS-B2567 concentration 10 ug/ml.

Requested From:

Japan

Laboratory Reagent For In Vitro Research Use Only

Not for resale without prior written consent from LifeSpan BioSciences, Inc.

Created on 9/23/2014

© 2014 LifeSpan BioSciences