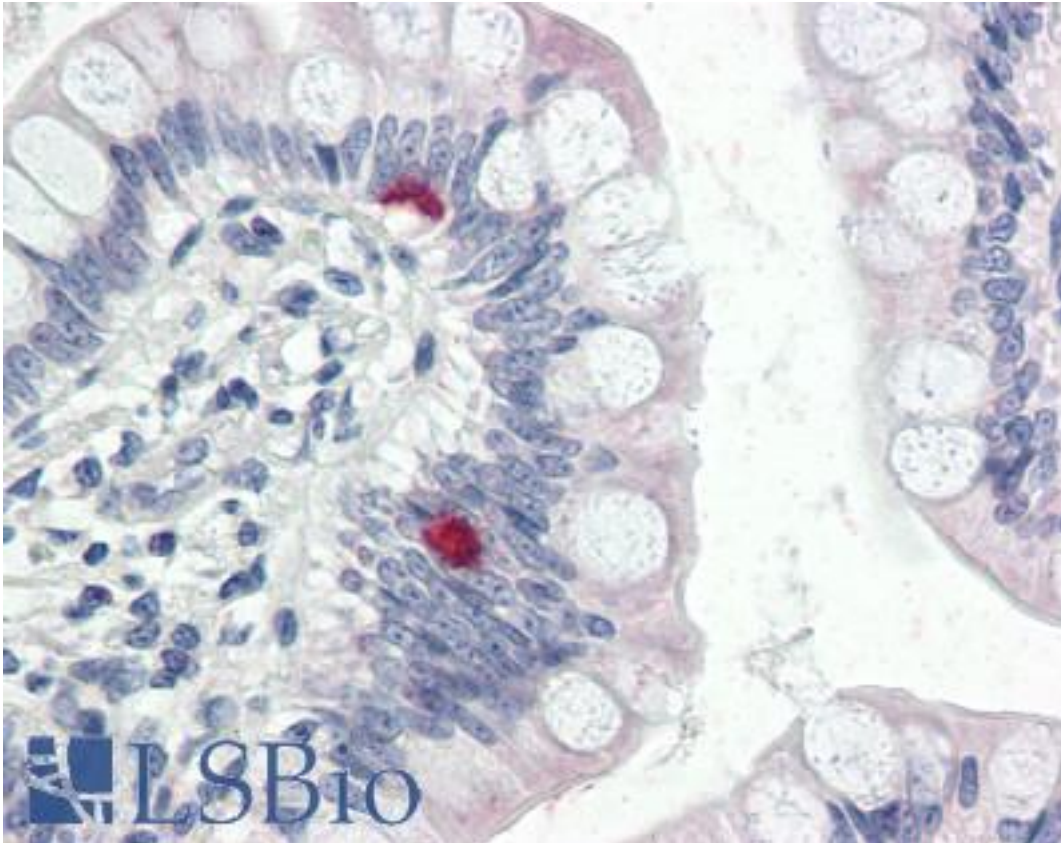


COPA / Xenin Rabbit anti-Human Polyclonal (aa1-19) Antibody - LS-B2566 - LSBio

CatalogID:	LS-B2566
Validation:	This antibody replaces catalog number LS-C14583. It has been validated for use in the following assays: IHC-P.
Target:	coatomer protein complex, subunit alpha (COPA)
Synonyms:	COPA Antibody, Alpha coat protein Antibody, Alpha-COP Antibody, Alpha COP I Antibody, Alpha-coat protein Antibody, Coatomer alpha subunit Antibody, Coatomer subunit alpha Antibody, HEPCOP Antibody, HEP-COP Antibody, Xenin Antibody
Host	COPA antibody was produced in Rabbit
Clonality:	Polyclonal
Isotype:	IgG
Immunogen Species:	COPA / Xenin antibody was raised against Human
Antigen Type:	Synthetic peptide
Immunogen:	COPA / Xenin antibody was raised against synthetic peptide: M(1)LTKFETKSARVKGLSFHP(19)C. Immunizing peptide corresponds to amino acid residues 1-19 from rat COP I alpha. Percent identity by BLAST analysis: Human, Gorilla, Monkey, Marmoset, Mouse, Rat, Hamster, Elephant, Bat, Bovine, Dog, Horse, Pig, Opossum, Chicken, Xenopus, Salmon, Stickleback, Pufferfish, Zebrafish, Seq squirt, Ant, Water flea, Tick (100%); Mosquito, Sea anemone, Rice, Beetle, Arabidopsis, Spikemoss (94%); Drosophila, Trichoplax, Grape, Castor bean (89%).
Specificity:	Detects rat coatomer-protein I alpha (COP I alpha). Species cross-reactivity: Human.
Epitope:	aa1-19
Reactivity:	Human, Gorilla, Monkey, Mouse, Rat, Bat, Bovine, Dog, Hamster, Horse, Pig, Chicken, Xenopus, Zebrafish
Predicted Reactivity:	Insect
Purification:	Immunoaffinity purified
Presentation:	PBS, 0.05% sodium azide.
Recommended Storage:	Long term: Add glycerol (40-50%) -20°C; Short term: +4°C
Usage Summary:	Immunohistochemistry: LS-B2566 was validated for use in immunohistochemistry on a panel of 21 formalin-fixed, paraffin-embedded (FFPE) human tissues after heat induced antigen retrieval in pH 6.0 citrate buffer. After incubation with the primary antibody, slides were incubated with biotinylated secondary antibody, followed by alkaline phosphatase-streptavidin and chromogen. The stained slides were evaluated by a pathologist to confirm staining specificity. The optimal working concentration for LS-B2566 was determined to be 5 ug/ml. Western Blot: 1 ug/ml, detects an ~140kD protein representing COPI alpha from PC-12 cell extract. Also detects an unidentified protein at ~100kD.
Uses:	IHC - Paraffin (5 µg/ml), ICC, Western blot (1 µg/ml) (Optimal dilution to be determined by the researcher)
Size:	50 µg

Immunohistochemistry Image:



Anti-COPA antibody IHC of human small intestine. Immunohistochemistry of formalin-fixed, paraffin-embedded tissue after heat-induced antigen retrieval. Antibody LS-B2566 concentration 5 ug/ml.

Requested From:

Japan

Laboratory Reagent For In Vitro Research Use Only

Not for resale without prior written consent from LifeSpan BioSciences, Inc.

Created on 9/23/2014

© 2014 LifeSpan BioSciences