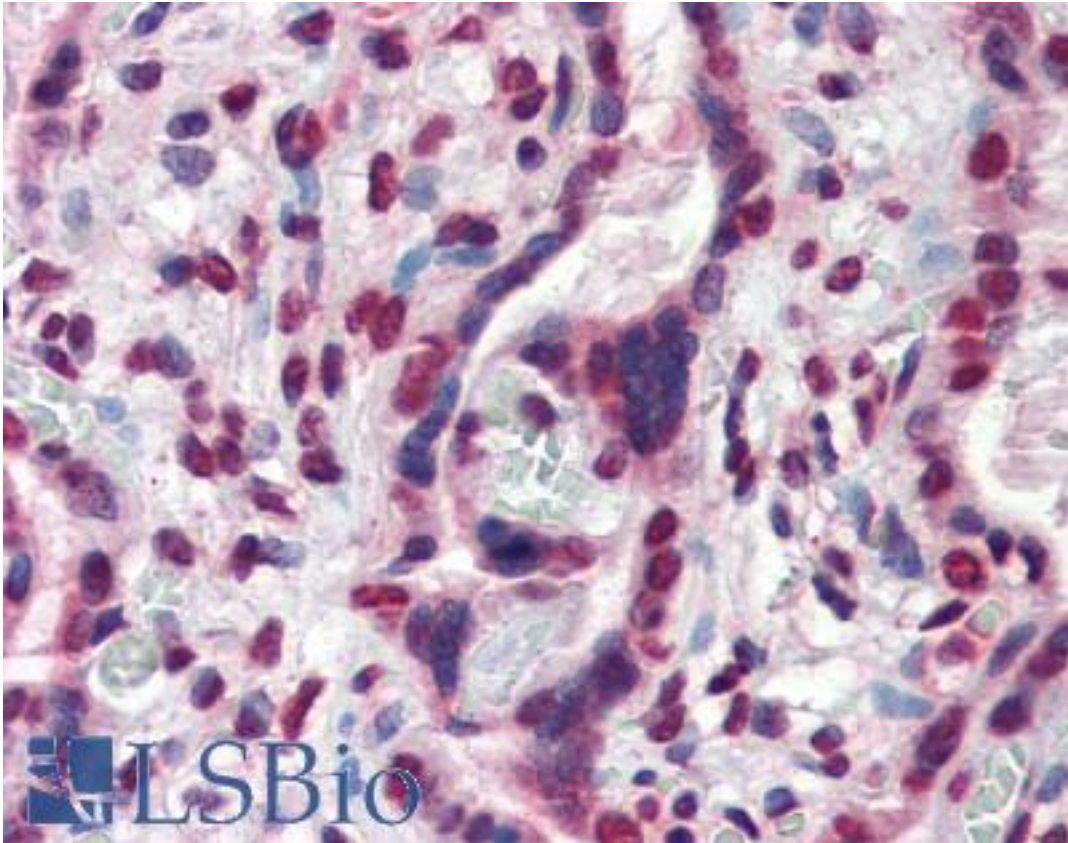


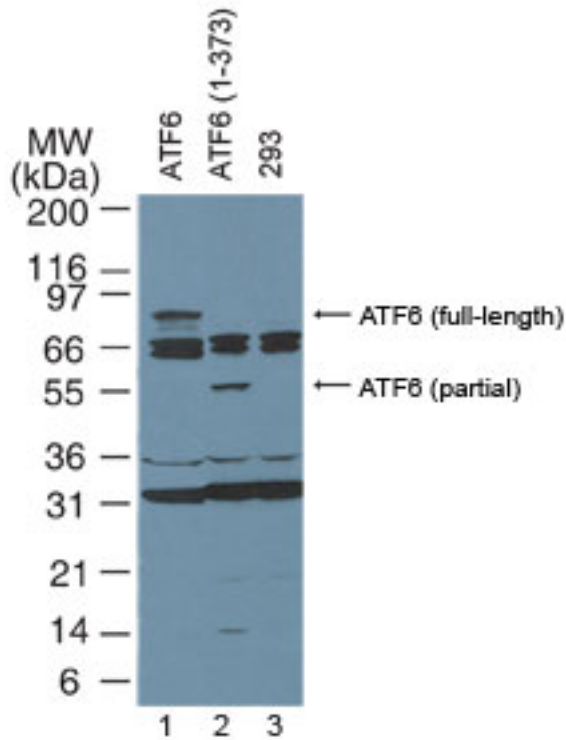
ATF6 Mouse anti-Human Monoclonal (aa1-273) (70B1413.1) Antibody - LS-B2564 - LSBio	
CatalogID:	LS-B2564
Validation:	This antibody replaces catalog number LS-C501. It has been validated for use in the following assays: IHC-P.
Target:	activating transcription factor 6 (ATF6)
Synonyms:	ATF6 Antibody, ATF6-alpha Antibody, ATF6A Antibody
Host	ATF6 antibody was produced in Mouse
Clonality:	Monoclonal
Isotype:	IgG1,k
Clone Name:	70B1413.1
Immunogen Species:	ATF6 antibody was raised against Human
Immunogen:	ATF6 antibody was raised against recombinant human ATF6.
Specificity:	A partial protein containing amino acids 1-273 of human ATF6.
Epitope:	aa1-273
Reactivity:	Human, Mouse, Rat, Hamster
Purification:	Protein G purified
Presentation:	PBS, 0.05% BSA, 0.05% sodium azide.
Recommended Storage:	Long term: -20°C; Short term: +4°C. Avoid repeat freeze-thaw cycles.
Usage Summary:	Immunohistochemistry: LS-B2564 was validated for use in immunohistochemistry on a panel of 21 formalin-fixed, paraffin-embedded (FFPE) human tissues after heat induced antigen retrieval in pH 6.0 citrate buffer. After incubation with the primary antibody, slides were incubated with biotinylated secondary antibody, followed by alkaline phosphatase-streptavidin and chromogen. The stained slides were evaluated by a pathologist to confirm staining specificity. The optimal working concentration for LS-B2564 was determined to be 10 ug/ml.
Uses:	IHC - Paraffin (10 µg/ml), ICC, Western blot (1 - 3 µg/ml), Chromatin Immunoprecipitation (Optimal dilution to be determined by the researcher)
Size:	50 µg
Concentration:	0.5 mg/ml

Immunohistochemistry Image:



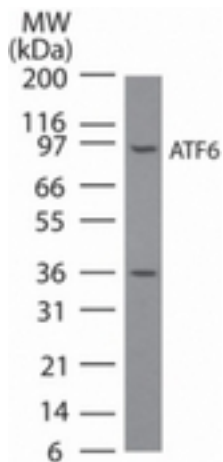
Anti-ATF6 antibody IHC of human placenta. Immunohistochemistry of formalin-fixed, paraffin-embedded tissue after heat-induced antigen retrieval. Antibody LS-B2564 concentration 10 ug/ml.

Western Blot Image:



Western blot analysis of ATF6. Lane 1, 293 cells transfected with full-length ATF6. Lane 2, 293 cells transfected with partial length ATF6 (amino acids 1-373). Lane 3, Untransfected 293 cells. Western blots were probed with 4 ug/ml of the ATF6 monoclonal antibody.

Western Blot Image:



Western blot of ATF6 in NIH3T3 cell lysate using antibody at 3 ug/ml. A band corresponding to full-length ATF6 was detected. We have not characterized the ~36 kD observed band; it may be an ATF6 breakdown/cleavage product.

Requested From:

Japan

Laboratory Reagent For In Vitro Research Use Only

Not for resale without prior written consent from LifeSpan BioSciences, Inc.

Created on 9/23/2014

© 2014 LifeSpan BioSciences