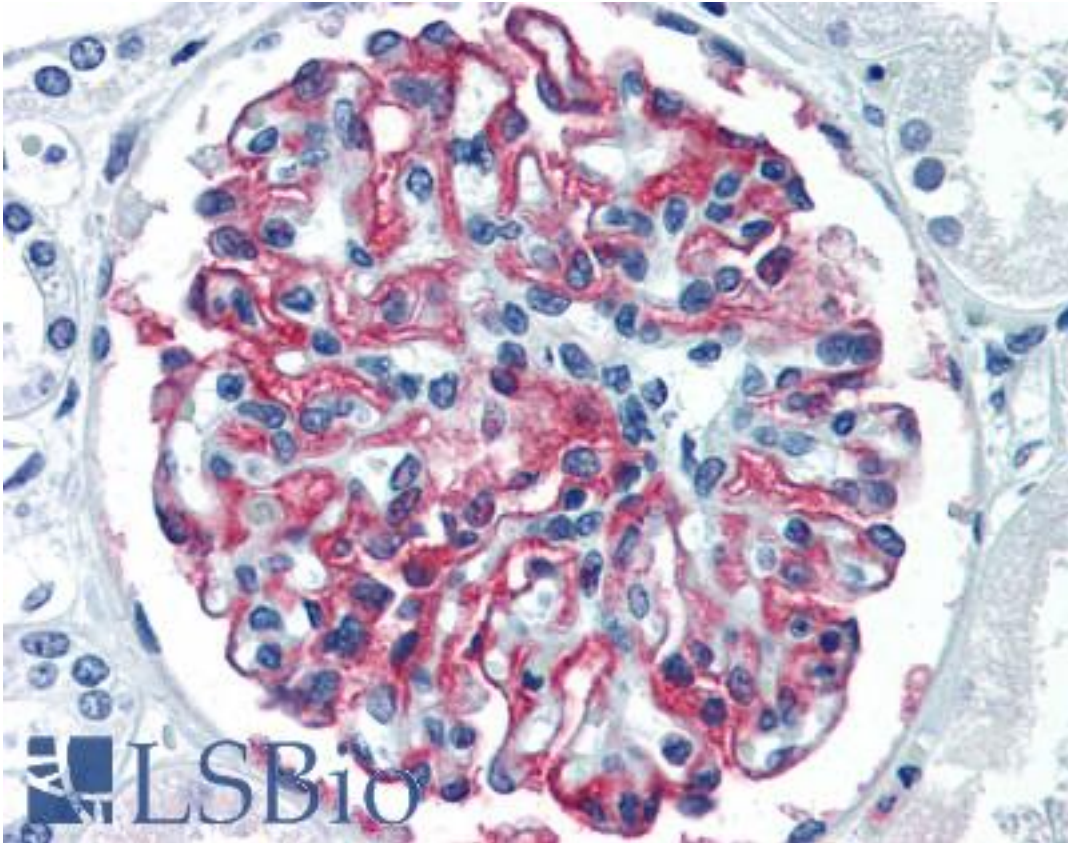


CR1 / CD35 Mouse anti-Human Monoclonal (Azide-free) (E11) Antibody - LS-B2556 - LSBio	
<b>CatalogID:</b>	LS-B2556
<b>Validation:</b>	This antibody replaces catalog number LS-C45218. It has been validated for use in the following assays: IHC-P.
<b>Target:</b>	complement component (3b/4b) receptor 1 (Knops blood group) (CR1)
<b>Synonyms:</b>	CR1 Antibody, C3b/C4b receptor Antibody, C3-binding protein Antibody, CD35 Antibody, C3BR Antibody, Knops blood group antigen Antibody, C4BR Antibody, CD35 antigen Antibody, Complement receptor type 1 Antibody, KN Antibody
<b>Family / Subfamily:</b>	Protease / Serine S1
<b>Host</b>	CR1 antibody was produced in Mouse
<b>Clonality:</b>	Monoclonal
<b>Isotype:</b>	IgG1
<b>Clone Name:</b>	E11
<b>Modifications:</b>	Azide-free
<b>Immunogen Species:</b>	CR1 / CD35 antibody was raised against Human
<b>Antigen Type:</b>	Cells
<b>Immunogen:</b>	CR1 / CD35 antibody was raised against human acute monocytic leukaemia cells.
<b>Specificity:</b>	Is a single chain cell surface glycoprotein which exists in four allotypic forms (A, B, C, D) of 190kD, 220kD, 160kD and 250kD respectively. The molecule is expressed by granulocytes, monocytes, B cells and some T cells. Functionally CD35 acts as a receptor for the C3b component of complement. Clone E11 has been reported to be suitable for use in Western Blot.
<b>Reactivity:</b>	Human, Baboon, Cynomolgus monkey, Rhesus monkey
<b>Purification:</b>	Protein A purified
<b>Presentation:</b>	PBS, pH 7.4. Sourced in TCS.
<b>Recommended Storage:</b>	+4°C or -20°C, Avoid repeated freezing and thawing.
<b>Usage Summary:</b>	Immunohistochemistry: LS-B2556 was validated for use in immunohistochemistry on a panel of 21 formalin-fixed, paraffin-embedded (FFPE) human tissues after heat induced antigen retrieval in pH 6.0 citrate buffer. After incubation with the primary antibody, slides were incubated with biotinylated secondary antibody, followed by alkaline phosphatase-streptavidin and chromogen. The stained slides were evaluated by a pathologist to confirm staining specificity. The optimal working concentration for LS-B2556 was determined to be 10 ug/ml. Flow Cytometry: Use 10 ul of the diluted antibody to label 10 <sup>6</sup> cells or 100 ul whole blood. Histology Positive Control Tissue: Tonsil.
<b>Uses:</b>	IHC - Paraffin (10 µg/ml), IHC - Frozen, Flow Cytometry (1:50 - 1:100) (Optimal dilution to be determined by the researcher)
<b>Size:</b>	50 µg
<b>Concentration:</b>	1 mg/ml

**Immunohistochemistry Image:**



Anti-CD35 antibody IHC of human kidney. Immunohistochemistry of formalin-fixed, paraffin-embedded tissue after heat-induced antigen retrieval. Antibody LS-B2556 concentration 10 ug/ml.

**Requested From:**

Japan

Laboratory Reagent For In Vitro Research Use Only

Not for resale without prior written consent from LifeSpan BioSciences, Inc.

Created on 9/23/2014

© 2014 LifeSpan BioSciences