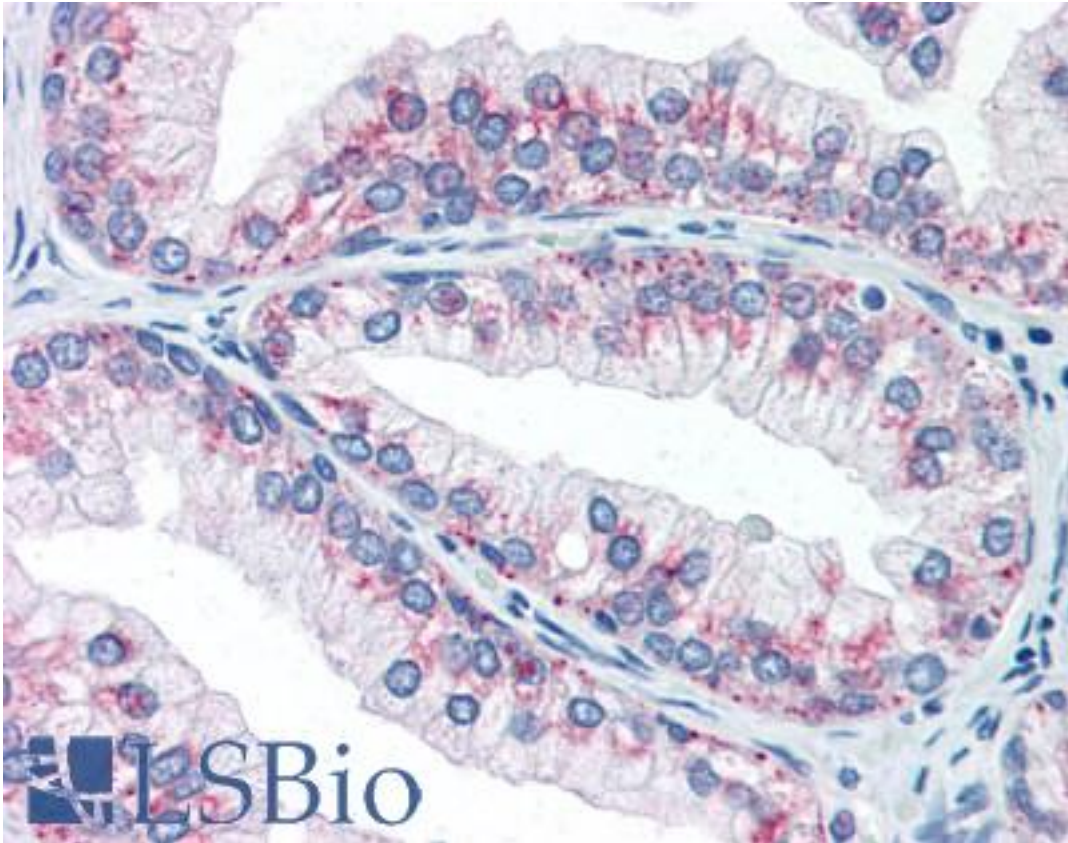


AKT1S1 / PRAS40 Mouse anti-Human Monoclonal Antibody - LS-B2541 - LSBio

CatalogID:	LS-B2541
Validation:	This antibody replaces catalog number LS-C17345. It has been validated for use in the following assays: IHC-P.
Target:	AKT1 substrate 1 (proline-rich) (AKT1S1)
Synonyms:	AKT1S1 Antibody, PRAS40 Antibody, Proline-rich AKT1 substrate 1 Antibody, Lobe Antibody
Host	AKT1S1 antibody was produced in Mouse
Clonality:	Monoclonal
Isotype:	IgG1,k
Immunogen Species:	AKT1S1 / PRAS40 antibody was raised against Human
Antigen Type:	Recombinant protein
Immunogen:	AKT1S1 / PRAS40 antibody was raised against recombinant full length human PRAS40 expressed in E. coli.
Specificity:	Recognizes human PRAS40. Reacts with a 40kD band. This band is absent from PRAS40 siRNA-treated HeLa cell extracts. Does not cross-react with mouse.
Reactivity:	Human
Purification:	Protein A/G purified
Presentation:	PBS, pH 7.2, 0.1% sodium azide, 1% BSA.
Recommended Storage:	Long term: Add glycerol (40-50%) -20°C; Short term: +4°C
Usage Summary:	Immunohistochemistry: LS-B2541 was validated for use in immunohistochemistry on a panel of 21 formalin-fixed, paraffin-embedded (FFPE) human tissues after heat induced antigen retrieval in pH 6.0 citrate buffer. After incubation with the primary antibody, slides were incubated with biotinylated secondary antibody, followed by alkaline phosphatase-streptavidin and chromogen. The stained slides were evaluated by a pathologist to confirm staining specificity. The optimal working concentration for LS-B2541 was determined to be 10 ug/ml. Suitable for use in Western Blot and immunoprecipitation.: Western Blot: 0.1-1 ug/ml. Positive control: HeLa cells; Jurkat cells.
Uses:	IHC - Paraffin (10 µg/ml), Western blot (0.1 - 1 µg/ml), Immunoprecipitation (Optimal dilution to be determined by the researcher)
Size:	50 µg

Immunohistochemistry Image:



Anti-AKT1S1 / PRAS40 antibody IHC of human prostate. Immunohistochemistry of formalin-fixed, paraffin-embedded tissue after heat-induced antigen retrieval. Antibody LS-B2541 concentration 10 ug/ml.

Requested From:

Japan

Laboratory Reagent For In Vitro Research Use Only

Not for resale without prior written consent from LifeSpan BioSciences, Inc.

Created on 9/23/2014

© 2014 LifeSpan BioSciences