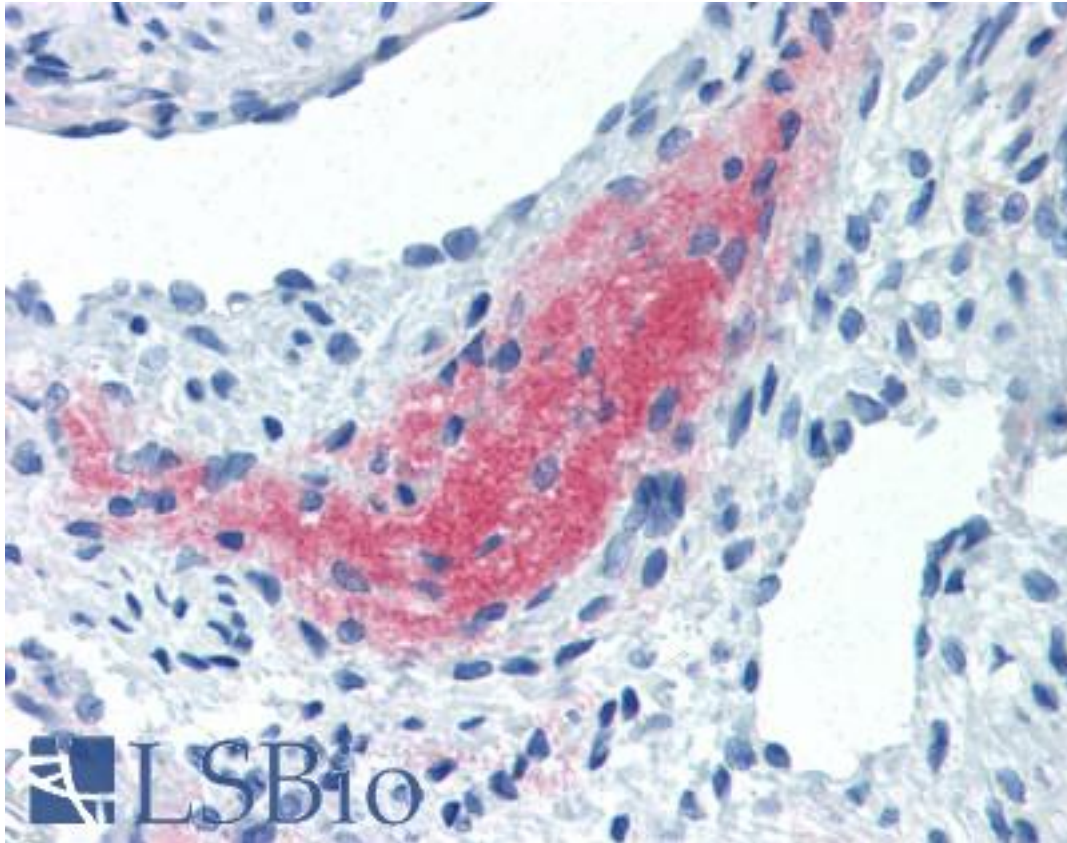


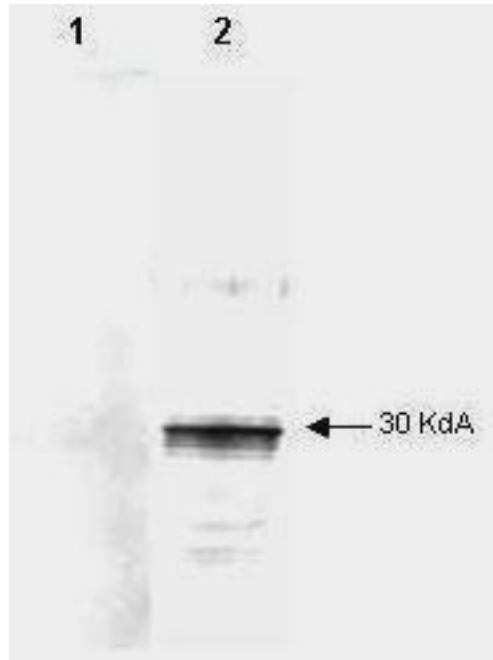
TGFB4 / LEFTY2 Mouse anti-Human Monoclonal (7C5G1H6H10) Antibody - LS-B2540 - LSBio	
CatalogID:	LS-B2540
Validation:	This antibody replaces catalog number LS-C18793. It has been validated for use in the following assays: IHC-P.
Target:	left-right determination factor 2 (LEFTY2)
Synonyms:	LEFTY2 Antibody, EBAF Antibody, LEFTYA Antibody, Protein lefty-2 Antibody, LEFTA Antibody, TGFB4 Antibody, Protein lefty-A Antibody, TGF-beta-4 Antibody
Family / Subfamily:	TGF beta / not assigned-TGF beta
Host	LEFTY2 antibody was produced in Mouse
Clonality:	Monoclonal
Isotype:	IgG2a,k
Clone Name:	7C5G1H6H10
Immunogen Species:	TGFB4 / LEFTY2 antibody was raised against Human
Immunogen:	TGFB4 / LEFTY2 antibody was raised against recombinant human LEFTY2.
Specificity:	A BALB/c mouse was immunized with a recombinant form of 6X HIS tagged human LEFTY. Hybridoma: Produced by the fusion between BALB/c mouse splenocytes and mouse Sp2/0 myeloma cells using conventional hybridoma technology.
Reactivity:	Human
Purification:	Protein A purified
Presentation:	0.02 M potassium phosphate, 0.15 M sodium chloride, pH 7.2, 0.01% sodium azide. Sourced in TCS.
Recommended Storage:	+4°C or -20°C, Avoid repeated freezing and thawing.
Usage Summary:	Immunohistochemistry: LS-B2540 was validated for use in immunohistochemistry on a panel of 21 formalin-fixed, paraffin-embedded (FFPE) human tissues after heat induced antigen retrieval in pH 6.0 citrate buffer. After incubation with the primary antibody, slides were incubated with biotinylated secondary antibody, followed by alkaline phosphatase-streptavidin and chromogen. The stained slides were evaluated by a pathologist to confirm staining specificity. The optimal working concentration for LS-B2540 was determined to be 10 ug/ml.
Uses:	IHC - Paraffin (10 µg/ml), Western blot, ELISA (Optimal dilution to be determined by the researcher)
Size:	50 µg
Concentration:	1 mg/ml

Immunohistochemistry Image:



Anti-LEFTY2 antibody IHC of human uterus, myometrium. Immunohistochemistry of formalin-fixed, paraffin-embedded tissue after heat-induced antigen retrieval. Antibody LS-B2540 concentration 10 ug/ml.

Western Blot Image:



Mab anti-Human LEFTY antibody (clone 7C5G1H6H10) is shown to detect by western blot partially purified recombinant 6X His tagged human LEFTY. Detection occurs after 1.0 ug of protein is loaded in each lane. The blot was incubated with a 1:2000 dilution of Mab anti-Human LEFTY at room temperature for 30 min followed by detection using IRDye800 labeled Goat-a-Mouse IgG [H&L] (610-132-121) diluted 1:1000. Lane 1 contains an unrelated 6X His tagged protein and shows that the antibody does not recognize the epitope tag. Lane 2 contains partially purified recombinant human LEFTY. The antibody may be used to detect endogenous human LEFTY. IRDye800 fluorescence image was captured using the Odyssey Infrared Imaging System developed by LI-COR. IRDye is a trademark of LI-COR, Inc. Other detection systems will yield similar results.

Western Blot Image:



Mab anti-Human LEFTY antibody (clone 7C5G1H6H10) is shown to detect by western blot partially purified recombinant 6X His tagged human LEFTY. 1.0 mg of protein of protein was loaded per lane. The blot was incubated with a 1:2000 dilution of Mab anti-Human LEFTY.

Requested From:

Japan

Laboratory Reagent For In Vitro Research Use Only

Not for resale without prior written consent from LifeSpan BioSciences, Inc.

Created on 9/23/2014

© 2014 LifeSpan BioSciences