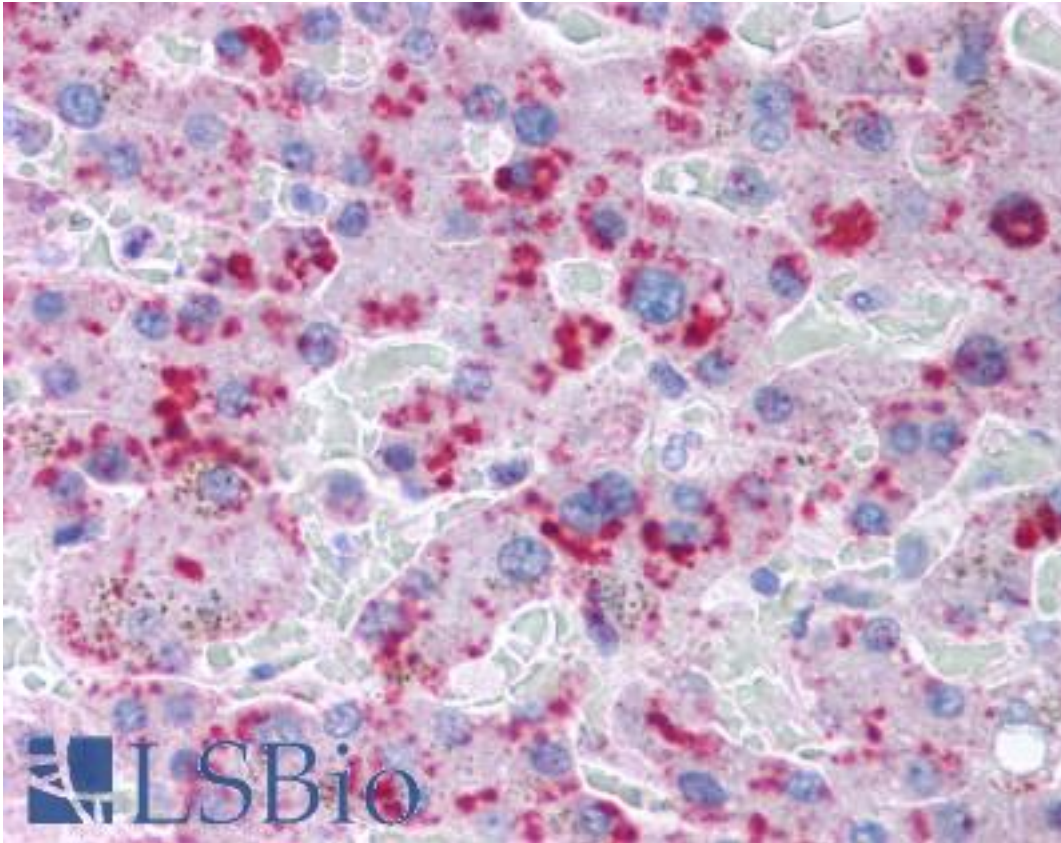


MLXIPL / CHREBP Rabbit anti-Human Polyclonal (aa50-150) Antibody - LS-B254 - LSBio	
<b>CatalogID:</b>	LS-B254
<b>Validation:</b>	This antibody replaces catalog number LS-C2547. It has been validated for use in the following assays: IHC.
<b>Target:</b>	MLX interacting protein-like (MLXIPL)
<b>Synonyms:</b>	MLXIPL Antibody, CHREBP Antibody, MIO Antibody, MLX interactor Antibody, MLX interacting protein-like Antibody, MLX-interacting protein-like Antibody, MONDOB Antibody, WBSCR14 Antibody, WS-bHLH Antibody, BHLHd14 Antibody
<b>Host</b>	MLXIPL antibody was produced in Rabbit
<b>Clonality:</b>	Polyclonal
<b>Immunogen Species:</b>	MLXIPL / CHREBP antibody was raised against Human
<b>Antigen Type:</b>	Synthetic peptide
<b>Immunogen:</b>	MLXIPL / CHREBP antibody was raised against an internal synthetic peptide made to the human ChREBP protein sequence (between residues 50-150). [NCBI# NP_116569.1, isoform 1/alpha]. Percent identity by BLAST analysis: Mouse (93%); Rat (87%).
<b>Specificity:</b>	ChREBP.
<b>Epitope:</b>	aa50-150
<b>Reactivity:</b>	Human
<b>Predicted Reactivity:</b>	Mouse
<b>Purification:</b>	Immunoaffinity purified
<b>Presentation:</b>	Contains 0.1% sodium azide
<b>Recommended Storage:</b>	+4°C or -20°C, Avoid repeated freezing and thawing.
<b>Usage Summary:</b>	Immunohistochemistry: LS-B254 was validated for use in immunohistochemistry on a panel of 21 formalin-fixed, paraffin-embedded (FFPE) human tissues after heat induced antigen retrieval in pH 6.0 citrate buffer. After incubation with the primary antibody, slides were incubated with biotinylated secondary antibody, followed by alkaline phosphatase-streptavidin and chromogen. The stained slides were evaluated by a pathologist to confirm staining specificity. The optimal working concentration for LS-B254 was determined to be 5 ug/ml.
<b>Uses:</b>	IHC - Paraffin (5 µg/ml), Immunofluorescence (1:100 - 1:500) (Optimal dilution to be determined by the researcher)
<b>Size:</b>	50 µl
<b>Concentration:</b>	1 mg/ml

**Immunohistochemistry Image:**



Anti-MLXIPL / CHREBP antibody IHC of human liver. Immunohistochemistry of formalin-fixed, paraffin-embedded tissue after heat-induced antigen retrieval. Antibody LS-B254 concentration 5 ug/ml.

**Requested From:**

Japan

Laboratory Reagent For In Vitro Research Use Only

Not for resale without prior written consent from LifeSpan BioSciences, Inc.

Created on 9/23/2014

© 2014 LifeSpan BioSciences