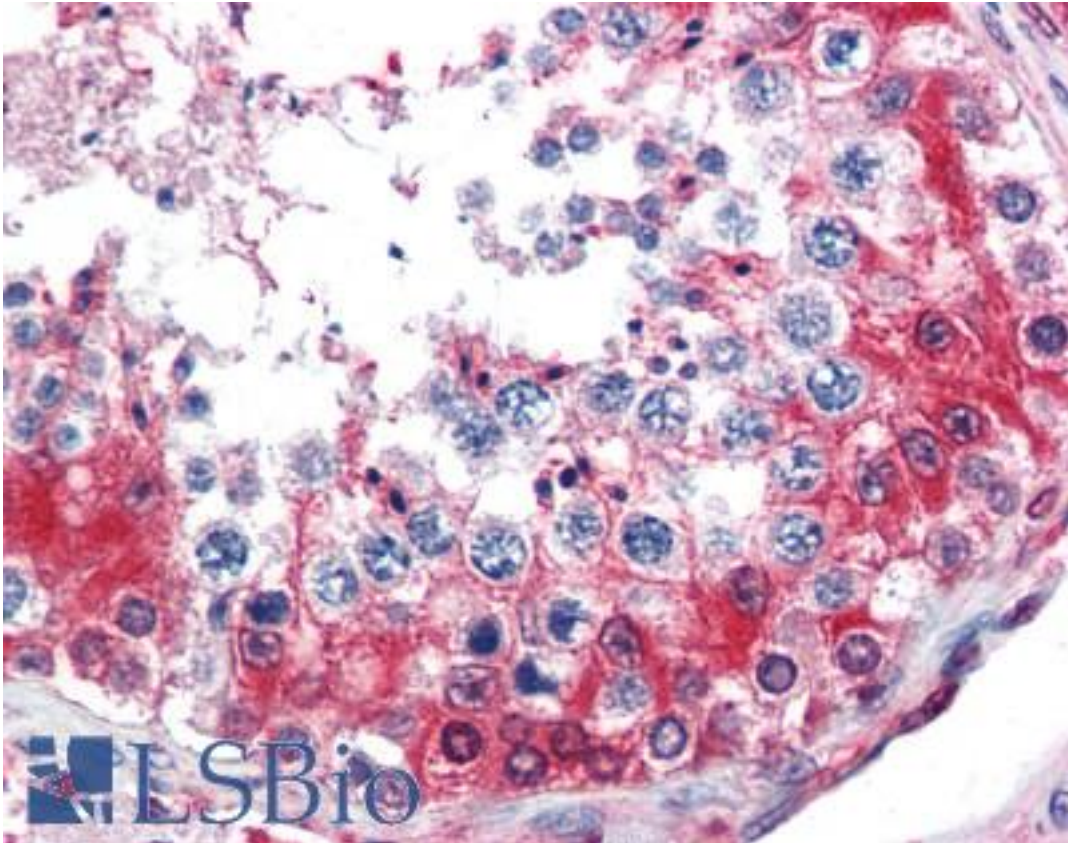


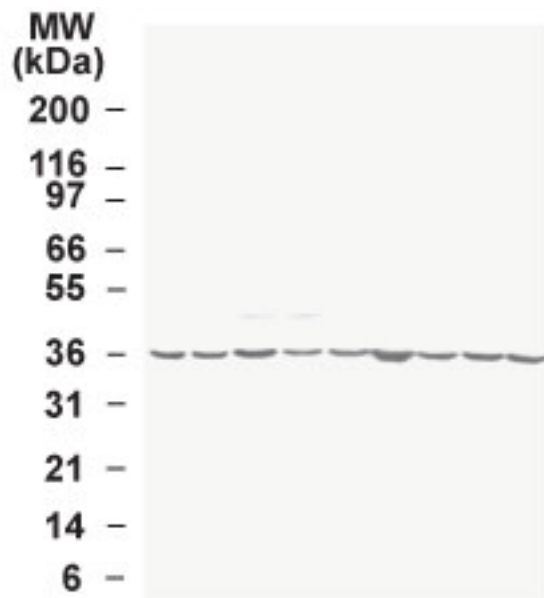
GAPDH Rabbit anti-Human Polyclonal (aa73-87) Antibody - LS-B2536 - LSBio	
CatalogID:	LS-B2536
Validation:	This antibody replaces catalog number LS-C19379. It has been validated for use in the following assays: IHC-P.
Target:	glyceraldehyde-3-phosphate dehydrogenase (GAPDH)
Synonyms:	GAPDH Antibody, A1 40 kd subunit Antibody, Activator 1 40 kd subunit Antibody, G3PD Antibody, GAPD Antibody, G3pdh Antibody, Rfc40 Antibody, Rf-c 40 kd subunit Antibody
Host	GAPDH antibody was produced in Rabbit
Clonality:	Polyclonal
Immunogen Species:	GAPDH antibody was raised against Human
Immunogen:	GAPDH antibody was raised against amino acids 73-87 (PITIFQERDPSKIKW) of glyceraldehyde 3-phosphate dehydrogenase protein were used as the immunogen. Percent identity by BLAST analysis: Human, Gorilla, Orangutan, Gibbon, Baboon, Monkey, Marmoset (100%); Pig (93%); Mouse, Rat, Cat, Chicken, Armadillo, Xenopus (87%).
Specificity:	Amino acids 73-87 (PITIFQERDPSKIKW) of glyceraldehyde 3-phosphate dehydrogenase protein was used as the immunogen.
Epitope:	aa73-87
Reactivity:	Human, Gorilla, Orangutan, Gibbon, Monkey
Predicted Reactivity:	Pig
Purification:	Protein G purified
Presentation:	PBS, 0.05% BSA, 0.05% sodium azide.
Recommended Storage:	Long term: -20°C; Short term: +4°C. Avoid repeat freeze-thaw cycles.
Usage Summary:	Immunohistochemistry: LS-B2536 was validated for use in immunohistochemistry on a panel of 21 formalin-fixed, paraffin-embedded (FFPE) human tissues after heat induced antigen retrieval in pH 6.0 citrate buffer. After incubation with the primary antibody, slides were incubated with biotinylated secondary antibody, followed by alkaline phosphatase-streptavidin and chromogen. The stained slides were evaluated by a pathologist to confirm staining specificity. The optimal working concentration for LS-B2536 was determined to be 5 ug/ml.
Uses:	IHC - Paraffin (5 µg/ml), Western blot (Optimal dilution to be determined by the researcher)
Size:	50 µg
Concentration:	0.5 mg/ml

Immunohistochemistry Image:



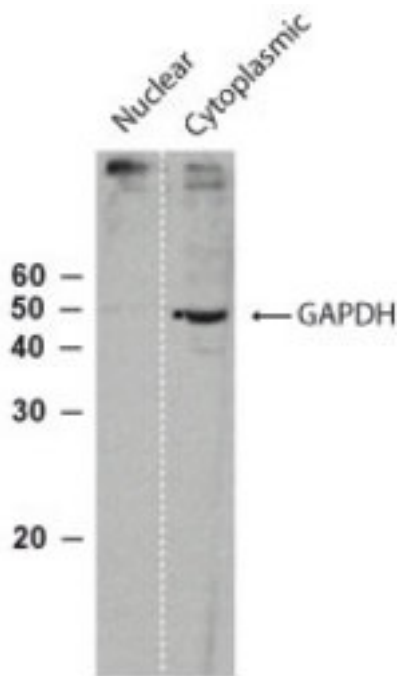
Anti-GAPDH antibody IHC of human testis. Immunohistochemistry of formalin-fixed, paraffin-embedded tissue after heat-induced antigen retrieval. Antibody LS-B2536 concentration 5 ug/ml.

Western Blot Image:



Western blot of GAPDH in the multiple human tumor cell line lysate INSTA-Blot using antibody at 0.25 ug/ml.

Western Blot Image:



Western blot of GAPDH using antibody at 1:500 in nuclear and cytoplasmic fractions made from *Drosophila* head extracts.

Requested From:

Japan

Laboratory Reagent For In Vitro Research Use Only

Not for resale without prior written consent from LifeSpan BioSciences, Inc.

Created on 9/23/2014

© 2014 LifeSpan BioSciences