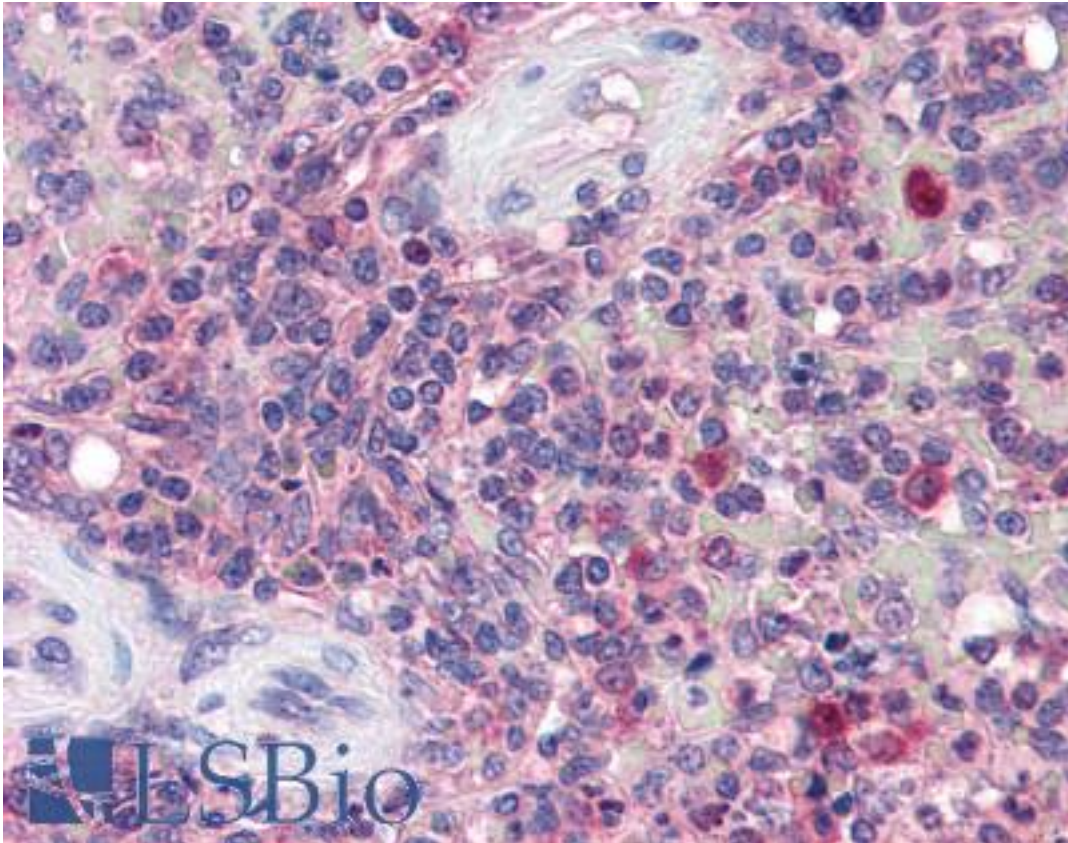


KPNB1 / Importin Beta Goat anti-Human Polyclonal (C-Terminus) Antibody - LS-B2533 - LSBio	
<b>CatalogID:</b>	LS-B2533
<b>Validation:</b>	This antibody replaces catalog number LS-C55023. It has been validated for use in the following assays: IHC-P.
<b>Target:</b>	karyopherin (importin) beta 1 (KPNB1)
<b>Synonyms:</b>	KPNB1 Antibody, Importin 90 Antibody, Importin Beta Antibody, Importin beta-1 subunit Antibody, IPO1 Antibody, IPOB Antibody, NTF97 Antibody, Impnb Antibody, Importin 1 Antibody, Karyopherin subunit beta-1 Antibody, Nuclear factor p97 Antibody, PTAC97 Antibody, IMB1 Antibody, Importin subunit beta-1 Antibody, Importin-90 Antibody, Karyopherin (importin) beta 1 Antibody
<b>Host</b>	KPNB1 antibody was produced in Goat
<b>Clonality:</b>	Polyclonal
<b>Immunogen Species:</b>	KPNB1 / Importin Beta antibody was raised against Human
<b>Antigen Type:</b>	Synthetic peptide
<b>Immunogen:</b>	KPNB1 / Importin Beta antibody was raised against synthetic peptide C-RRSKTNKAKTLAT from the C-terminus of human KPNB1 (NP_002256.2). Percent identity by BLAST analysis: Human, Gorilla, Gibbon, Monkey, Marmoset, Mouse, Rat, Elephant, Panda, Bovine, Dog, Bat, Horse, Rabbit, Pig (100%); Opossum, Chicken, Lizard, Xenopus (92%); Stickleback, Pufferfish, Zebrafish (85%).
<b>Specificity:</b>	Human KPNB1.
<b>Epitope:</b>	C-Terminus
<b>Reactivity:</b>	Human, Gorilla, Gibbon, Monkey, Mouse, Rat, Bat, Bovine, Dog, Horse, Pig, Rabbit
<b>Predicted Reactivity:</b>	Chicken, Xenopus
<b>Purification:</b>	Immunoaffinity purified
<b>Presentation:</b>	Tris-buffered saline, pH 7.3, 0.5% BSA, 0.02% sodium azide
<b>Recommended Storage:</b>	Store at -20°C. Minimize freezing and thawing.
<b>Usage Summary:</b>	Immunohistochemistry: LS-B2533 was validated for use in immunohistochemistry on a panel of 21 formalin-fixed, paraffin-embedded (FFPE) human tissues after heat induced antigen retrieval in pH 6.0 citrate buffer. After incubation with the primary antibody, slides were incubated with biotinylated secondary antibody, followed by alkaline phosphatase-streptavidin and chromogen. The stained slides were evaluated by a pathologist to confirm staining specificity. The optimal working concentration for LS-B2533 was determined to be 5 ug/ml.
<b>Uses:</b>	IHC - Paraffin (5 µg/ml), Western blot (1:32000) & (0.03 - 0.1 µg/ml), ELISA (1:32000) (Optimal dilution to be determined by the researcher)
<b>Size:</b>	50 µg
<b>Concentration:</b>	0.5 mg/ml

**Immunohistochemistry Image:**



Anti-KPNB1 antibody IHC of human spleen. Immunohistochemistry of formalin-fixed, paraffin-embedded tissue after heat-induced antigen retrieval. Antibody LS-B2533 concentration 5 ug/ml.

**Western Blot Image:**



Antibody (0.03 ug/ml) staining of Daudi cell lysate (35 ug protein in RIPA buffer). Primary incubation was 1 hour. Detected by chemiluminescence.

**Requested From:**

Japan

Laboratory Reagent For In Vitro Research Use Only

Not for resale without prior written consent from LifeSpan BioSciences, Inc.

Created on 9/23/2014

© 2014 LifeSpan BioSciences