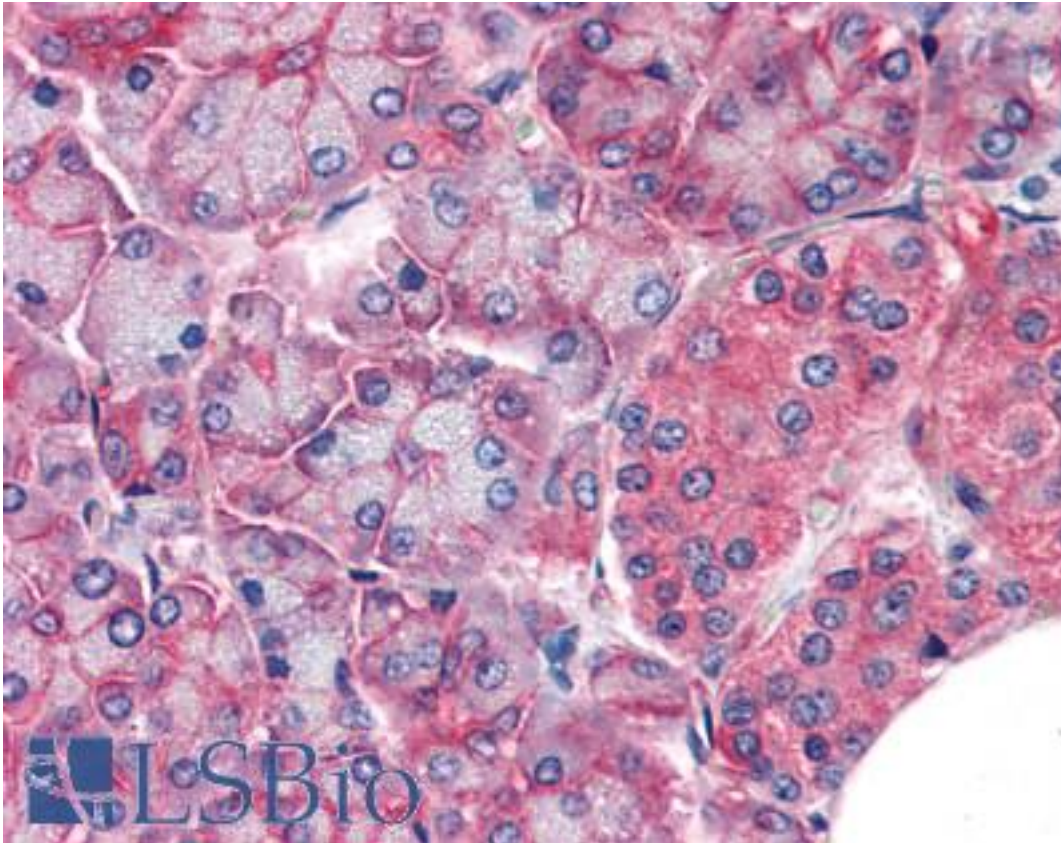


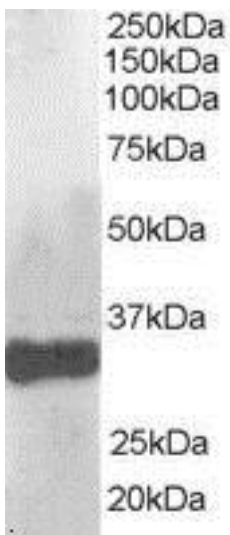
CLDN14 / Claudin 14 Goat anti-Human Polyclonal (C-Terminus) Antibody - LS-B2532 - LSBio	
CatalogID:	LS-B2532
Validation:	This antibody replaces catalog number LS-C20144. It has been validated for use in the following assays: IHC-P.
Target:	claudin 14 (CLDN14)
Synonyms:	CLDN14 Antibody, Claudin 14 Antibody, DFNB29 Antibody, Claudin-14 Antibody
Family / Subfamily:	Claudin / not assigned-Claudin
Host	CLDN14 antibody was produced in Goat
Clonality:	Polyclonal
Immunogen Species:	CLDN14 / Claudin 14 antibody was raised against Human
Antigen Type:	Synthetic peptide
Immunogen:	CLDN14 / Claudin 14 antibody was raised against synthetic peptide C-SATHSGYRLNDYV from the C-terminus of human CLDN14 / Claudin 14 (NP_036262.1). Percent identity by BLAST analysis: Human, Gorilla, Gibbon, Monkey, Marmoset, Rabbit (100%); Mouse, Rat, Hamster, Elephant, Bovine, Horse, Opossum, Chicken, Lizard (92%); Panda, Dog, Pig (85%).
Specificity:	Human CLDN14 / Claudin 14. Reported variants represent identical protein (NP_036262.1; NP_652763.1; NP_001139551.1; NP_001139550.1 and NP_001139549.1).
Epitope:	C-Terminus
Reactivity:	Human, Gorilla, Gibbon, Monkey, Rabbit
Predicted Reactivity:	Mouse, Rat, Bovine, Hamster, Horse, Chicken
Purification:	Immunoaffinity purified
Presentation:	Tris-buffered saline, pH 7.3, 0.5% BSA, 0.02% sodium azide
Recommended Storage:	Store at -20°C. Minimize freezing and thawing.
Usage Summary:	Immunohistochemistry: LS-B2532 was validated for use in immunohistochemistry on a panel of 21 formalin-fixed, paraffin-embedded (FFPE) human tissues after heat induced antigen retrieval in pH 6.0 citrate buffer. After incubation with the primary antibody, slides were incubated with biotinylated secondary antibody, followed by alkaline phosphatase-streptavidin and chromogen. The stained slides were evaluated by a pathologist to confirm staining specificity. The optimal working concentration for LS-B2532 was determined to be 5 µg/ml.
Uses:	IHC - Paraffin (5 µg/ml), Western blot (1 - 3 µg/ml), ELISA (1:128000) (Optimal dilution to be determined by the researcher)
Size:	50 µg
Concentration:	0.5 mg/ml

Immunohistochemistry Image:



Anti-CLDN14 / Claudin 14 antibody IHC of human pancreas. Immunohistochemistry of formalin-fixed, paraffin-embedded tissue after heat-induced antigen retrieval. Antibody LS-B2532 concentration 5 ug/ml.

Western Blot Image:



(1 ug/ml) Staining of Human Liver lysate (35 ug protein in RIPA buffer). Primary incubation was 1 hour. Detected by chemiluminescence.

Requested From:

Japan

Laboratory Reagent For In Vitro Research Use Only

Not for resale without prior written consent from LifeSpan BioSciences, Inc.

Created on 9/23/2014

© 2014 LifeSpan BioSciences