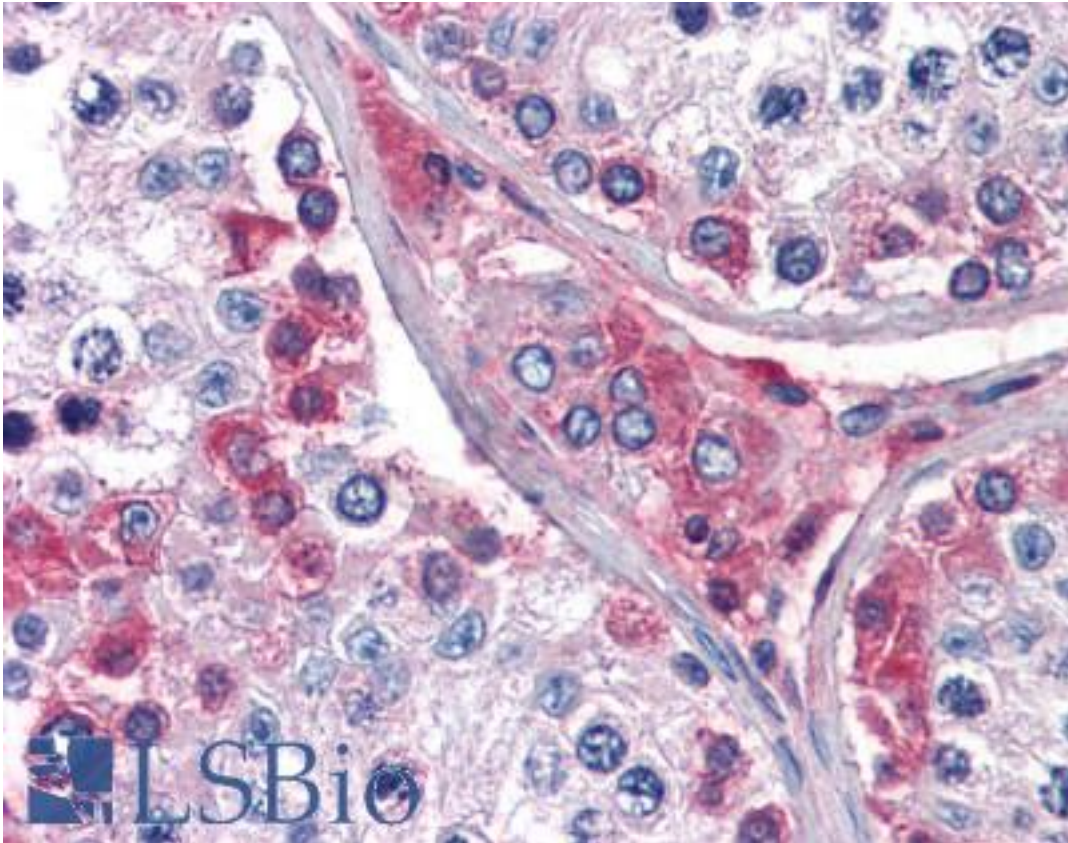


CTSK / Cathepsin K Rabbit anti-Rat Polyclonal Antibody - LS-B2531 - LSBio	
<b>CatalogID:</b>	LS-B2531
<b>Validation:</b>	This antibody replaces catalog number LS-C48355. It has been validated for use in the following assays: IHC-P.
<b>Target:</b>	cathepsin K (CTSK)
<b>Synonyms:</b>	CTSK Antibody, Cathepsin K Antibody, Cathepsin K (pyncnodysostosis) Antibody, Cathepsin O1 Antibody, Cathepsin O2 Antibody, Cathepsin X Antibody, CTSO2 Antibody, PKND Antibody, Procathepsin K Antibody, PYCD Antibody, Cathepsin O Antibody, CTSO2 Antibody, CTSO1 Antibody
<b>Family / Subfamily:</b>	Protease / Cysteine C1
<b>Host</b>	CTSK antibody was produced in Rabbit
<b>Clonality:</b>	Polyclonal
<b>Immunogen Species:</b>	CTSK / Cathepsin K antibody was raised against Rat
<b>Antigen Type:</b>	Synthetic peptide
<b>Immunogen:</b>	CTSK / Cathepsin K antibody was raised against synthetic peptide surrounding amino acid 321 of rat cathepsin K.
<b>Specificity:</b>	Detects 43 kD cathepsin K of human, mouse, and rat origin.
<b>Reactivity:</b>	Rat, Human, Mouse
<b>Purification:</b>	Protein A purified
<b>Presentation:</b>	PBS, pH 7.2, 30% glycerol, 0.5% BSA, 0.01% Thimerosal.
<b>Recommended Storage:</b>	Long term: -70°C; Short term: -20°C
<b>Usage Summary:</b>	Immunohistochemistry: LS-B2531 was validated for use in immunohistochemistry on a panel of 21 formalin-fixed, paraffin-embedded (FFPE) human tissues after heat induced antigen retrieval in pH 6.0 citrate buffer. After incubation with the primary antibody, slides were incubated with biotinylated secondary antibody, followed by alkaline phosphatase-streptavidin and chromogen. The stained slides were evaluated by a pathologist to confirm staining specificity. The optimal working concentration for LS-B2531 was determined to be 5 ug/ml.
<b>Uses:</b>	IHC - Paraffin (5 µg/ml), Western blot (0.5 - 4 µg/ml), Immunoprecipitation (Optimal dilution to be determined by the researcher)
<b>Size:</b>	50 µg
<b>Concentration:</b>	0.5 mg/ml

**Immunohistochemistry Image:**



Anti-CTSK / Cathepsin K antibody IHC of human testis. Immunohistochemistry of formalin-fixed, paraffin-embedded tissue after heat-induced antigen retrieval. Antibody LS-B2531 concentration 5 ug/ml.

**Requested From:**

Japan

Laboratory Reagent For In Vitro Research Use Only

Not for resale without prior written consent from LifeSpan BioSciences, Inc.

Created on 9/23/2014

© 2014 LifeSpan BioSciences