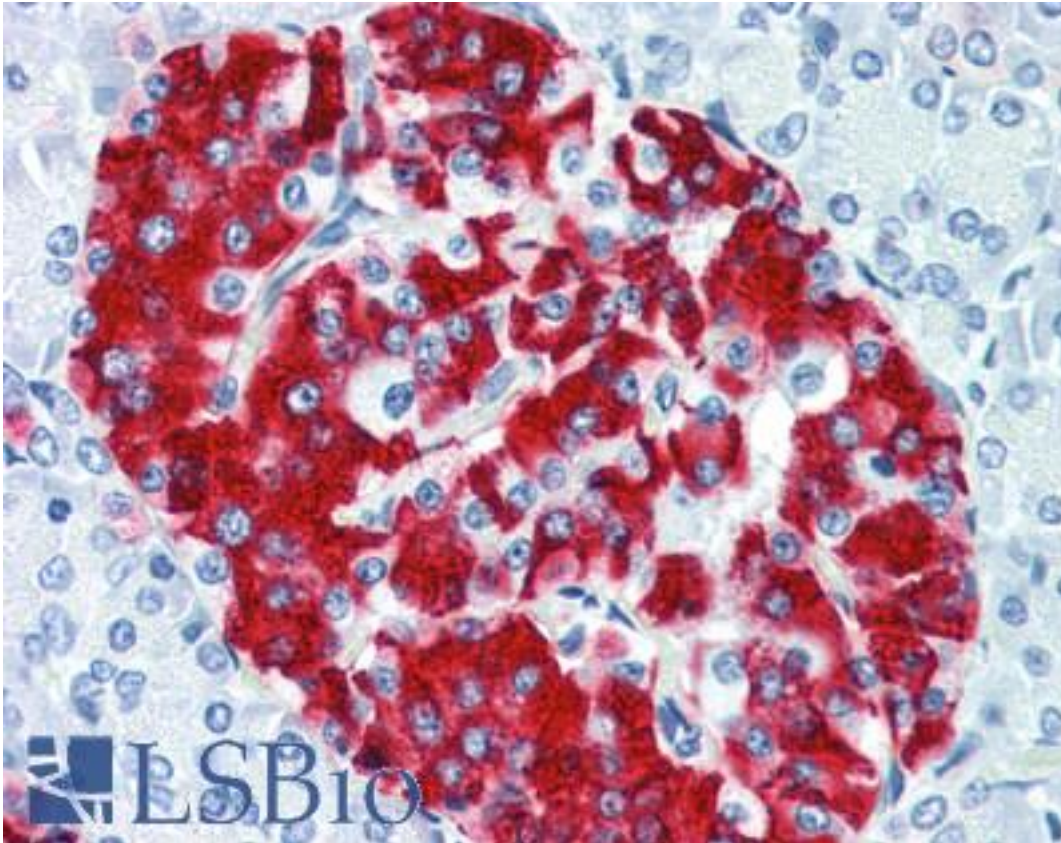


Insulin Rabbit anti-Human Polyclonal Antibody - LS-B2526 - LSBio	
CatalogID:	LS-B2526
Validation:	This antibody replaces catalog number LS-C36888. It has been validated for use in the following assays: IHC-P.
Target:	insulin
Synonyms:	INS Antibody, IRDN Antibody, IDDM2 Antibody, Preproinsulin Antibody, ILPR Antibody, Insulin Antibody, MODY10 Antibody, Proinsulin Antibody
Family / Subfamily:	Hormone / not assigned-Hormone
Host	INS antibody was produced in Rabbit
Clonality:	Polyclonal
Isotype:	IgG
Immunogen Species:	Insulin antibody was raised against Human
Antigen Type:	Synthetic peptide
Immunogen:	Insulin antibody was raised against synthetic peptide (KLH-coupled) derived from the sequence of human insulin.
Specificity:	Recognizes endogenous levels of total human insulin protein.
Reactivity:	Human, Mouse, Rat
Purification:	Immunoaffinity purified
Presentation:	10 mM HEPES, pH 7.5, 150 mM sodium chloride, 100 ug/ml BSA, 50% glycerol.
Recommended Storage:	Long term: -20°C; Short term: +4°C. Avoid repeat freeze-thaw cycles.
Usage Summary:	Immunohistochemistry: LS-B2526 was validated for use in immunohistochemistry on a panel of 21 formalin-fixed, paraffin-embedded (FFPE) human tissues after heat induced antigen retrieval in pH 6.0 citrate buffer. After incubation with the primary antibody, slides were incubated with biotinylated secondary antibody, followed by alkaline phosphatase-streptavidin and chromogen. The stained slides were evaluated by a pathologist to confirm staining specificity. The optimal working concentration for LS-B2526 was determined to be 1:100.
Uses:	IHC - Paraffin (1:100), ICC, Immunofluorescence, Flow Cytometry, ELISA (Optimal dilution to be determined by the researcher)
Size:	50 µl
Concentration:	0.02 mg/ml

Immunohistochemistry Image:



Anti-Insulin antibody IHC of human pancreas. Immunohistochemistry of formalin-fixed, paraffin-embedded tissue after heat-induced antigen retrieval. Antibody LS-B2526 dilution 1:100.

Requested From:

Japan

Laboratory Reagent For In Vitro Research Use Only

Not for resale without prior written consent from LifeSpan BioSciences, Inc.

Created on 9/23/2014

© 2014 LifeSpan BioSciences