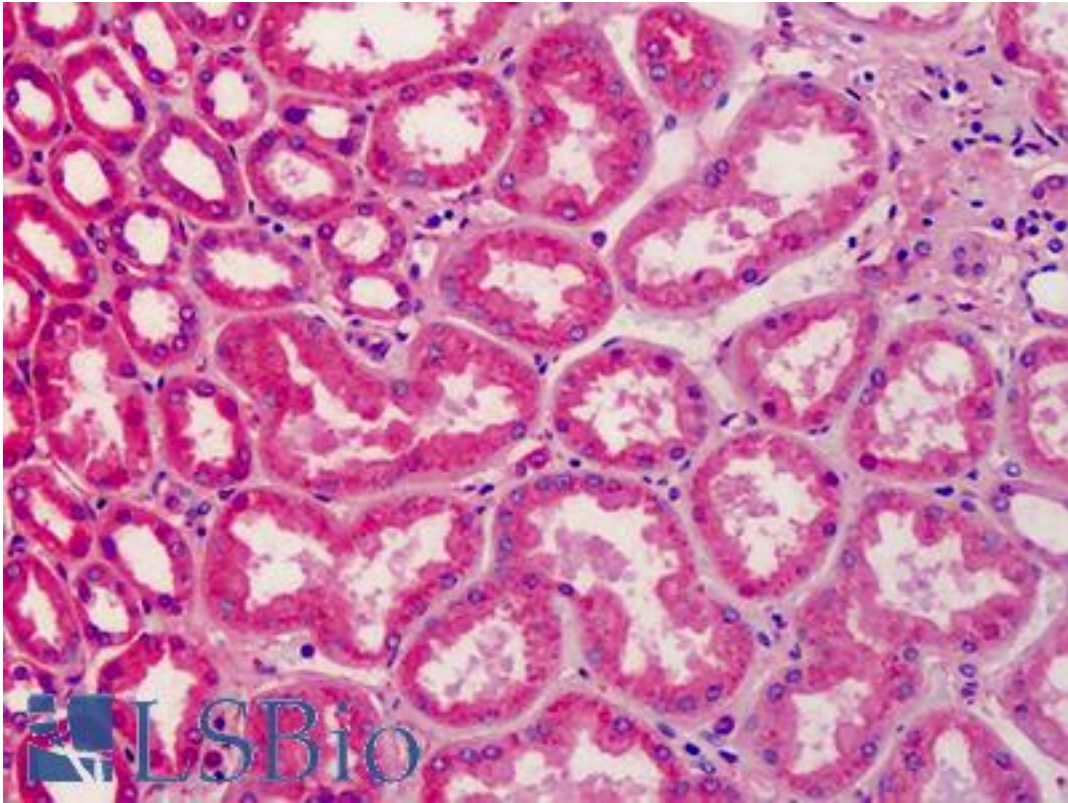


APOA2 / Apolipoprotein A II Rabbit anti-Human Polyclonal Antibody - LS-B2521 - LSBio

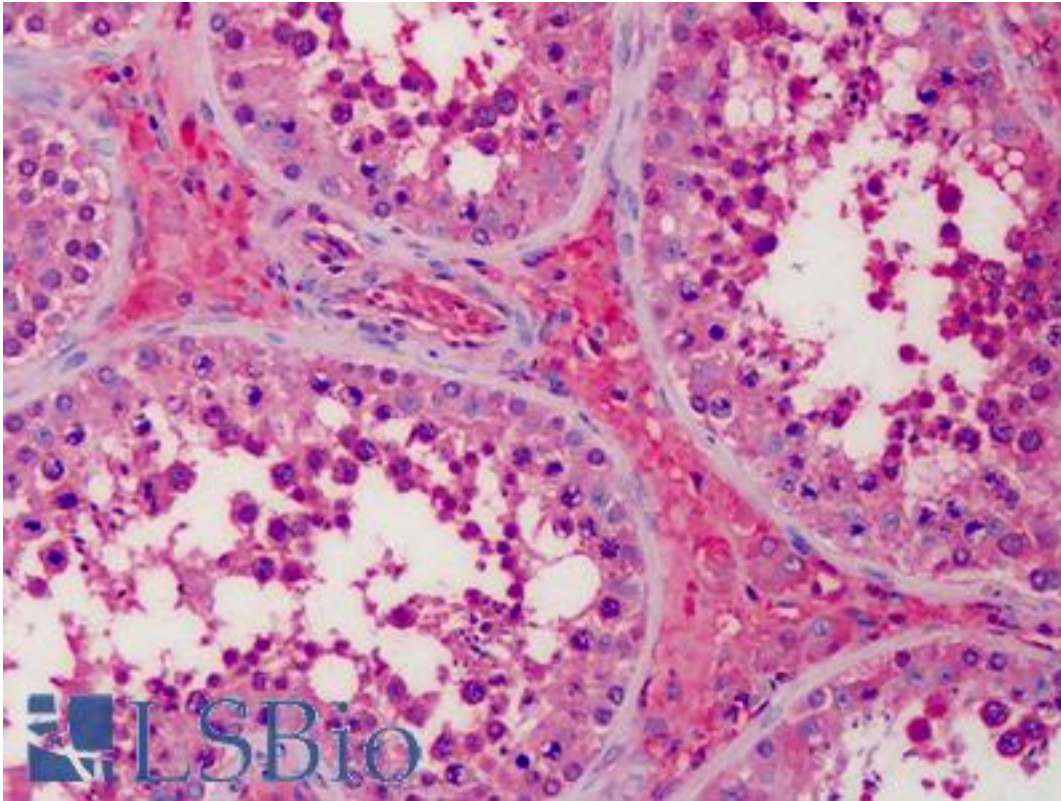
CatalogID:	LS-B2521
Validation:	This antibody replaces catalog number LS-C11942. It has been validated for use in the following assays: IHC-P.
Target:	apolipoprotein A-II (APOA2)
Synonyms:	APOA2 Antibody, Apo-AII Antibody, ApoAII Antibody, ApoA-II Antibody, Apolipoprotein A-II Antibody, Apolipoprotein A2 Antibody, Apolipoprotein A II Antibody
Host	APOA2 antibody was produced in Rabbit
Clonality:	Polyclonal
Isotype:	IgG
Immunogen Species:	APOA2 / Apolipoprotein A II antibody was raised against Human
Immunogen:	APOA2 / Apolipoprotein A II antibody was raised against human Apo All.
Specificity:	Specifically binds to human Apo All.
Reactivity:	Human
Purification:	Affinity purified
Presentation:	75 mM PBS, 75 mM sodium chloride, pH 7.2, 0.02% sodium azide.
Recommended Storage:	Long term: Add glycerol (40-50%) -20°C; Short term: +4°C
Usage Summary:	Immunohistochemistry: LS-B2521 was validated for use in immunohistochemistry on a panel of 21 formalin-fixed, paraffin-embedded (FFPE) human tissues after heat induced antigen retrieval in pH 6.0 citrate buffer. After incubation with the primary antibody, slides were incubated with biotinylated secondary antibody, followed by alkaline phosphatase-streptavidin and chromogen. The stained slides were evaluated by a pathologist to confirm staining specificity. The optimal working concentration for LS-B2521 was determined to be 5 ug/ml.
Uses:	IHC - Paraffin (5 µg/ml), Western blot (1:5000 - 1:40000), ELISA (1:5000 - 1:40000) (Optimal dilution to be determined by the researcher)
Size:	50 µg
Concentration:	1 mg/ml

Immunohistochemistry Image:



Anti-APOA2 antibody IHC of human kidney. Immunohistochemistry of formalin-fixed, paraffin-embedded tissue after heat-induced antigen retrieval. Antibody LS-B2521 concentration 5 ug/ml.

Immunohistochemistry Image:



Anti-APOA2 antibody IHC of human testis, Leydig cells. Immunohistochemistry of formalin-fixed, paraffin-embedded tissue after heat-induced antigen retrieval. Antibody LS-B2521 concentration 5 ug/ml.

Requested From:

Japan

Laboratory Reagent For In Vitro Research Use Only

Not for resale without prior written consent from LifeSpan BioSciences, Inc.

Created on 9/23/2014

© 2014 LifeSpan BioSciences