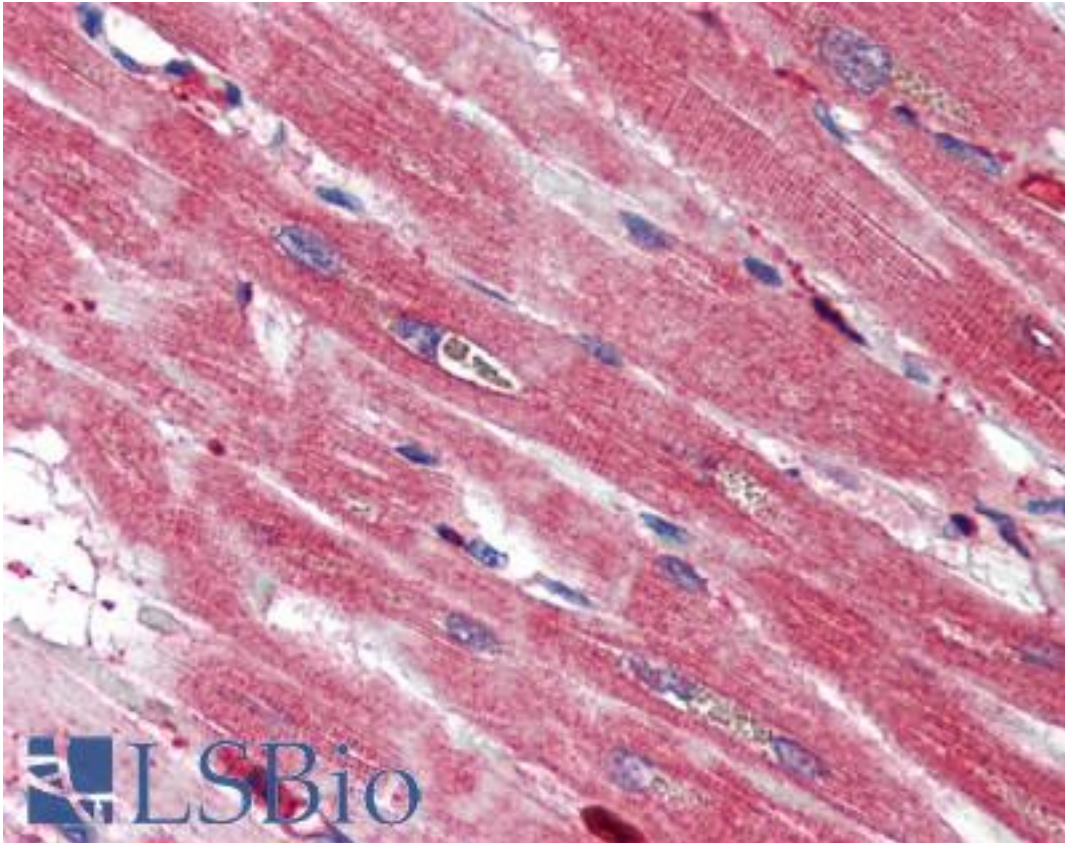


S100A4 / FSP1 Rabbit anti-Human Polyclonal Antibody - LS-B2520 - LSBio	
<b>CatalogID:</b>	LS-B2520
<b>Validation:</b>	This antibody replaces catalog number LS-C10046. It has been validated for use in the following assays: IHC-P.
<b>Target:</b>	S100 calcium binding protein A4 (S100A4)
<b>Synonyms:</b>	S100A4 Antibody, 42A Antibody, 18A2 Antibody, Fibroblast-specific protein-1 Antibody, FSP1 Antibody, MTS1 Antibody, PEL98 Antibody, Protein Mts1 Antibody, Calvasculin Antibody, CAPL Antibody, Metastasin Antibody, p9KA Antibody, Protein S100-A4 Antibody
<b>Host</b>	S100A4 antibody was produced in Rabbit
<b>Clonality:</b>	Polyclonal
<b>Isotype:</b>	IgG
<b>Immunogen Species:</b>	S100A4 / FSP1 antibody was raised against Human
<b>Immunogen:</b>	S100A4 / FSP1 antibody was raised against recombinant protein encoding full length human S100A4 Cellular Localization: Cytoplasmic. MW of Antigen: 10-12kD.
<b>Specificity:</b>	Recognizes human S100A4.
<b>Reactivity:</b>	Human
<b>Purification:</b>	Immunoaffinity purified
<b>Presentation:</b>	10 mM PBS, pH 7.6, 0.2% BSA, 15 mM sodium azide.
<b>Recommended Storage:</b>	Long term: -20°C; Short term: +4°C. Avoid repeat freeze-thaw cycles.
<b>Usage Summary:</b>	Immunohistochemistry: LS-B2520 was validated for use in immunohistochemistry on a panel of 21 formalin-fixed, paraffin-embedded (FFPE) human tissues after heat induced antigen retrieval in pH 6.0 citrate buffer. After incubation with the primary antibody, slides were incubated with biotinylated secondary antibody, followed by alkaline phosphatase-streptavidin and chromogen. The stained slides were evaluated by a pathologist to confirm staining specificity. The optimal working concentration for LS-B2520 was determined to be 2.5 ug/ml. Positive control: Human melanoma.
<b>Uses:</b>	IHC - Paraffin (2.5 µg/ml) (Optimal dilution to be determined by the researcher)
<b>Size:</b>	50 µl
<b>Concentration:</b>	0.2 mg/ml

**Immunohistochemistry Image:**



Anti-S100A4 antibody IHC of human heart. Immunohistochemistry of formalin-fixed, paraffin-embedded tissue after heat-induced antigen retrieval. Antibody LS-B2520 concentration 5 ug/ml.

**Requested From:**

Japan

Laboratory Reagent For In Vitro Research Use Only

Not for resale without prior written consent from LifeSpan BioSciences, Inc.

Created on 9/23/2014

© 2014 LifeSpan BioSciences