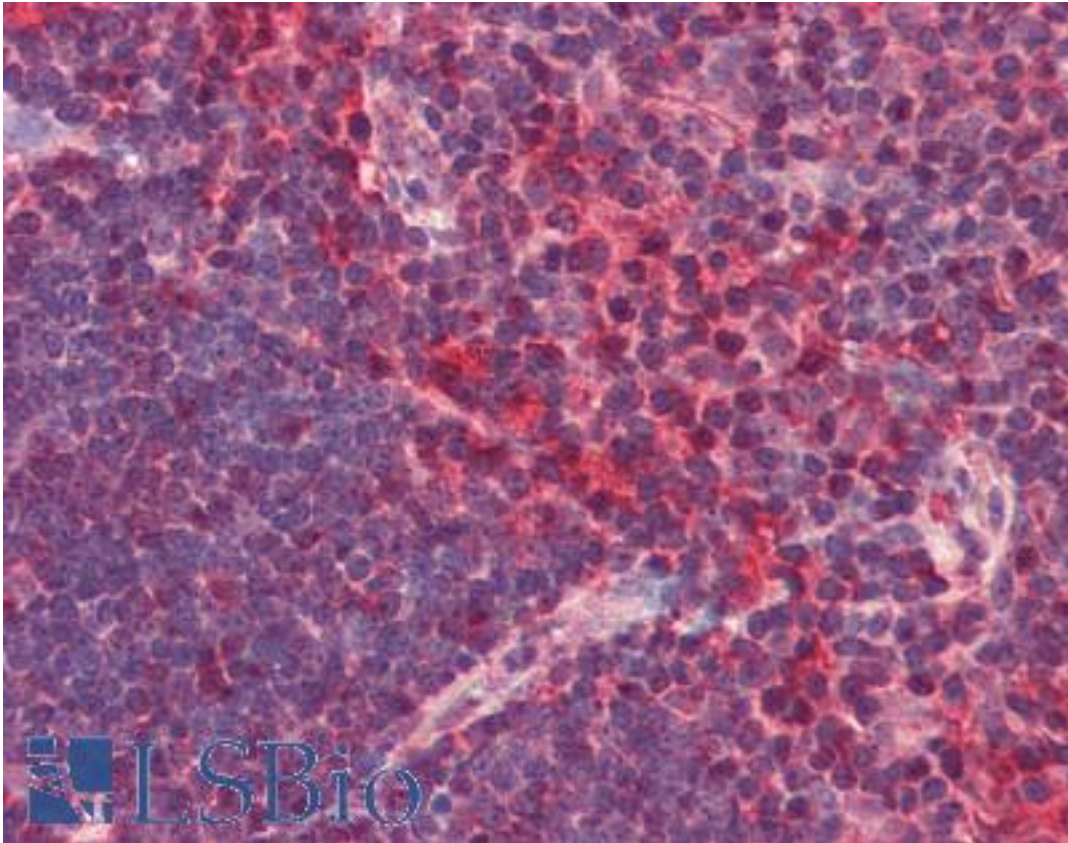


CXCR6 Rabbit anti-Human Polyclonal (N-Terminus) Antibody - LS-B2518 - LSBio

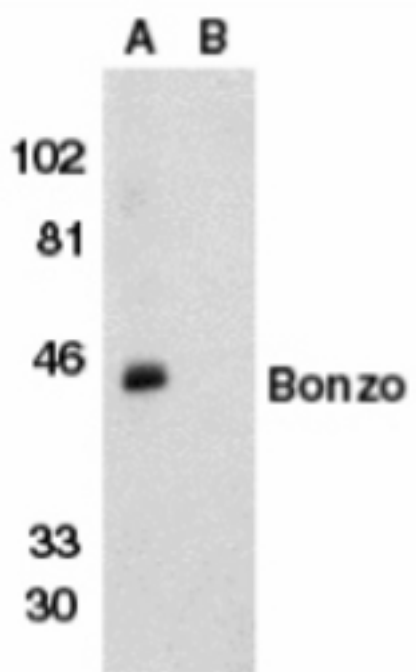
CatalogID:	LS-B2518
Validation:	This antibody replaces catalog number LS-C326. It has been validated for use in the following assays: IHC-P.
Target:	chemokine (C-X-C motif) receptor 6 (CXCR6)
Synonyms:	CXCR6 Antibody, CD186 antigen Antibody, CXCR-6 Antibody, STRL33 Antibody, TYMSTR Antibody, BONZO Antibody, CD186 Antibody, CDw186 Antibody, CXCR6 Antibody
Family / Subfamily:	GPCR / Chemokine
Host	CXCR6 antibody was produced in Rabbit
Clonality:	Polyclonal
Immunogen Species:	CXCR6 antibody was raised against Human
Antigen Type:	Synthetic peptide
Immunogen:	CXCR6 antibody was raised against synthetic peptide from human CXCR6.
Specificity:	peptide corresponding to amino acids near the amino terminus of human Bonzo/STRL33 The sequence of this peptide differs from those of African green monkey and pig-tailed macaque by one or two amino acids, respectively,
Epitope:	N-Terminus
Reactivity:	Human
Purification:	Immunoaffinity purified
Presentation:	PBS, 0.02% sodium azide.
Recommended Storage:	Short term 4°C, long term aliquot and store at -20°C, avoid freeze thaw cycles. Store undiluted.
Usage Summary:	Immunohistochemistry: LS-B2518 was validated for use in immunohistochemistry on a panel of 21 formalin-fixed, paraffin-embedded (FFPE) human tissues after heat induced antigen retrieval in pH 6.0 citrate buffer. After incubation with the primary antibody, slides were incubated with biotinylated secondary antibody, followed by alkaline phosphatase-streptavidin and chromogen. The stained slides were evaluated by a pathologist to confirm staining specificity. The optimal working concentration for LS-B2518 was determined to be 2.5 ug/ml.
Uses:	IHC - Paraffin (2.5 µg/ml), Western blot (1:500) (Optimal dilution to be determined by the researcher)
Size:	50 µg
Concentration:	0.5 mg/ml

Immunohistochemistry Image:



Anti-CXCR6 antibody IHC of human thymus. Immunohistochemistry of formalin-fixed, paraffin-embedded tissue after heat-induced antigen retrieval. Antibody LS-B2518 concentration 5 ug/ml.

Western Blot Image:



Western blot of Bonzo in human spleen tissue lysate in the absence (lane A) or presence (lane B) of peptide with Bonzo antibody at 1 ug/ml.

Requested From:

Japan

Laboratory Reagent For In Vitro Research Use Only

Not for resale without prior written consent from LifeSpan BioSciences, Inc.

Created on 9/23/2014

© 2014 LifeSpan BioSciences