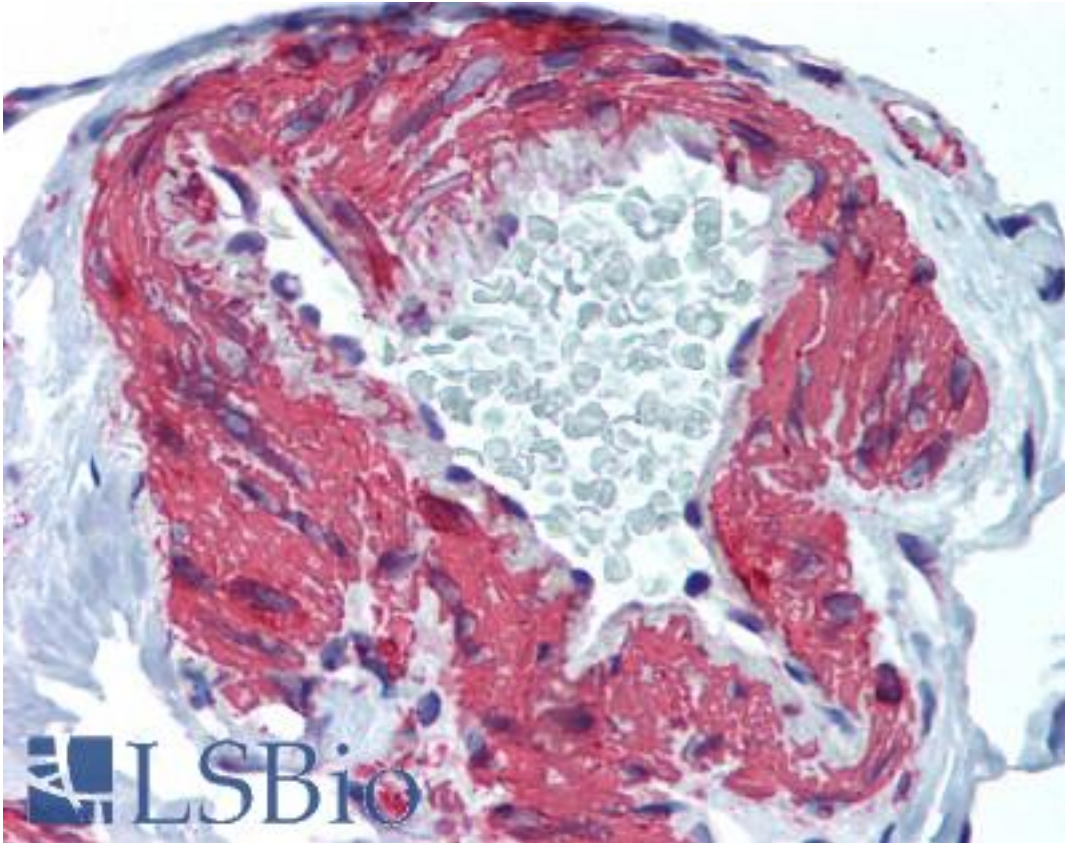


ACTA2 / Smooth Muscle Actin Rabbit anti-Human Polyclonal (N-Terminus) Antibody - LS-B2506 - LSBio	
CatalogID:	LS-B2506
Validation:	This antibody replaces catalog number LS-C34848. It has been validated for use in the following assays: IHC-P.
Target:	actin, alpha 2, smooth muscle, aorta (ACTA2)
Synonyms:	ACTA2 Antibody, ACTVS Antibody, Alpha-actin-2 Antibody, Alpha-cardiac actin Antibody, AAT6 Antibody, Actin, aortic smooth muscle Antibody, ACTSA Antibody, Smooth Muscle Actin Antibody, MYMY5 Antibody
Host	ACTA2 antibody was produced in Rabbit
Clonality:	Polyclonal
Immunogen Species:	ACTA2 / Smooth Muscle Actin antibody was raised against Human
Antigen Type:	Synthetic peptide
Immunogen:	ACTA2 / Smooth Muscle Actin antibody was raised against a synthetic peptide from N-terminus of human alpha smooth muscle isoform of actin. Cellular Localization: Cytoplasmic.
Specificity:	Recognizes smooth muscle Actin. Reacts with tumors arising from smooth muscles and myoepithelial cells. Stains smooth muscle cells in vessel walls, gut wall and myometrium. Myoepithelial cells in breast and salivary gland are also stained. Species cross-reactivity: Human, baboon, bovine, rabbit, mouse, rat and chicken.
Epitope:	N-Terminus
Reactivity:	Human, Mouse, Rat, Bovine, Rabbit, Chicken
Purification:	Immunoaffinity purified
Presentation:	10 mM PBS, pH 7.6, 0.2% BSA, 15 mM sodium azide.
Recommended Storage:	Long term: -20°C; Short term: +4°C. Avoid repeat freeze-thaw cycles.
Usage Summary:	Immunohistochemistry: LS-B2506 was validated for use in immunohistochemistry on a panel of 21 formalin-fixed, paraffin-embedded (FFPE) human tissues after heat induced antigen retrieval in pH 6.0 citrate buffer. After incubation with the primary antibody, slides were incubated with biotinylated secondary antibody, followed by alkaline phosphatase-streptavidin and chromogen. The stained slides were evaluated by a pathologist to confirm staining specificity. The optimal working concentration for LS-B2506 was determined to be 5 ug/ml. Positive control: Smooth muscle of arteries, gut wall, uterus and leiomyosarcoma.
Uses:	IHC - Paraffin (5 µg/ml) (Optimal dilution to be determined by the researcher)
Size:	50 µl

Immunohistochemistry Image:



Anti-ACTA2 antibody IHC of human colon, vessel. Immunohistochemistry of formalin-fixed, paraffin-embedded tissue after heat-induced antigen retrieval. Antibody LS-B2506 concentration 5 ug/ml.

Requested From:

Japan

Laboratory Reagent For In Vitro Research Use Only

Not for resale without prior written consent from LifeSpan BioSciences, Inc.

Created on 9/23/2014

© 2014 LifeSpan BioSciences