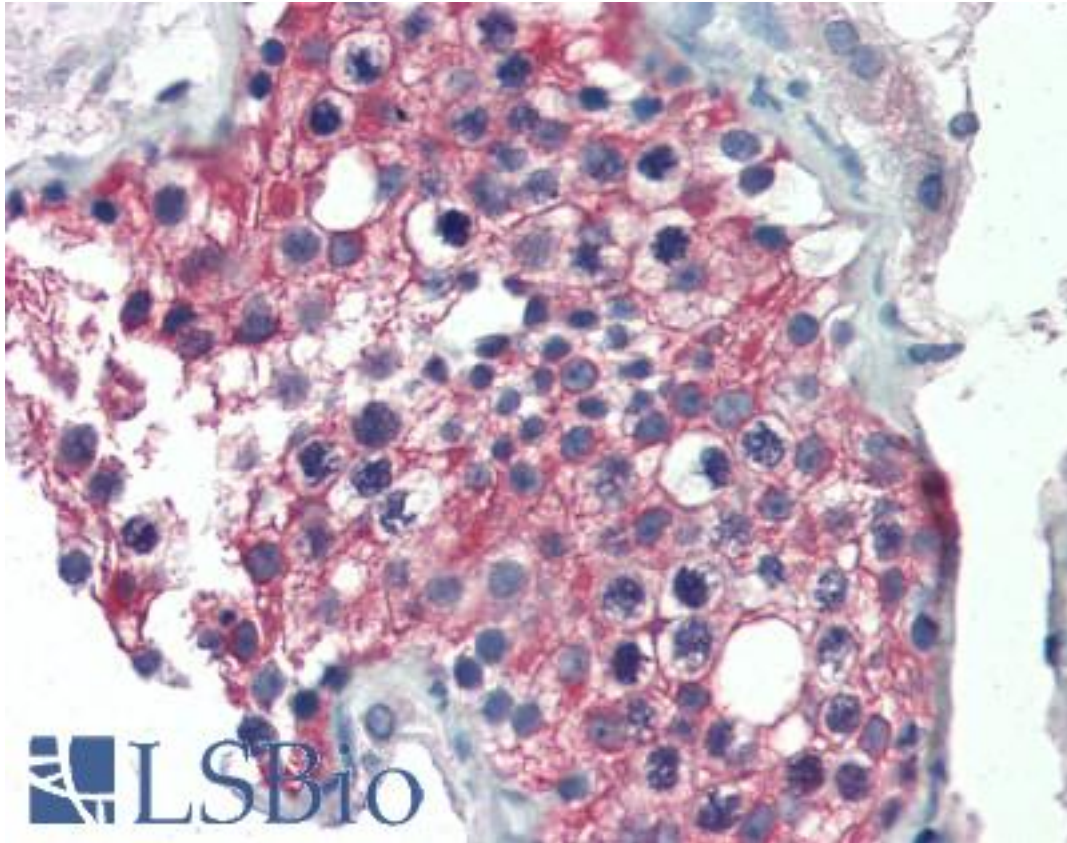


ALDH1A1 / ALDH1 Goat anti-Human Polyclonal (Internal) Antibody - LS-B2497 - LSBio

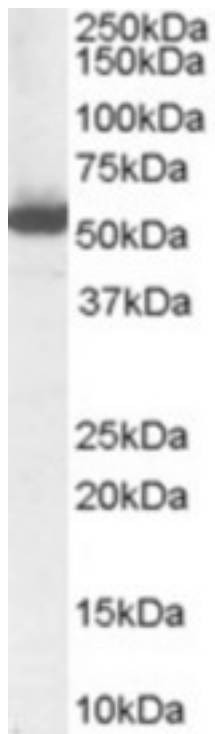
CatalogID:	LS-B2497
Validation:	This antibody replaces catalog number LS-C54481. It has been validated for use in the following assays: IHC-P.
Target:	aldehyde dehydrogenase 1 family, member A1 (ALDH1A1)
Synonyms:	ALDH1A1 Antibody, Acetaldehyde dehydrogenase 1 Antibody, ALDH class 1 Antibody, ALDC Antibody, Aldehyde dehydrogenase 1 Antibody, ALDH-E1 Antibody, ALDH1 Antibody, ALDH11 Antibody, PUMB1 Antibody, RALDH 1 Antibody, RALDH1 Antibody, ALHDII Antibody, Retinal dehydrogenase 1 Antibody, Retinaldehyde dehydrogenase 1 Antibody
Host	ALDH1A1 antibody was produced in Goat
Clonality:	Polyclonal
Immunogen Species:	ALDH1A1 / ALDH1 antibody was raised against Human
Antigen Type:	Synthetic peptide
Immunogen:	ALDH1A1 / ALDH1 antibody was raised against synthetic peptide C-RELGEYGFHEYTE from an internal region of human ALDH1A1 (NP_000680.2). Percent identity by BLAST analysis: Human, Gorilla, Orangutan, Gibbon, Monkey, Sheep, Bovine (100%); Marmoset, Bat, Horse, Opossum, Lizard (92%); Dog, Chicken, Platypus, Xenopus (85%).
Specificity:	Human ALDH1A1.
Epitope:	Internal
Reactivity:	Human, Gorilla, Orangutan, Gibbon, Bovine, Sheep
Predicted Reactivity:	Monkey, Bat, Horse
Purification:	Immunoaffinity purified
Presentation:	Tris-buffered saline, pH 7.3, 0.5% BSA, 0.02% sodium azide
Recommended Storage:	Store at -20°C. Minimize freezing and thawing.
Usage Summary:	Immunohistochemistry: LS-B2497 was validated for use in immunohistochemistry on a panel of 21 formalin-fixed, paraffin-embedded (FFPE) human tissues after heat induced antigen retrieval in pH 6.0 citrate buffer. After incubation with the primary antibody, slides were incubated with biotinylated secondary antibody, followed by alkaline phosphatase-streptavidin and chromogen. The stained slides were evaluated by a pathologist to confirm staining specificity. The optimal working concentration for LS-B2497 was determined to be 2.5 µg/ml.
Uses:	IHC - Paraffin (2.5 µg/ml), Western blot (1:32000) & (1 - 3 µg/ml), ELISA (1:32000) (Optimal dilution to be determined by the researcher)
Size:	50 µg
Concentration:	0.5 mg/ml

Immunohistochemistry Image:



Anti-ALDH1A1 antibody IHC of human testis. Immunohistochemistry of formalin-fixed, paraffin-embedded tissue after heat-induced antigen retrieval. Antibody LS-B2497 concentration 5 ug/ml.

Western Blot Image:



Antibody (1 ug/ml) staining of Human Liver Lysate (35 ug protein in RIPA buffer). Primary incubation was 1 hour. Detected by chemiluminescence.

Requested From:

Japan

Laboratory Reagent For In Vitro Research Use Only

Not for resale without prior written consent from LifeSpan BioSciences, Inc.

Created on 9/23/2014

© 2014 LifeSpan BioSciences