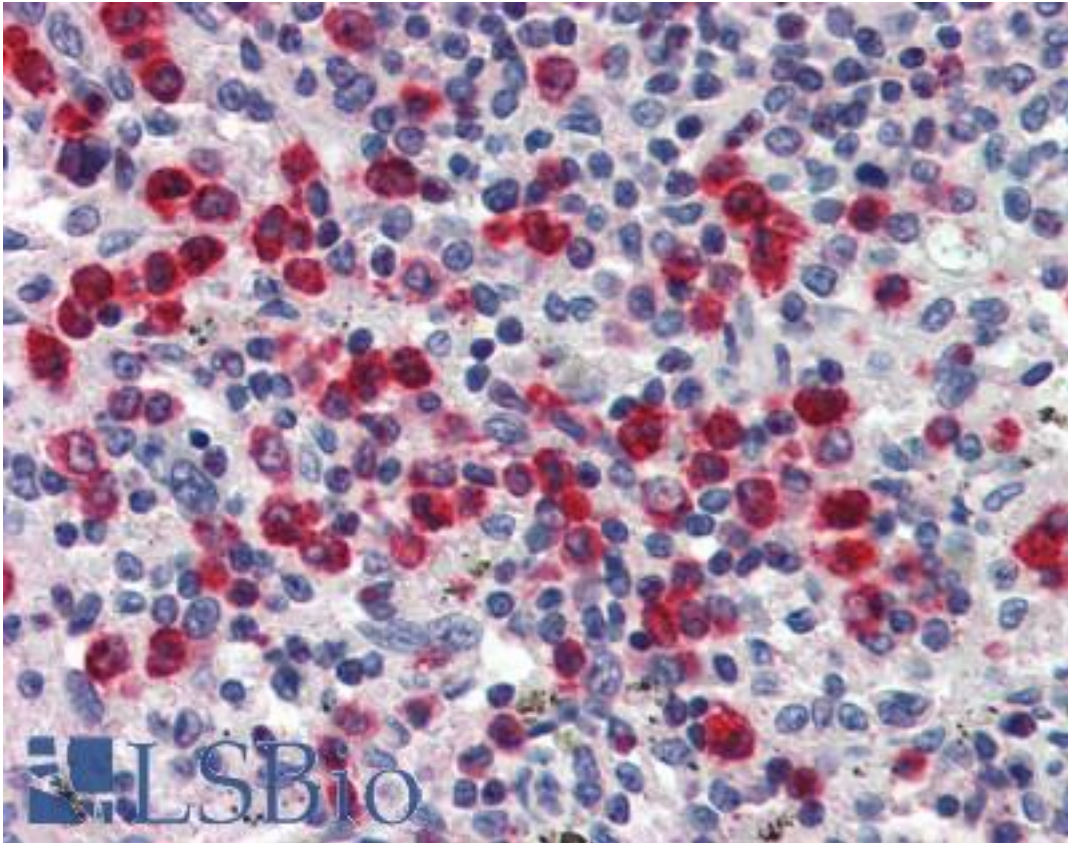


LCN2 / Lipocalin 2 / NGAL Goat anti-Human Polyclonal (Internal) Antibody - LS-B2496 - LSBio	
CatalogID:	LS-B2496
Validation:	This antibody replaces catalog number LS-C55067. It has been validated for use in the following assays: IHC-P.
Target:	lipocalin 2 (LCN2)
Synonyms:	LCN2 Antibody, 24p3 Antibody, HNL Antibody, Lipocalin 2 Antibody, Lipocalin-2 Antibody, MSF1 Antibody, Siderocalin LCN2 Antibody, NGAL Antibody, p25 Antibody, Lipocalin 2 (oncogene 24p3) Antibody, Oncogene 24p3 Antibody
Host	LCN2 antibody was produced in Goat
Clonality:	Polyclonal
Immunogen Species:	LCN2 / Lipocalin 2 / NGAL antibody was raised against Human
Antigen Type:	Synthetic peptide
Immunogen:	LCN2 / Lipocalin 2 / NGAL antibody was raised against synthetic peptide C-AILREDKDPQKMY from an internal region of human LCN2 (NP_005555.2). Percent identity by BLAST analysis: Human, Gorilla (100%).
Specificity:	Human LCN2.
Epitope:	Internal
Reactivity:	Human, Gorilla
Purification:	Immunoaffinity purified
Presentation:	Tris-buffered saline, pH 7.3, 0.5% BSA, 0.02% sodium azide
Recommended Storage:	Store at -20°C. Minimize freezing and thawing.
Usage Summary:	Immunohistochemistry: LS-B2496 was validated for use in immunohistochemistry on a panel of 21 formalin-fixed, paraffin-embedded (FFPE) human tissues after heat induced antigen retrieval in pH 6.0 citrate buffer. After incubation with the primary antibody, slides were incubated with biotinylated secondary antibody, followed by alkaline phosphatase-streptavidin and chromogen. The stained slides were evaluated by a pathologist to confirm staining specificity. The optimal working concentration for LS-B2496 was determined to be 2.5 ug/ml.
Uses:	IHC - Paraffin (2.5 µg/ml), Western blot (1:16000) & (0.01 - 0.03 µg/ml), ELISA (1:16000) (Optimal dilution to be determined by the researcher)
Size:	50 µg
Concentration:	0.5 mg/ml

Immunohistochemistry Image:



Anti-LCN2 antibody IHC of human spleen. Immunohistochemistry of formalin-fixed, paraffin-embedded tissue after heat-induced antigen retrieval. Antibody LS-B2496 concentration 5 ug/ml.

Western Blot Image:



Antibody (0.03 ug/ml) staining of Human Kidney lysate (35 ug protein in RIPA buffer). Primary incubation was 1 hour. Detected by chemiluminescence.

Requested From:

Japan

Laboratory Reagent For In Vitro Research Use Only

Not for resale without prior written consent from LifeSpan BioSciences, Inc.

Created on 9/23/2014

© 2014 LifeSpan BioSciences