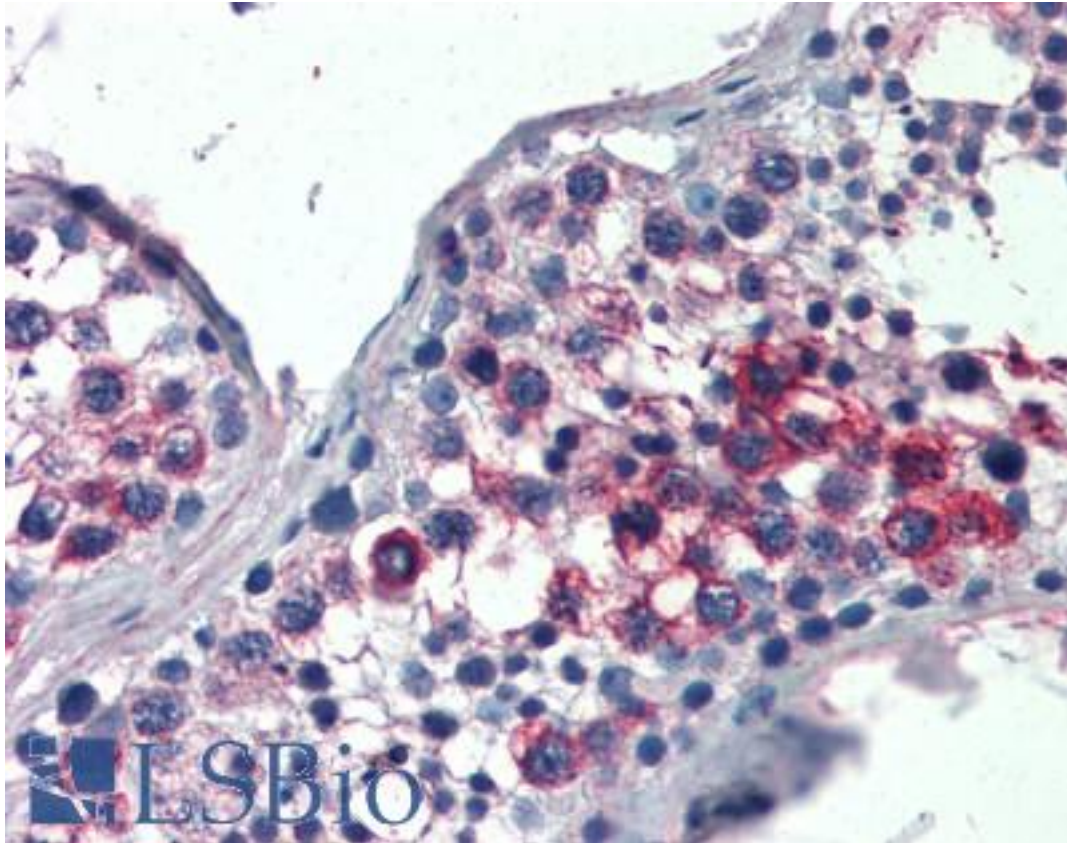


**SLIM / FHL1 Goat anti-Human Polyclonal (Internal) Antibody - LS-B2495 - LSBio**

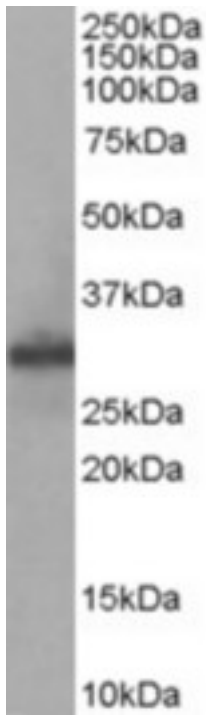
<b>CatalogID:</b>	LS-B2495
<b>Validation:</b>	This antibody replaces catalog number LS-C54838. It has been validated for use in the following assays: IHC-P.
<b>Target:</b>	four and a half LIM domains 1 (FHL1)
<b>Synonyms:</b>	FHL1 Antibody, BA535K18.1 Antibody, FHL1B Antibody, FHL1A Antibody, FLH1A Antibody, Four and a half LIM domains 1 Antibody, FHL-1 Antibody, KYOT Antibody, Skeletal muscle LIM-protein 1 Antibody, SLIM-1 Antibody, Skeletal muscle LIM-protein1 Antibody, SLIMMER Antibody, XMPMA Antibody, KYO-T Antibody, LIM protein SLIMMER Antibody, SLIM Antibody, SLIM1 Antibody
<b>Host</b>	FHL1 antibody was produced in Goat
<b>Clonality:</b>	Polyclonal
<b>Immunogen Species:</b>	SLIM / FHL1 antibody was raised against Human
<b>Antigen Type:</b>	Synthetic peptide
<b>Immunogen:</b>	SLIM / FHL1 antibody was raised against synthetic peptide CNKRFVFHNEQVY from an internal region of human FHL1 (NP_001440.1; NP_001153171.1). Percent identity by BLAST analysis: Mouse, Rat, Hamster (100%); Human, Gorilla, Orangutan, Gibbon, Monkey, Marmoset, Sheep, Elephant, Bovine, Dog, Horse, Rabbit, Pig, Xenopus (92%).
<b>Specificity:</b>	Human FHL1. This antibody is expected to recognise isoforms 2( NP_001440.1) and 5 (NP_001153171.1). Since June 2009 the second N residue in the immunizing peptide is no longer representative as it has been substituted by Q at position 284 of NP_001440.2. Variants NP_001440.2, NP_001153176.1 and NP_001153172.1 represent identical protein.
<b>Epitope:</b>	Internal
<b>Reactivity:</b>	Human, Mouse, Rat, Hamster
<b>Predicted Reactivity:</b>	Gorilla, Orangutan, Gibbon, Monkey, Bovine, Dog, Horse, Pig, Rabbit, Sheep, Xenopus
<b>Purification:</b>	Immunoaffinity purified
<b>Presentation:</b>	Tris-buffered saline, pH 7.3, 0.5% BSA, 0.02% sodium azide
<b>Recommended Storage:</b>	Store at -20°C. Minimize freezing and thawing.
<b>Usage Summary:</b>	Immunohistochemistry: LS-B2495 was validated for use in immunohistochemistry on a panel of 21 formalin-fixed, paraffin-embedded (FFPE) human tissues after heat induced antigen retrieval in pH 6.0 citrate buffer. After incubation with the primary antibody, slides were incubated with biotinylated secondary antibody, followed by alkaline phosphatase-streptavidin and chromogen. The stained slides were evaluated by a pathologist to confirm staining specificity. The optimal working concentration for LS-B2495 was determined to be 2.5 µg/ml.
<b>Uses:</b>	IHC - Paraffin (2.5 µg/ml), Western blot (1:32000) & (0.05 - 0.3 µg/ml), ELISA (1:32000) (Optimal dilution to be determined by the researcher)
<b>Size:</b>	50 µg
<b>Concentration:</b>	0.5 mg/ml

**Immunohistochemistry Image:**



Anti-FHL1 antibody IHC of human testis. Immunohistochemistry of formalin-fixed, paraffin-embedded tissue after heat-induced antigen retrieval. Antibody LS-B2495 concentration 5 ug/ml.

**Western Blot Image:**



Antibody staining (0.05 ug/ml) of Human Muscle lysate (RIPA buffer, 35 ug total protein per lane). Primary incubated for 1 hour. Detected by Western blot of chemiluminescence.

**Requested From:**

Japan

Laboratory Reagent For In Vitro Research Use Only

Not for resale without prior written consent from LifeSpan BioSciences, Inc.

Created on 9/23/2014

© 2014 LifeSpan BioSciences