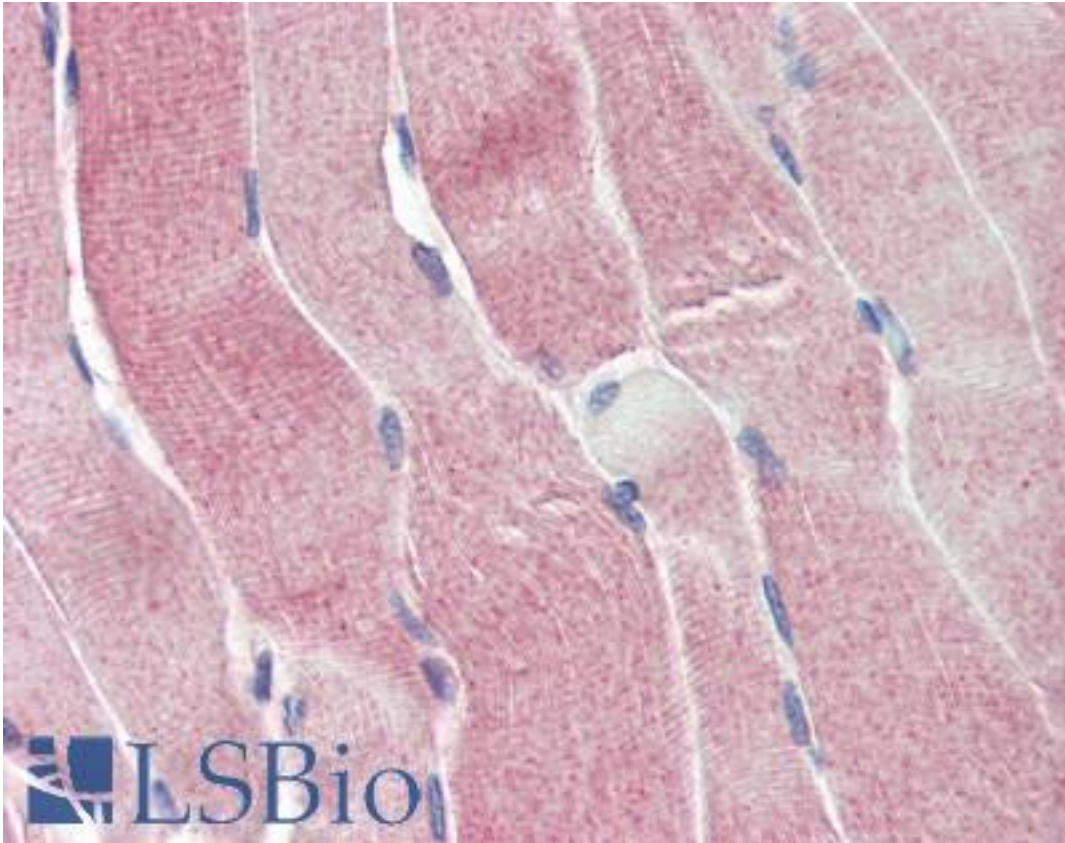


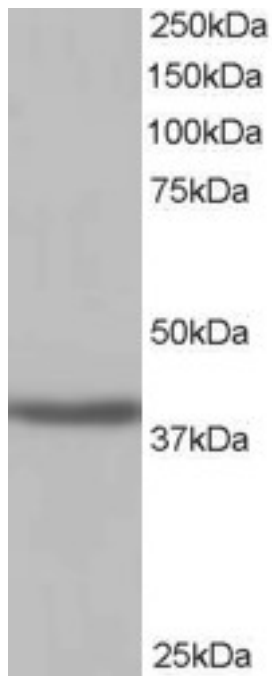
SIRT4 / Sirtuin 4 Goat anti-Human Polyclonal (C-Terminus) Antibody - LS-B2493 - LSBio	
CatalogID:	LS-B2493
Validation:	This antibody replaces catalog number LS-C55470. It has been validated for use in the following assays: IHC-P.
Target:	sirtuin 4 (SIRT4)
Synonyms:	SIRT4 Antibody, Sir2-like 4 Antibody, SIR2-like protein 4 Antibody, Sirtuin 4 Antibody, Sirtuin type 4 Antibody, SIR2L4 Antibody
Family / Subfamily:	ADP-Ribosyltransferase / not assigned-ADP-Ribosyltransferase
Host	SIRT4 antibody was produced in Goat
Clonality:	Polyclonal
Immunogen Species:	SIRT4 / Sirtuin 4 antibody was raised against Human
Antigen Type:	Synthetic peptide
Immunogen:	SIRT4 / Sirtuin 4 antibody was raised against synthetic peptide SRCGELLPLIDPC from the C-terminus of human SIRT4 (NP_036372.1). Percent identity by BLAST analysis: Human, Gorilla (100%); Gibbon, Marmoset, Mouse, Rat, Sheep, Hamster, Elephant, Bovine, Horse, Pig (92%); Dog, Platypus (85%).
Specificity:	Human SIRT4.
Epitope:	C-Terminus
Reactivity:	Human, Gorilla
Predicted Reactivity:	Gibbon, Monkey, Mouse, Rat, Bovine, Hamster, Horse, Pig, Sheep
Purification:	Immunoaffinity purified
Presentation:	Tris-buffered saline, pH 7.3, 0.5% BSA, 0.02% sodium azide
Recommended Storage:	Store at -20°C. Minimize freezing and thawing.
Usage Summary:	Immunohistochemistry: LS-B2493 was validated for use in immunohistochemistry on a panel of 21 formalin-fixed, paraffin-embedded (FFPE) human tissues after heat induced antigen retrieval in pH 6.0 citrate buffer. After incubation with the primary antibody, slides were incubated with biotinylated secondary antibody, followed by alkaline phosphatase-streptavidin and chromogen. The stained slides were evaluated by a pathologist to confirm staining specificity. The optimal working concentration for LS-B2493 was determined to be 2.5 ug/ml.
Uses:	IHC - Paraffin (2.5 µg/ml), Western blot (1 - 3 µg/ml), ELISA (Optimal dilution to be determined by the researcher)
Size:	50 µg
Concentration:	0.5 mg/ml

Immunohistochemistry Image:



Anti-SIRT4 antibody IHC of human skeletal muscle. Immunohistochemistry of formalin-fixed, paraffin-embedded tissue after heat-induced antigen retrieval. Antibody LS-B2493 concentration 5 ug/ml.

Western Blot Image:



Antibody staining (1 ug/ml) of Human Kidney lysate (RIPA buffer, 35 ug total protein per lane). Primary incubated for 1 hour. Detected by Western blot of chemiluminescence.

Requested From:

Japan

Laboratory Reagent For In Vitro Research Use Only

Not for resale without prior written consent from LifeSpan BioSciences, Inc.

Created on 9/23/2014

© 2014 LifeSpan BioSciences