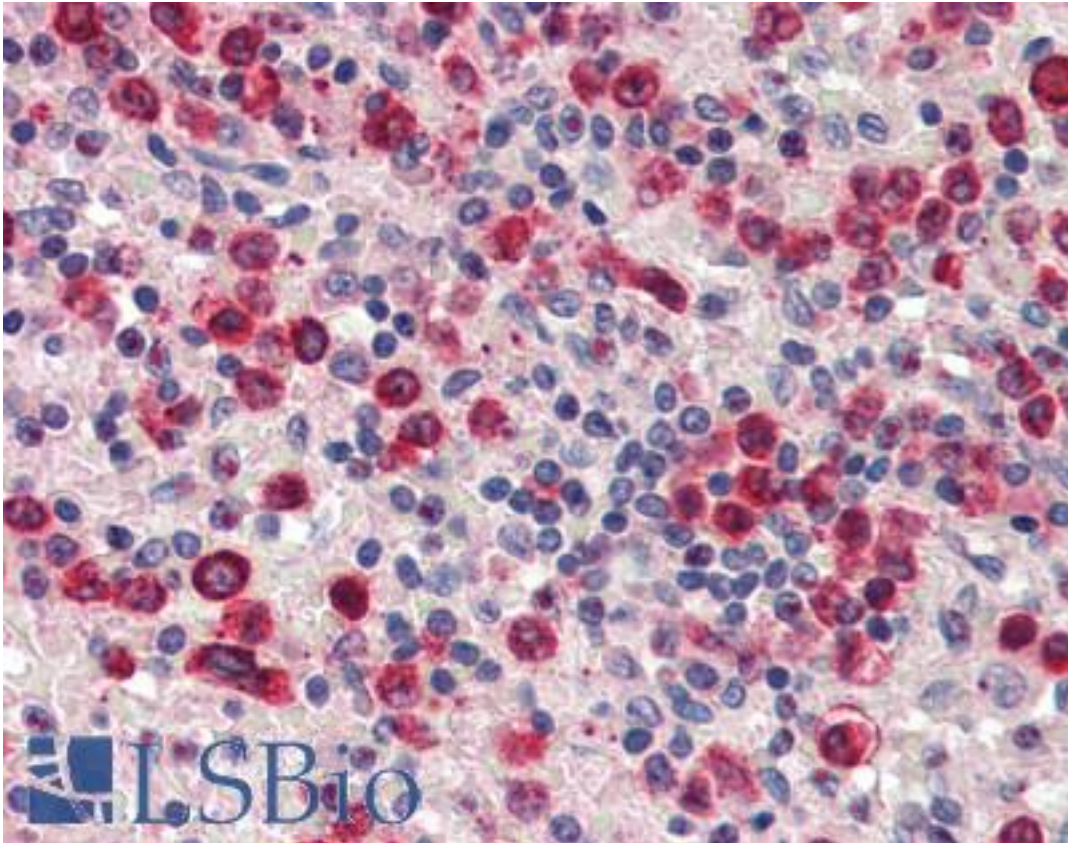


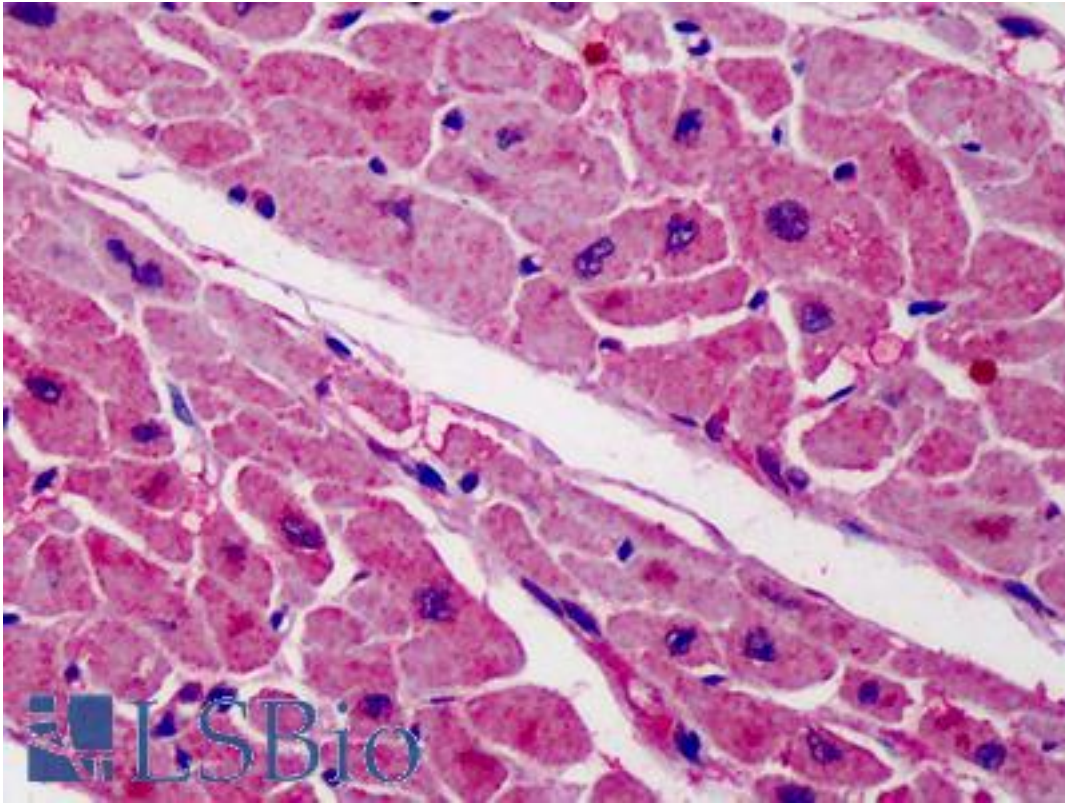
ZBTB7A / Pokemon Goat anti-Human Polyclonal (C-Terminus) Antibody - LS-B2491 - LSBio	
CatalogID:	LS-B2491
Validation:	This antibody replaces catalog number LS-C54818. It has been validated for use in the following assays: IHC-P.
Target:	zinc finger and BTB domain containing 7A (ZBTB7A)
Synonyms:	ZBTB7A Antibody, Factor binding IST protein 1 Antibody, FBI1 Antibody, HIV-1 1st -binding protein 1 Antibody, FBI-1 Antibody, LRF Antibody, Lymphoma related factor Antibody, TIP21 Antibody, TTF-I-interacting peptide 21 Antibody, Zinc finger protein 857A Antibody, ZBTB7 Antibody, ZNF857A Antibody, Pokemon Antibody
Host	ZBTB7A antibody was produced in Goat
Clonality:	Polyclonal
Immunogen Species:	ZBTB7A / Pokemon antibody was raised against Human
Antigen Type:	Synthetic peptide
Immunogen:	ZBTB7A / Pokemon antibody was raised against synthetic peptide (C-GAATDGNFTAGLA) from C-terminus of human ZBTB7A. Percent identity by BLAST analysis: Human, Gibbon, Monkey (100%); Gorilla, Marmoset (92%).
Specificity:	Human ZBTB7A.
Epitope:	C-Terminus
Reactivity:	Human, Gibbon
Predicted Reactivity:	Gorilla, Monkey
Purification:	Immunoaffinity purified
Presentation:	Tris-buffered saline, pH 7.3, 0.5% BSA, 0.02% sodium azide
Recommended Storage:	Store at -20°C. Minimize freezing and thawing.
Usage Summary:	Immunohistochemistry: LS-B2491 was validated for use in immunohistochemistry on a panel of 21 formalin-fixed, paraffin-embedded (FFPE) human tissues after heat induced antigen retrieval in pH 6.0 citrate buffer. After incubation with the primary antibody, slides were incubated with biotinylated secondary antibody, followed by alkaline phosphatase-streptavidin and chromogen. The stained slides were evaluated by a pathologist to confirm staining specificity. The optimal working concentration for LS-B2491 was determined to be 2.5 ug/ml.
Uses:	IHC - Paraffin (2.5 µg/ml), Western blot (1:32000) & (1 µg/ml), ELISA (1:32000) (Optimal dilution to be determined by the researcher)
Size:	50 µg
Concentration:	0.5 mg/ml

Immunohistochemistry Image:



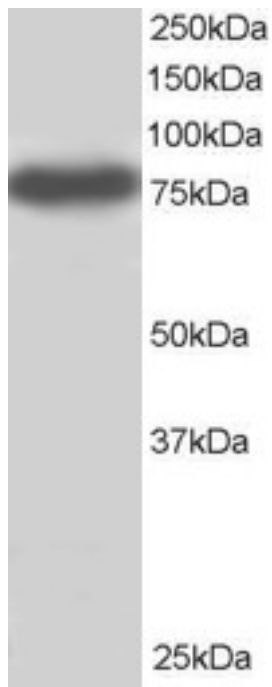
Anti-ZBTB7A antibody IHC of human spleen. Immunohistochemistry of formalin-fixed, paraffin-embedded tissue after heat-induced antigen retrieval. Antibody LS-B2491 concentration 5 ug/ml.

Immunohistochemistry Image:



Anti-ZBTB7A antibody IHC of human heart. Immunohistochemistry of formalin-fixed, paraffin-embedded tissue after heat-induced antigen retrieval. Antibody LS-B2491 concentration 2.5 ug/ml.

Western Blot Image:



Antibody staining (1 ug/ml) of HeLa lysate (RIPA buffer, 30 ug total protein per lane). Primary incubated for 1 hour. Detected by Western blot of chemiluminescence.

Requested From:

Japan

Laboratory Reagent For In Vitro Research Use Only

Not for resale without prior written consent from LifeSpan BioSciences, Inc.

Created on 9/23/2014

© 2014 LifeSpan BioSciences