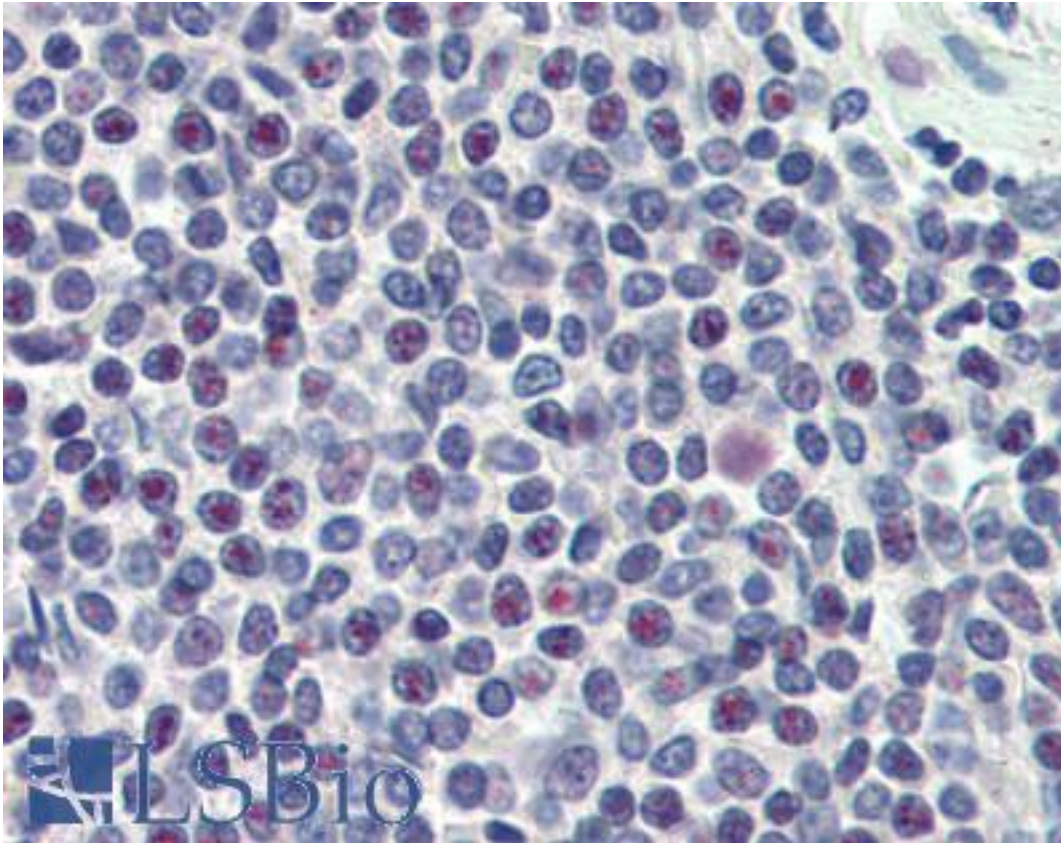


HMG20A Goat anti-Human Polyclonal (C-Terminus) Antibody - LS-B2490 - LSBio	
CatalogID:	LS-B2490
Validation:	This antibody replaces catalog number LS-C54971. It has been validated for use in the following assays: IHC-P.
Target:	high mobility group 20A (HMG20A)
Synonyms:	HMG20A Antibody, HMGXB1 Antibody, High-mobility group 20A Antibody, HMG box domain containing 1 Antibody, High mobility group 20A Antibody, HMG box-containing protein 20A Antibody, HMGX1 Antibody
Host	HMG20A antibody was produced in Goat
Clonality:	Polyclonal
Immunogen Species:	HMG20A antibody was raised against Human
Antigen Type:	Synthetic peptide
Immunogen:	HMG20A antibody was raised against synthetic peptide C-ATVREVVNRLDR from the C-terminus of human HMG20A (NP_060670.1). Percent identity by BLAST analysis: Human, Chimpanzee, Gorilla, Orangutan, Gibbon, Monkey, Marmoset, Tamarin, Mouse, Rat, Hamster, Panda, Dog, Bat, Bovine, Horse, Rabbit, Pig, Opossum, Platypus (100%); Elephant (92%); Turkey, Chicken, Stickleback, Zebrafish (83%).
Specificity:	Human HMG20A.
Epitope:	C-Terminus
Reactivity:	Human, Chimpanzee, Gorilla, Orangutan, Gibbon, Monkey, Mouse, Rat, Bat, Bovine, Dog, Hamster, Horse, Pig, Rabbit
Purification:	Immunoaffinity purified
Presentation:	Tris-buffered saline, pH 7.3, 0.5% BSA, 0.02% sodium azide
Recommended Storage:	Store at -20°C. Minimize freezing and thawing.
Usage Summary:	Immunohistochemistry: LS-B2490 was validated for use in immunohistochemistry on a panel of 21 formalin-fixed, paraffin-embedded (FFPE) human tissues after heat induced antigen retrieval in pH 6.0 citrate buffer. After incubation with the primary antibody, slides were incubated with biotinylated secondary antibody, followed by alkaline phosphatase-streptavidin and chromogen. The stained slides were evaluated by a pathologist to confirm staining specificity. The optimal working concentration for LS-B2490 was determined to be 2.5 ug/ml.
Uses:	IHC - Paraffin (2.5 µg/ml), ELISA (1:32000) (Optimal dilution to be determined by the researcher)
Size:	50 µg
Concentration:	0.5 mg/ml

Immunohistochemistry Image:



Anti-HMG20A antibody IHC of human spleen. Immunohistochemistry of formalin-fixed, paraffin-embedded tissue after heat-induced antigen retrieval. Antibody LS-B2490 concentration 5 ug/ml.

Requested From:

Japan

Laboratory Reagent For In Vitro Research Use Only

Not for resale without prior written consent from LifeSpan BioSciences, Inc.

Created on 9/23/2014

© 2014 LifeSpan BioSciences