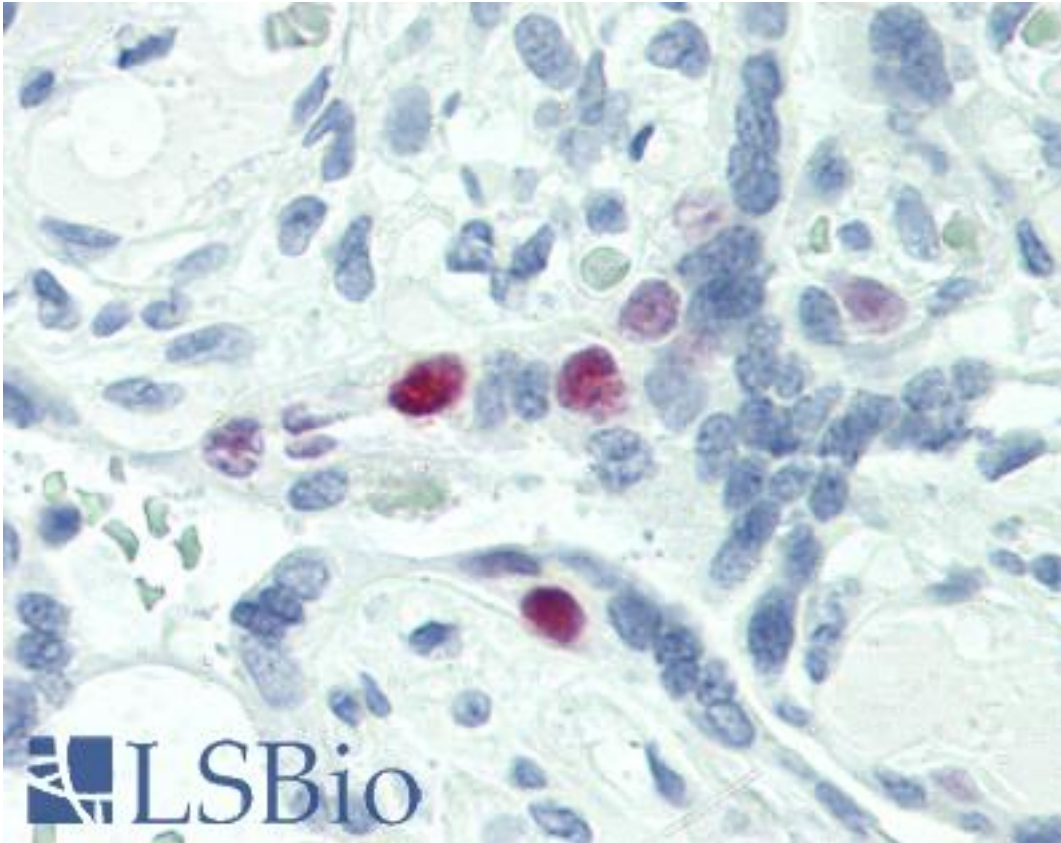


**SKP2 Mouse anti-Human Monoclonal Antibody - LS-B2487 - LSBio**

<b>CatalogID:</b>	LS-B2487
<b>Validation:</b>	This antibody replaces catalog number LS-C9423. It has been validated for use in the following assays: IHC-P.
<b>Target:</b>	S-phase kinase-associated protein 2, E3 ubiquitin protein ligase (SKP2)
<b>Synonyms:</b>	SKP2 Antibody, F-box/LRR-repeat protein 1 Antibody, FBL1 Antibody, FLB1 Antibody, F-box protein Skp2 Antibody, FBXL1 Antibody, p45 Antibody, p45skp2 Antibody
<b>Host</b>	SKP2 antibody was produced in Mouse
<b>Clonality:</b>	Monoclonal
<b>Isotype:</b>	IgG1,k
<b>Immunogen Species:</b>	SKP2 antibody was raised against Human
<b>Antigen Type:</b>	Recombinant protein
<b>Immunogen:</b>	SKP2 antibody was raised against recombinant, full-length human p45SKP2 protein.
<b>Specificity:</b>	Recognizes only human p45SKP2. Cross-reactivity with related endogenous proteins has not been observed.
<b>Reactivity:</b>	Human
<b>Purification:</b>	Protein A purified
<b>Presentation:</b>	PBS, pH 7.4, 0.1% sodium azide
<b>Recommended Storage:</b>	Long term: -20°C; Short term: +4°C. Avoid repeat freeze-thaw cycles.
<b>Usage Summary:</b>	Immunohistochemistry: LS-B2487 was validated for use in immunohistochemistry on a panel of 21 formalin-fixed, paraffin-embedded (FFPE) human tissues after heat induced antigen retrieval in pH 6.0 citrate buffer. After incubation with the primary antibody, slides were incubated with biotinylated secondary antibody, followed by alkaline phosphatase-streptavidin and chromogen. The stained slides were evaluated by a pathologist to confirm staining specificity. The optimal working concentration for LS-B2487 was determined to be 5 ug/ml. Positive control: HeLa, Jurkat and 293T cell lines.
<b>Uses:</b>	IHC - Paraffin (5 µg/ml), Western blot (1 - 2 µg/ml), Immunoprecipitation, ELISA (0.1 - 1 µg/ml) (Optimal dilution to be determined by the researcher)
<b>Size:</b>	50 µg
<b>Concentration:</b>	0.5 mg/ml

**Immunohistochemistry Image:**



Anti-SKP2 antibody IHC of human placenta. Immunohistochemistry of formalin-fixed, paraffin-embedded tissue after heat-induced antigen retrieval. Antibody LS-B2487 concentration 5 ug/ml.

**Requested From:**

Japan

Laboratory Reagent For In Vitro Research Use Only

Not for resale without prior written consent from LifeSpan BioSciences, Inc.

Created on 9/23/2014

© 2014 LifeSpan BioSciences