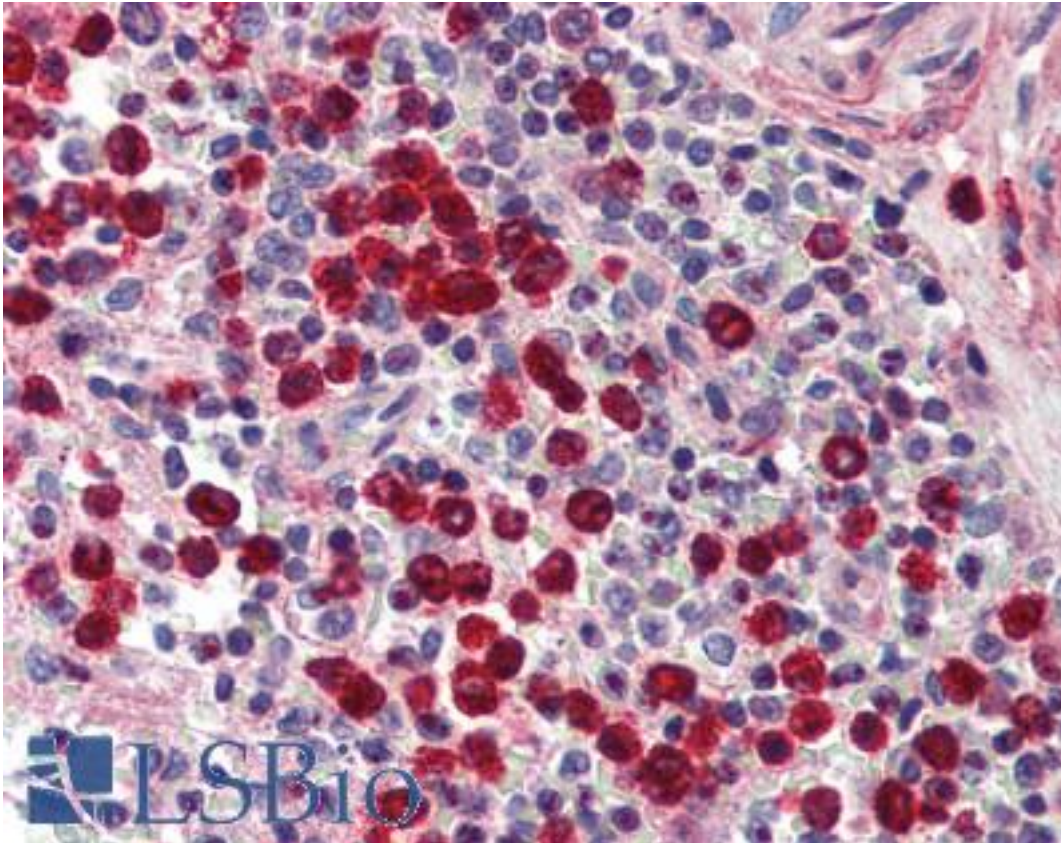


MMP9 / Gelatinase B Rabbit anti-Rat Polyclonal Antibody - LS-B2486 - LSBio	
<b>CatalogID:</b>	LS-B2486
<b>Validation:</b>	This antibody replaces catalog number LS-C8814. It has been validated for use in the following assays: IHC-P.
<b>Target:</b>	matrix metalloproteinase 9 (gelatinase B, 92kDa gelatinase, 92kDa type IV collagenase) (MMP9)
<b>Synonyms:</b>	MMP9 Antibody, 92kd gelatinase Antibody, 92 kd type iv collagenase Antibody, 92 kDa gelatinase Antibody, 92 kDa type IV collagenase Antibody, Matrix metalloproteinase-9 Antibody, MMP-9 Antibody, Type V collagenase Antibody, CLG4B Antibody, Gelatinase B Antibody, GELB Antibody, Macrophage gelatinase Antibody, MANDP2 Antibody
<b>Family / Subfamily:</b>	Protease / Metalloproteinase M10A
<b>Host</b>	MMP9 antibody was produced in Rabbit
<b>Clonality:</b>	Polyclonal
<b>Isotype:</b>	IgG
<b>Immunogen Species:</b>	MMP9 / Gelatinase B antibody was raised against Rat
<b>Immunogen:</b>	MMP9 / Gelatinase B antibody was raised against e. coli expressed active rat 92kD type IV collagenase (catalytic domain).
<b>Specificity:</b>	Recognizes rat MMP-9 pro and active forms. Exhibits no cross-reactivity with other MMP family members.
<b>Reactivity:</b>	Rat, Human, Mouse
<b>Purification:</b>	Protein A purified
<b>Presentation:</b>	PBS, 0.05% sodium azide
<b>Recommended Storage:</b>	+4°C or -20°C, Avoid repeated freezing and thawing.
<b>Usage Summary:</b>	Immunohistochemistry: LS-B2486 was validated for use in immunohistochemistry on a panel of 21 formalin-fixed, paraffin-embedded (FFPE) human tissues after heat induced antigen retrieval in pH 6.0 citrate buffer. After incubation with the primary antibody, slides were incubated with biotinylated secondary antibody, followed by alkaline phosphatase-streptavidin and chromogen. The stained slides were evaluated by a pathologist to confirm staining specificity. The optimal working concentration for LS-B2486 was determined to be 5 ug/ml. Western Blot: 1:500. Under fully reduced conditions, typically 98-95kD pro and 92-88kD active forms and breakdown products are detected. Under non-reduced conditions, additional bands may be detected due to SDS-stable TIMP and other inhibitor complexes. Positive control: HL660 cell lysate, U937 cell lysate, lung.
<b>Uses:</b>	IHC - Paraffin (5 µg/ml), IHC - Frozen (1:50), Western blot (1:1000), Immunoprecipitation (1:250) (Optimal dilution to be determined by the researcher)
<b>Size:</b>	50 µg
<b>Concentration:</b>	1 mg/ml

**Immunohistochemistry Image:**



Anti-MMP-9 antibody IHC of human spleen. Immunohistochemistry of formalin-fixed, paraffin-embedded tissue after heat-induced antigen retrieval. Antibody LS-B2486 concentration 5 ug/ml.

**Requested From:**

Japan

Laboratory Reagent For In Vitro Research Use Only

Not for resale without prior written consent from LifeSpan BioSciences, Inc.

Created on 9/23/2014

© 2014 LifeSpan BioSciences