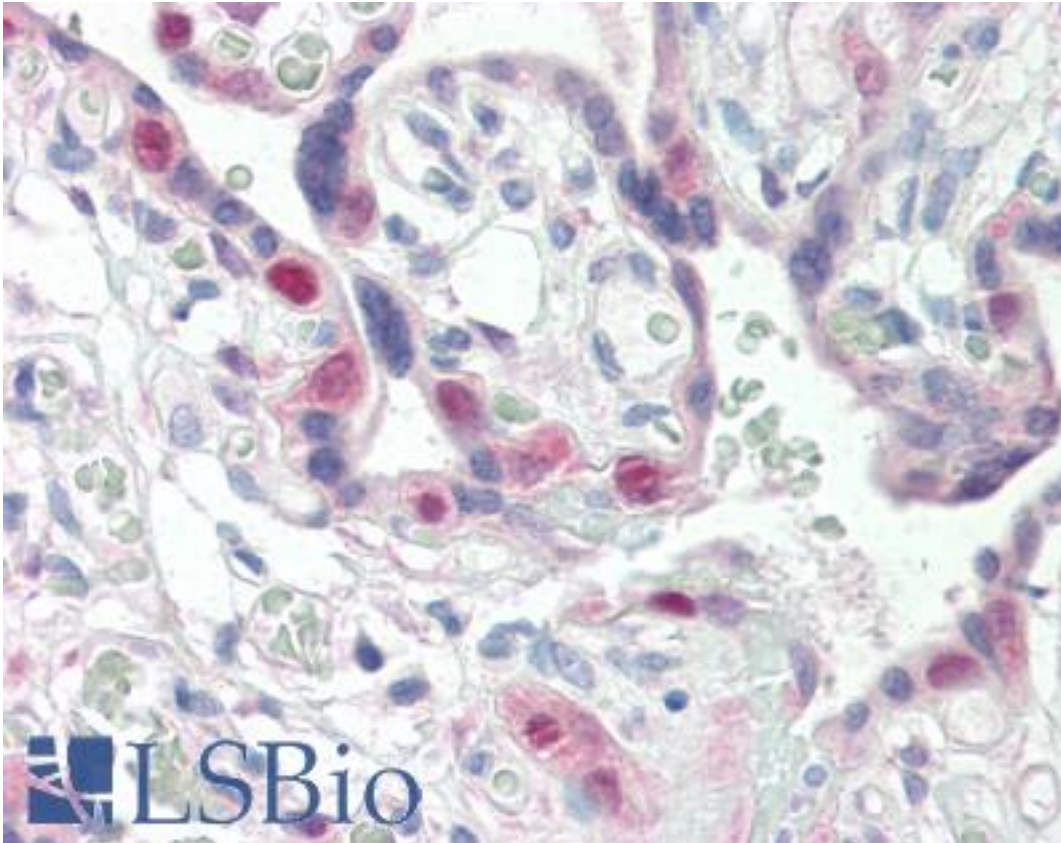


CDC2 / CDK2 Mouse anti-Human Monoclonal (AN4.3) Antibody - LS-B2483 - LSBio	
<b>CatalogID:</b>	LS-B2483
<b>Validation:</b>	This antibody replaces catalog number LS-C5978. It has been validated for use in the following assays: IHC-P.
<b>Target:</b>	cyclin-dependent kinase 2 (CDK2)
<b>Synonyms:</b>	CDK2 Antibody, CDC2 Antibody, Cell division kinase 2 Antibody, Cell division protein kinase 2 Antibody, CDC2-related protein kinase Antibody, Cell division kinase 2 Antibody, p33 protein kinase Antibody, p33(CDK2) Antibody, CDKN2 Antibody, Cyclin-dependent kinase 2 Antibody
<b>Family / Subfamily:</b>	Protein Kinase / CDC2/CDK
<b>Host</b>	CDK2 antibody was produced in Mouse
<b>Clonality:</b>	Monoclonal
<b>Isotype:</b>	IgG
<b>Clone Name:</b>	AN4.3
<b>Immunogen Species:</b>	CDC2 / CDK2 antibody was raised against Human
<b>Antigen Type:</b>	Recombinant protein
<b>Immunogen:</b>	CDC2 / CDK2 antibody was raised against recombinant human cdk2.
<b>Specificity:</b>	Recognizes human cdk2, MW 33kD. Does not cross-react with other cdks. Species cross-reactivity: mouse and Xenopus.
<b>Reactivity:</b>	Human, Mouse, Xenopus
<b>Purification:</b>	Protein G purified
<b>Presentation:</b>	0.1M Tris-glycine, pH 7.4, 0.15M sodium chloride, 0.05% sodium azide, before the addition of glycerol to 30%
<b>Recommended Storage:</b>	+4°C or -20°C, Avoid repeated freezing and thawing.
<b>Usage Summary:</b>	Immunohistochemistry: LS-B2483 was validated for use in immunohistochemistry on a panel of 21 formalin-fixed, paraffin-embedded (FFPE) human tissues after heat induced antigen retrieval in pH 6.0 citrate buffer. After incubation with the primary antibody, slides were incubated with biotinylated secondary antibody, followed by alkaline phosphatase-streptavidin and chromogen. The stained slides were evaluated by a pathologist to confirm staining specificity. The optimal working concentration for LS-B2483 was determined to be 5 ug/ml.
<b>Uses:</b>	IHC - Paraffin (5 µg/ml), Western blot, Immunoprecipitation, ELISA (Optimal dilution to be determined by the researcher)
<b>Size:</b>	50 µg
<b>Concentration:</b>	0.85 mg/ml

**Immunohistochemistry Image:**



Anti-CDK2 antibody IHC of human placenta. Immunohistochemistry of formalin-fixed, paraffin-embedded tissue after heat-induced antigen retrieval. Antibody LS-B2483 concentration 5 ug/ml.

**Requested From:**

Japan

Laboratory Reagent For In Vitro Research Use Only

Not for resale without prior written consent from LifeSpan BioSciences, Inc.

Created on 9/23/2014

© 2014 LifeSpan BioSciences