

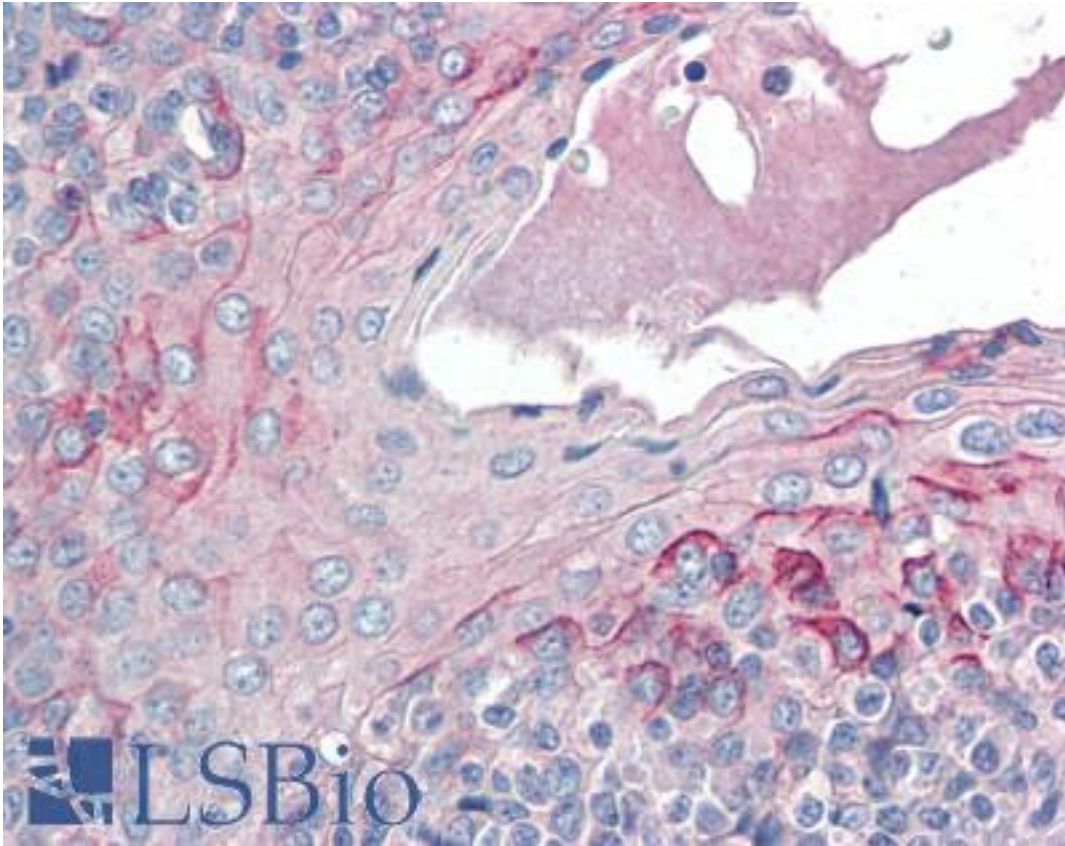
CCR6 Goat anti-Human Polyclonal (aa18-46) Antibody - LS-B2481 - LSBio

CatalogID:	LS-B2481
Validation:	This antibody replaces catalog number LS-C4360. It has been validated for use in the following assays: IHC-P.
Target:	chemokine (C-C motif) receptor 6 (CCR6)
Synonyms:	CCR6 Antibody, C-c chemokine receptor 6 Antibody, CD196 antigen Antibody, BN-1 Antibody, C-C chemokine receptor type 6 Antibody, C-C CKR-6 Antibody, Chemokine c-c motif receptor 6 Antibody, CKRL3 Antibody, CMKBR6 Antibody, Chemokine (C-C) receptor 6 Antibody, Chemokine receptor-like 3 Antibody, Cc chemokine receptor 6 Antibody, CC-CKR-6 Antibody, CCR-6 Antibody, DCR2 Antibody, DRY6 Antibody, G protein-coupled receptor 29 Antibody, DRY-6 Antibody, G-protein coupled receptor 29 Antibody, GPR29 Antibody, GPRCY4 Antibody, Strl-22 Antibody, STRL22 Antibody, CD196 Antibody, CKR-L3 Antibody, GPR-CY4 Antibody, LARC receptor Antibody
Family / Subfamily:	GPCR / Chemokine
Host	CCR6 antibody was produced in Goat
Clonality:	Polyclonal
Isotype:	IgG
Immunogen Species:	CCR6 antibody was raised against Human
Antigen Type:	Synthetic peptide
Immunogen:	CCR6 antibody was raised against synthetic peptide corresponding to aa 18-46 (Y18FVSVNTSYYSVDSEMLLCSLQEVQR46) of human CCR6 (C-C chemokine receptor 6). Peptide sequence is <50% identical to other human chemokine receptors in this region. Percent identity by BLAST analysis: Human, Gorilla, Gibbon (100%); Monkey (86%).
Specificity:	Recognizes human CCR6. Peptide sequence is <50% identical to other human chemokine receptors in this region. Species cross-reactivity: mouse.
Epitope:	aa18-46
Reactivity:	Human, Gorilla, Gibbon
Purification:	Immunoaffinity purified
Presentation:	PBS, 1 mg/ml BSA, 0.1% sodium azide.
Recommended Storage:	Long term: -20°C; Short term: +4°C. Avoid repeat freeze-thaw cycles.
Usage Summary:	Immunohistochemistry: LS-B2481 was validated for use in immunohistochemistry on a panel of 21 formalin-fixed, paraffin-embedded (FFPE) human tissues after heat induced antigen retrieval in pH 6.0 citrate buffer. After incubation with the primary antibody, slides were incubated with biotinylated secondary antibody, followed by alkaline phosphatase-streptavidin and chromogen. The stained slides were evaluated by a pathologist to confirm staining specificity. The optimal working concentration for LS-B2481 was determined to be 5 ug/ml. ELISA: 1:75000. Flow Cytometry: 50-100ul, 1-3 ul per 10 ⁶ cells.
Uses:	IHC - Paraffin (5 µg/ml), ICC (1:300), Flow Cytometry (1 - 3 µg/10E6 cells), ELISA (1:75000) (Optimal dilution to be determined by the researcher)
Size:	50 µg

Concentration:

1 mg/ml

Immunohistochemistry Image:



Anti-CCR6 antibody IHC of human tonsil. Immunohistochemistry of formalin-fixed, paraffin-embedded tissue after heat-induced antigen retrieval. Antibody LS-B2481 concentration 5 ug/ml.

Requested From:

Japan

Laboratory Reagent For In Vitro Research Use Only

Not for resale without prior written consent from LifeSpan BioSciences, Inc.

Created on 9/23/2014

© 2014 LifeSpan BioSciences