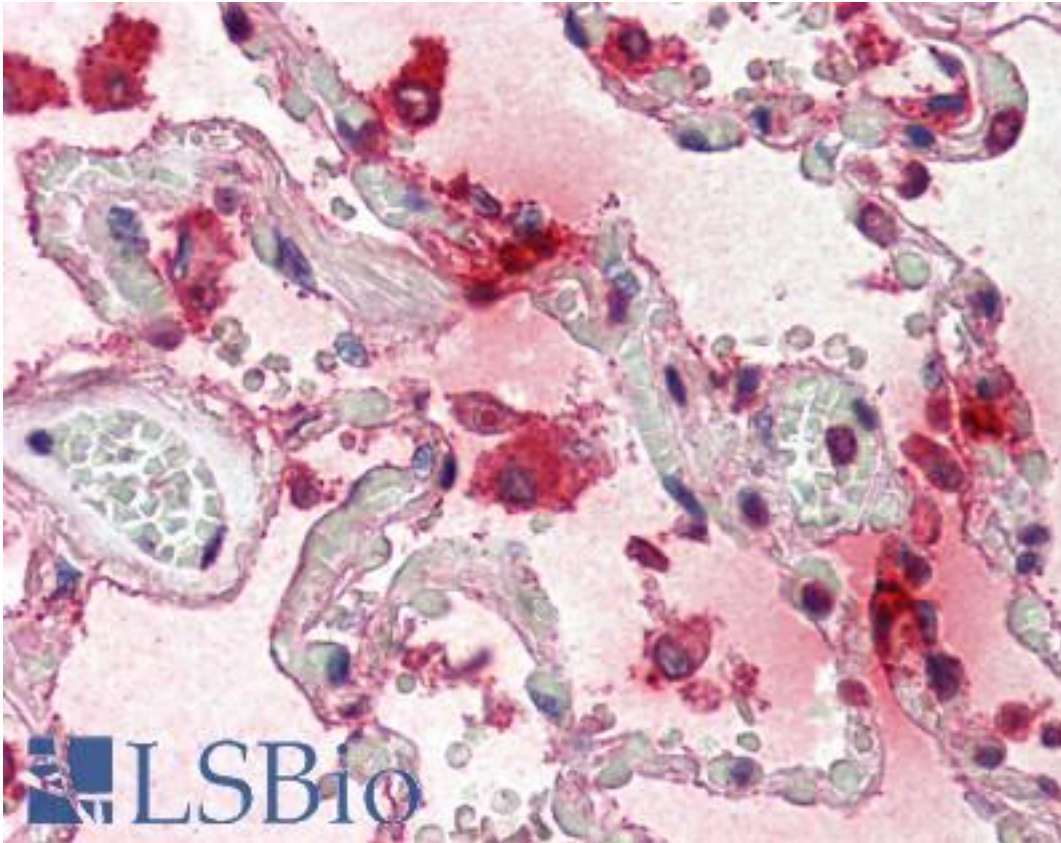


TPSAB1 / Mast Cell Tryptase Mouse anti-Human Monoclonal Antibody - LS-B2478 - LSBio	
<b>CatalogID:</b>	LS-B2478
<b>Validation:</b>	This antibody replaces catalog number LS-C25456. It has been validated for use in the following assays: IHC-P.
<b>Target:</b>	Tryptase alpha/beta 1 (TPSAB1)
<b>Synonyms:</b>	TPSAB1 Antibody, Alpha tryptase Antibody, Mast cell alpha II tryptase Antibody, Tryptase alpha-1 Antibody, Tryptase beta I Antibody, Tryptase-III Antibody, TPSB1 Antibody, Tryptase alpha II Antibody, TPS1 Antibody, TPS2 Antibody, Tryptase beta-1 Antibody, Tryptase-1 Antibody, Tryptase-I Antibody, Mast cell beta I tryptase Antibody, Tryptase alpha/beta 1 Antibody, Tryptase alpha/beta-1 Antibody, Tryptase beta 1 Antibody, Tryptase I Antibody
<b>Family / Subfamily:</b>	Protease / Serine S1
<b>Host</b>	TPSAB1 antibody was produced in Mouse
<b>Clonality:</b>	Monoclonal
<b>Isotype:</b>	IgG1
<b>Immunogen Species:</b>	TPSAB1 / Mast Cell Tryptase antibody was raised against Human
<b>Antigen Type:</b>	Purified protein
<b>Immunogen:</b>	TPSAB1 / Mast Cell Tryptase antibody was raised against human mast cell tryptase purified from human lung tissue.
<b>Specificity:</b>	Recognizes human mast cell tryptase, both alpha and beta isoforms. The antibody is an excellent marker for mast cells and does not bind to any other cell type in Immunohistochemistry. Species cross-reactivity: feline, canine and monkey.
<b>Reactivity:</b>	Human, Monkey, Cat, Dog
<b>Purification:</b>	Protein G purified
<b>Presentation:</b>	PBS, 0.09% sodium azide
<b>Recommended Storage:</b>	Long term: -20°C; Short term: +4°C. Avoid repeat freeze-thaw cycles.
<b>Usage Summary:</b>	Immunohistochemistry: LS-B2478 was validated for use in immunohistochemistry on a panel of 21 formalin-fixed, paraffin-embedded (FFPE) human tissues after heat induced antigen retrieval in pH 6.0 citrate buffer. After incubation with the primary antibody, slides were incubated with biotinylated secondary antibody, followed by alkaline phosphatase-streptavidin and chromogen. The stained slides were evaluated by a pathologist to confirm staining specificity. The optimal working concentration for LS-B2478 was determined to be 5 ug/ml. Positive control: Tonsil.
<b>Uses:</b>	IHC - Paraffin (5 µg/ml), IHC - Frozen, Western blot, ELISA (Optimal dilution to be determined by the researcher)
<b>Size:</b>	50 µg
<b>Concentration:</b>	1 mg/ml

**Immunohistochemistry Image:**



Anti-TPSAB1 / Mast Cell Tryptase antibody IHC of human lung. Immunohistochemistry of formalin-fixed, paraffin-embedded tissue after heat-induced antigen retrieval. Antibody LS-B2478 concentration 5 ug/ml.

**Requested From:**

Japan

Laboratory Reagent For In Vitro Research Use Only

Not for resale without prior written consent from LifeSpan BioSciences, Inc.

Created on 9/23/2014

© 2014 LifeSpan BioSciences